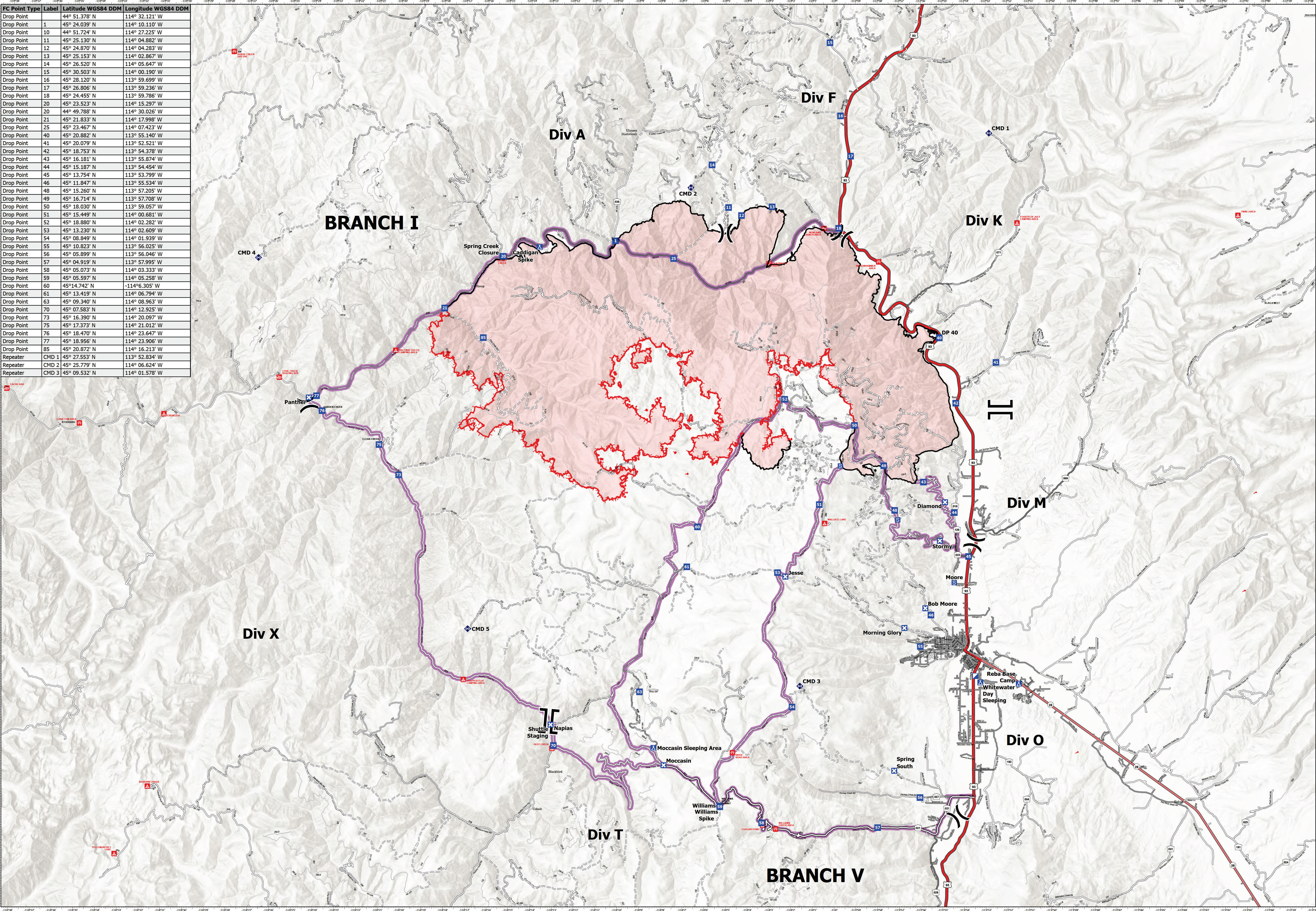


FC Point Type	Label	Latitude WGS84 DDM	Longitude WGS84 DDM
Drop Point		44° 51.378' N	114° 32.121' W
Drop Point	1	45° 24.039' N	114° 10.110' W
Drop Point	10	44° 51.724' N	114° 27.225' W
Drop Point	11	45° 25.130' N	114° 04.882' W
Drop Point	12	45° 24.870' N	114° 04.283' W
Drop Point	13	45° 25.153' N	114° 02.867' W
Drop Point	14	45° 26.520' N	114° 05.647' W
Drop Point	15	45° 30.503' N	114° 00.190' W
Drop Point	16	45° 28.120' N	113° 59.699' W
Drop Point	17	45° 26.806' N	113° 59.236' W
Drop Point	18	45° 24.455' N	113° 59.786' W
Drop Point	20	45° 23.523' N	114° 15.297' W
Drop Point	20	44° 49.788' N	114° 30.026' W
Drop Point	21	45° 21.833' N	114° 17.998' W
Drop Point	25	45° 23.467' N	114° 07.423' W
Drop Point	40	45° 20.882' N	113° 55.140' W
Drop Point	41	45° 20.079' N	113° 52.521' W
Drop Point	42	45° 18.753' N	113° 54.378' W
Drop Point	43	45° 16.181' N	113° 55.874' W
Drop Point	44	45° 15.187' N	113° 54.454' W
Drop Point	45	45° 13.754' N	113° 53.799' W
Drop Point	46	45° 11.847' N	113° 55.534' W
Drop Point	48	45° 15.260' N	113° 57.205' W
Drop Point	49	45° 16.714' N	113° 57.708' W
Drop Point	50	45° 18.030' N	113° 59.057' W
Drop Point	51	45° 15.449' N	114° 00.681' W
Drop Point	52	45° 18.880' N	114° 02.282' W
Drop Point	53	45° 13.230' N	114° 02.609' W
Drop Point	54	45° 08.849' N	114° 01.939' W
Drop Point	55	45° 10.823' N	113° 56.025' W
Drop Point	56	45° 05.899' N	113° 56.046' W
Drop Point	57	45° 04.919' N	113° 57.995' W
Drop Point	58	45° 05.073' N	114° 03.333' W
Drop Point	59	45° 05.597' N	114° 05.258' W
Drop Point	60	45° 14.742' N	-114° 6.305' W
Drop Point	61	45° 13.419' N	114° 06.794' W
Drop Point	63	45° 09.340' N	114° 08.963' W
Drop Point	70	45° 07.583' N	114° 12.925' W
Drop Point	73	45° 16.390' N	114° 20.097' W
Drop Point	75	45° 17.373' N	114° 21.012' W
Drop Point	76	45° 18.470' N	114° 23.647' W
Drop Point	77	45° 18.956' N	114° 23.906' W
Drop Point	85	45° 20.872' N	114° 16.213' W
Repeater	CMD 1	45° 27.553' N	113° 52.834' W
Repeater	CMD 2	45° 25.779' N	114° 06.624' W
Repeater	CMD 3	45° 09.532' N	114° 01.578' W



**Transportation**  
 Moose ID-SCF-022105  
 78,729 acres  
 08/16/2022

- ✂ Division Break
- || Branch Break
- Incident Command Post
- ◆ Drop Point
- ⊠ Closure
- Camp
- Staging Area
- ◆ Repeater
- Access or Improved Road
- Contained
- Uncontained
- Paved Road
- Gravel Road
- Dirt Roads
- Unimproved Roads
- Closed Roads
- Primary Highway
- Secondary Highway
- Paved Roads
- Dirt (Not Paved)
- Minor Roads
- Main Access Routes

