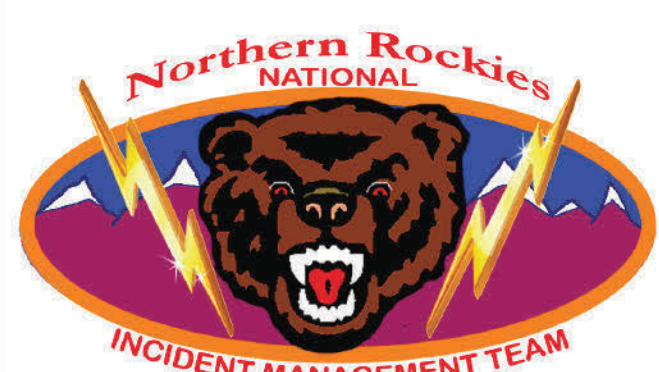


Division M
Moose ID-SCF-022105
80,096 Acres
8/17/2022

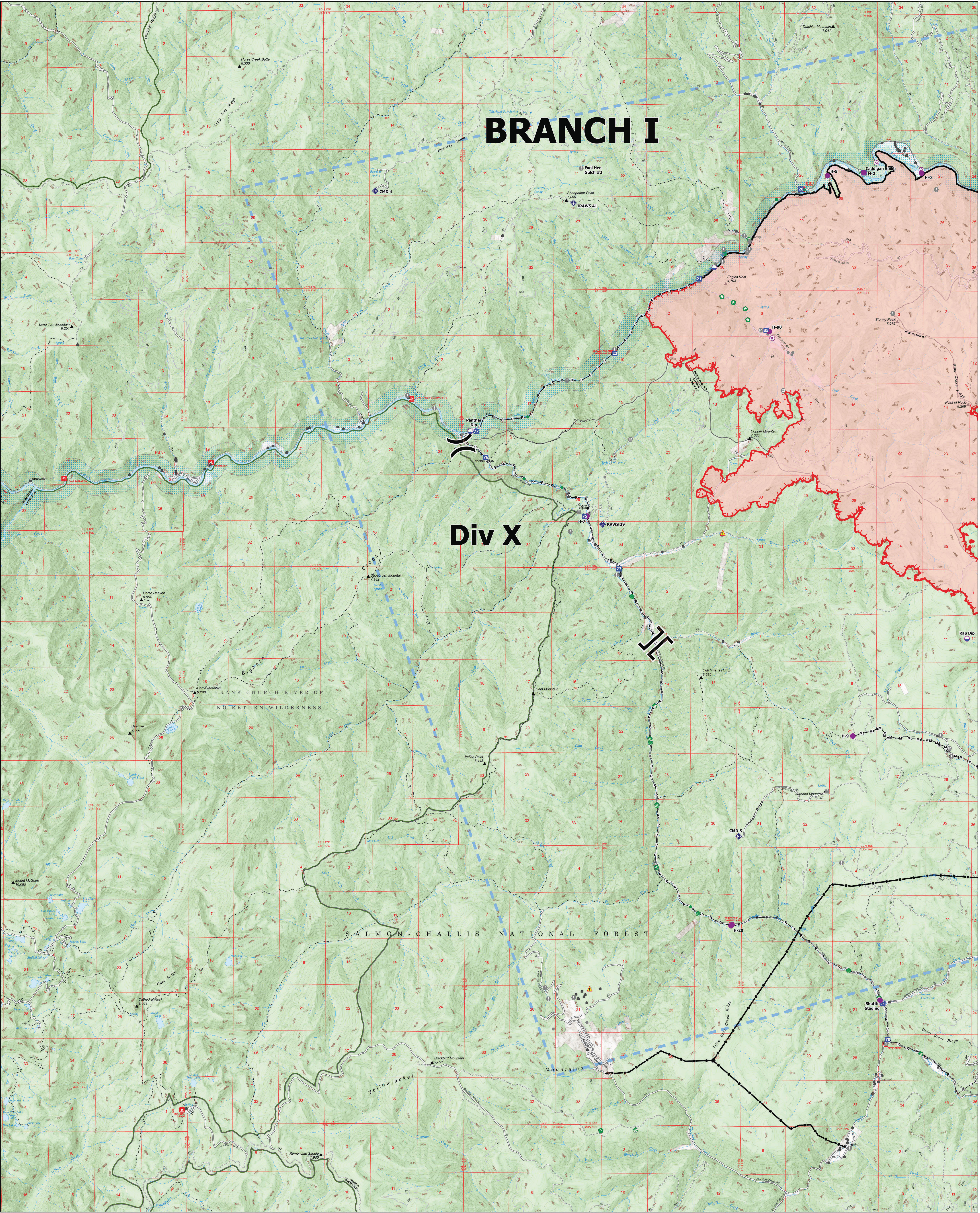


- | | | | | | | | | |
|-------------------------|------------------|-----------------------------------|---------------------|-------------------------------------|--------------------------------|-------------------------------|-----------------------------------|---------------------------|
| Air Operations | Logistics | Other | Repair Point | Water | R- | Completed Road as Line | Paved Roads | State Public Lands |
| ● Dip Site | ■ Drop Point | ● Bridge | ● Dozer Push | ● Water Source | — Completed Road as Line | — Paved Roads | — State Public Lands | |
| ● Mobile Retardant Base | ■ Camp | ● Repair | ● Clean Up Area | ⊗ Completed Dozer Line | — Temporary Flight Restriction | — Dirt (Not Paved) | — Other State Lands | |
| ● Helipad | ■ Staging Area | ● Water Development or Draft Site | ● Safety | — Completed Hand Line | — Contained | — Trail | — Bureau of Land Management Lands | |
| ■ Assignment Breaks | ■ Reference | ● Retardant in Avoidance Area | ● Hazard | — Completed Mixed Construction Line | — Administrative FS Boundary | — Forest Service Land | | |
| ■ Branch Break | ● Value at Risk | | | | | | | |



BRANCH I

Div X



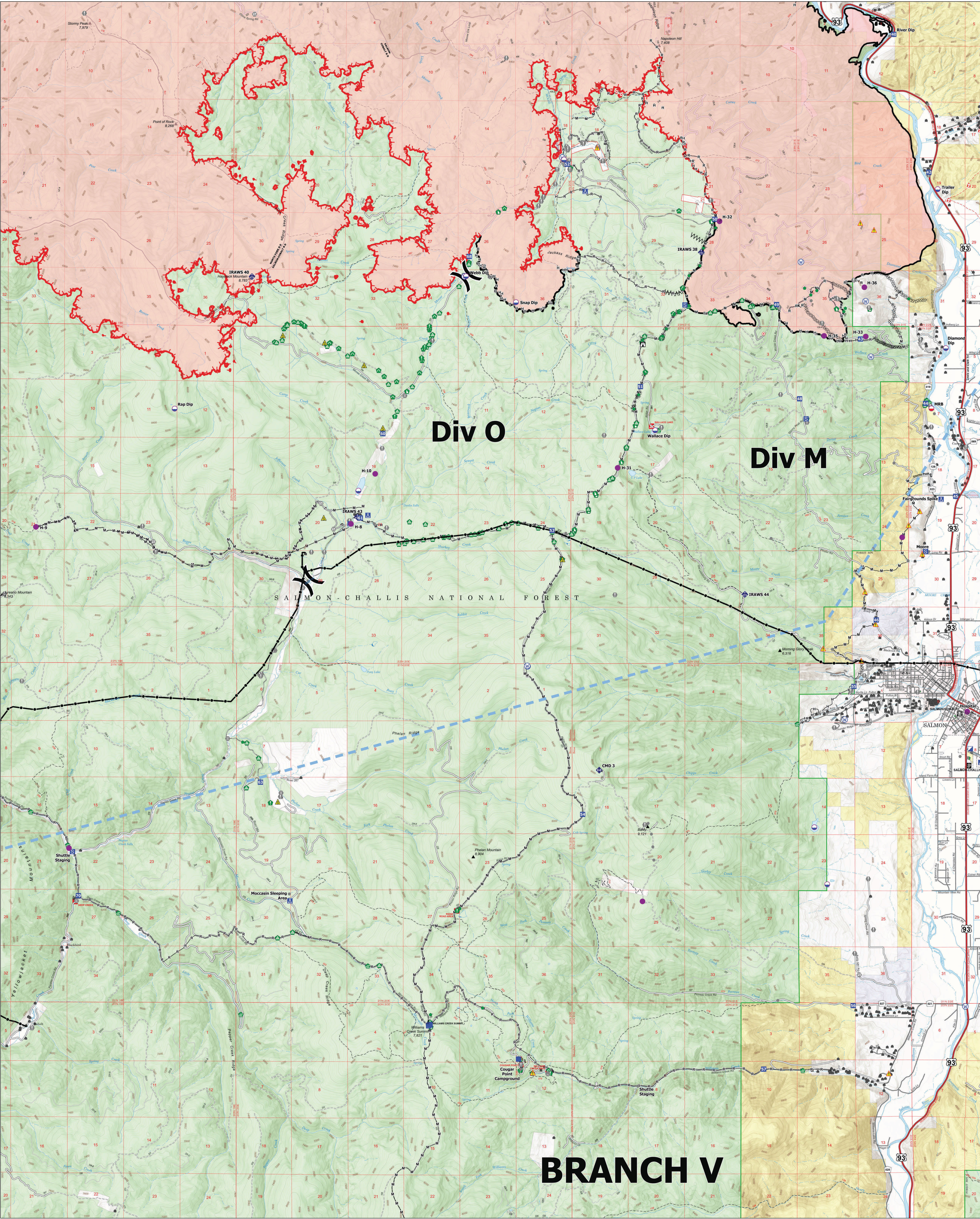
Division M
 Moose ID-SCF-022105
 80,096 Acres
 8/17/2022



- | | | | | | |
|--|--|--|--|--|--|
| Air Operations
Aerial Hazard
Airstrip or Airport
Dip Site
Helipod | Assignment Breaks
Division Break
Branch Break
Logistics
Drop Point
Camp | Reference
Value at Risk
Other
Landmark
Gate | Bridge
Culvert
Clean Up Area
Repair
Water Development or Draft Site
Structure Wrap
Repair Point
Hazard Tree | Communications
Mobile Weather Unit
Repeater | Safety
Hazard
Idaho Power Transmission Overhead (Lines)
Completed Hand Line
Completed Mixed Construction Line |
|--|--|--|--|--|--|

- | | |
|--|---|
| Completed Road as Line
Temporary Flight Restriction
Contained
Uncontained
Structures
Dirt (Not Paved) | Administrative FS
Federal Wilderness Boundary
Wild and Scenic River
Forest Service Land
Other State Lands |
|--|---|





Div O

Div M

BRANCH V

SALMON-CHALLIS NATIONAL FOREST

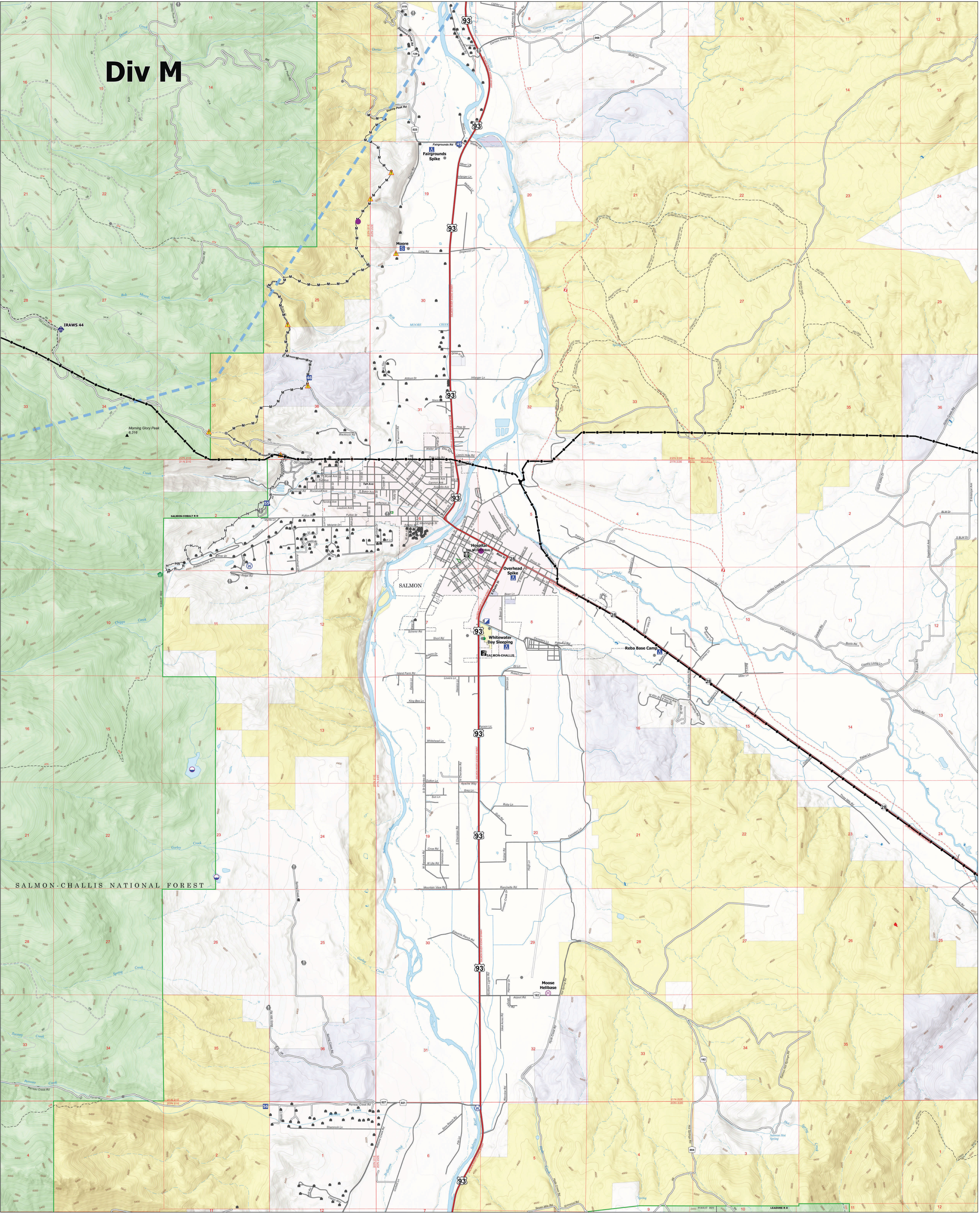
SALMON

Division M
 Moose ID-SCF-022105
 80,096 Acres
 8/17/2022



Air Operations Aerial Hazard Dip Site Mobile Retardant Base Helispot Assignment Breaks Division Break	Logistics Incident Command Post Drop Point Camp Staging Area Operations Lookout	Fire Hot Spot - Spot Fire Reference Value at Risk Other Gate Bridge	Repair Water Development or Draft Site Stream Crossing Road Repair Retardant in Avoidance Area Resource Location	Repair Point Landing or Log Deck Dozer Push Culvert Clean Up Area Communications Mobile Weather Unit	Repeater Safety Safety Zone Hazard Water Water Source	Idaho Power Transmission Overhead (Lines) Completed Dozer Line Completed Fuel Break Completed Hand Line Completed Mixed Construction Line R - Completed Road as Line Access or Improved Road Temporary Flight Restriction Contained Uncontained Structures	<p>0 0.5 1 Miles</p> <p>8/16/2022 1959</p> <p>North American 1983 Datum, Lat/Long Grid</p>
---	---	---	--	---	--	---	--

Div M



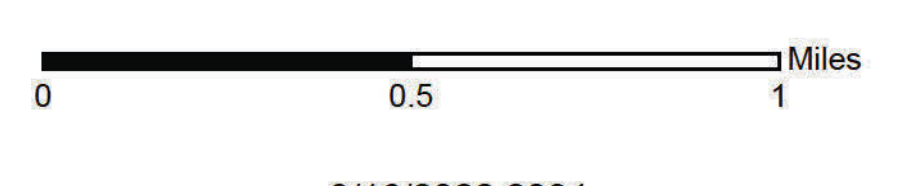
SALMON-CHALLIS NATIONAL FOREST

Division M
 Moose ID-SCF-022105
 80,096 Acres
 8/17/2022



- | | | | |
|---|---|---|---|
| <ul style="list-style-type: none"> Gate Repair Water Development or Draft Site Repair Point Clean Up Area | <ul style="list-style-type: none"> Drop Point Camp Staging Area Reference Value at Risk Other | <ul style="list-style-type: none"> Safety Hazard Water Source | <ul style="list-style-type: none"> Mobile Weather Unit Completed Dozer Line Completed Hand Line Completed Mixed Construction Line |
|---|---|---|---|

- | | | | |
|--|--|---|--|
| <ul style="list-style-type: none"> Staho Power Transmission Overhead (Lines) Completed Road Completed Dozer Line Completed Hand Line Completed Mixed Construction Line | <ul style="list-style-type: none"> Access or Improved Road Temporary Flight Restriction Uncontained Structures | <ul style="list-style-type: none"> Primary Highway Secondary Highway Paved Roads Dirt (Not Paved) Trail | <ul style="list-style-type: none"> Administrative FS Boundary Forest Service Land State Public Lands Other State Lands Bureau of Land Management Lands |
|--|--|---|--|



8/16/2022 2004
 North American 1983 Datum, Lat/Long Grid

