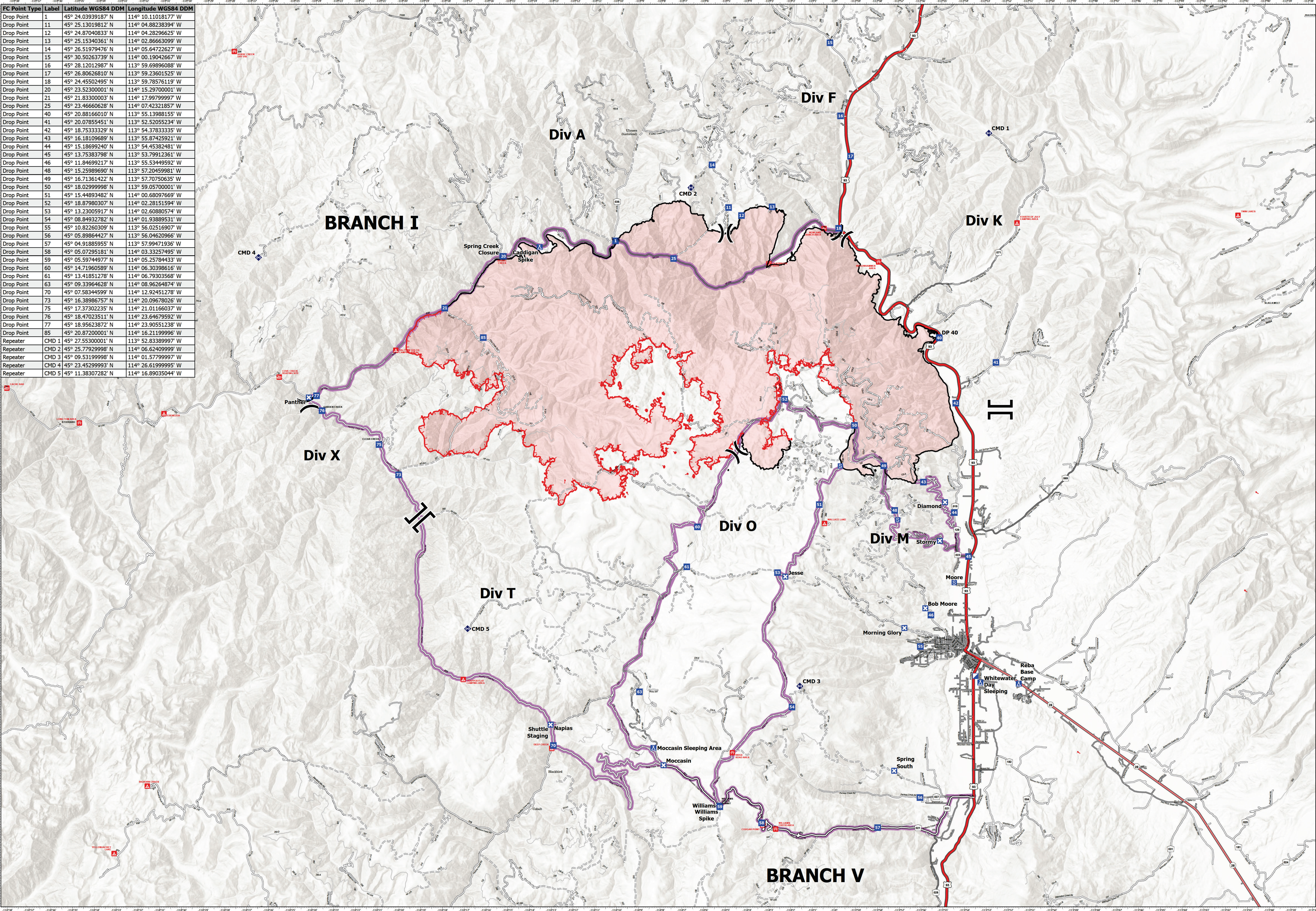


FC Point Type	Label	Latitude WGS84 DDM	Longitude WGS84 DDM
Drop Point	1	45° 24.03939187' N	114° 10.11018177' W
Drop Point	11	45° 25.13019812' N	114° 04.88238394' W
Drop Point	12	45° 24.87040833' N	114° 04.28296625' W
Drop Point	13	45° 25.15340361' N	114° 02.86663099' W
Drop Point	14	45° 26.51979476' N	114° 05.64722627' W
Drop Point	15	45° 30.50263739' N	114° 00.19042667' W
Drop Point	16	45° 28.12012987' N	113° 59.69896088' W
Drop Point	17	45° 26.80626810' N	113° 59.23601525' W
Drop Point	18	45° 24.45502495' N	113° 59.78576119' W
Drop Point	20	45° 23.52300001' N	114° 15.29700001' W
Drop Point	21	45° 21.83300003' N	114° 17.99799997' W
Drop Point	25	45° 23.46660628' N	114° 07.42321857' W
Drop Point	40	45° 20.88166010' N	113° 55.13988155' W
Drop Point	41	45° 20.07855451' N	113° 52.52052324' W
Drop Point	42	45° 18.75333329' N	113° 54.37833335' W
Drop Point	43	45° 16.18109689' N	113° 55.87425921' W
Drop Point	44	45° 15.18699240' N	113° 54.45382481' W
Drop Point	45	45° 13.75383798' N	113° 53.79912361' W
Drop Point	46	45° 11.84699217' N	113° 55.53449592' W
Drop Point	48	45° 15.25989690' N	113° 57.20459981' W
Drop Point	49	45° 16.71361422' N	113° 57.70750635' W
Drop Point	50	45° 18.02999998' N	113° 59.05700001' W
Drop Point	51	45° 15.44893482' N	114° 00.68097669' W
Drop Point	52	45° 18.87980307' N	114° 02.28151594' W
Drop Point	53	45° 13.23005917' N	114° 02.60880574' W
Drop Point	54	45° 08.84932782' N	114° 01.93889531' W
Drop Point	55	45° 10.82260309' N	113° 56.02516907' W
Drop Point	56	45° 05.89864427' N	113° 56.04620966' W
Drop Point	57	45° 04.91885955' N	113° 57.99471936' W
Drop Point	58	45° 05.07295181' N	114° 03.32574955' W
Drop Point	59	45° 05.59744977' N	114° 05.25784433' W
Drop Point	60	45° 14.71960589' N	114° 06.30398616' W
Drop Point	61	45° 13.41851278' N	114° 06.79303568' W
Drop Point	63	45° 09.33964628' N	114° 08.96264874' W
Drop Point	70	45° 07.58344599' N	114° 12.92451278' W
Drop Point	73	45° 16.38986757' N	114° 20.09678026' W
Drop Point	75	45° 17.3702235' N	114° 21.01166037' W
Drop Point	76	45° 18.47023511' N	114° 23.64679592' W
Drop Point	77	45° 18.95623872' N	114° 23.90551238' W
Drop Point	85	45° 20.87200001' N	114° 16.21199996' W
Repeater	CMD 1	45° 27.55300001' N	113° 52.83389997' W
Repeater	CMD 2	45° 25.77929998' N	114° 06.62409999' W
Repeater	CMD 3	45° 09.53199998' N	114° 01.57799997' W
Repeater	CMD 4	45° 23.45299993' N	114° 26.61999995' W
Repeater	CMD 5	45° 11.38307282' N	114° 16.89035044' W



Transportation
 Moose ID-SCF-022105
 82,974 acres
 08/18/2022

- ✂ Division Break
- || Branch Break
- Incident Command Post
- ◆ Drop Point
- ⊠ Closure
- Ⓜ Camp
- Ⓜ Staging Area
- ◆ Repeater
- ◆ Access or Improved Road
- Contained
- Uncontained
- Paved Road
- Gravel Road
- Dirt Roads
- Unimproved Roads
- Closed Roads
- Primary Highway
- Secondary Highway
- Paved Roads
- Dirt (Not Paved)
- Minor Roads
- Main Access Routes

