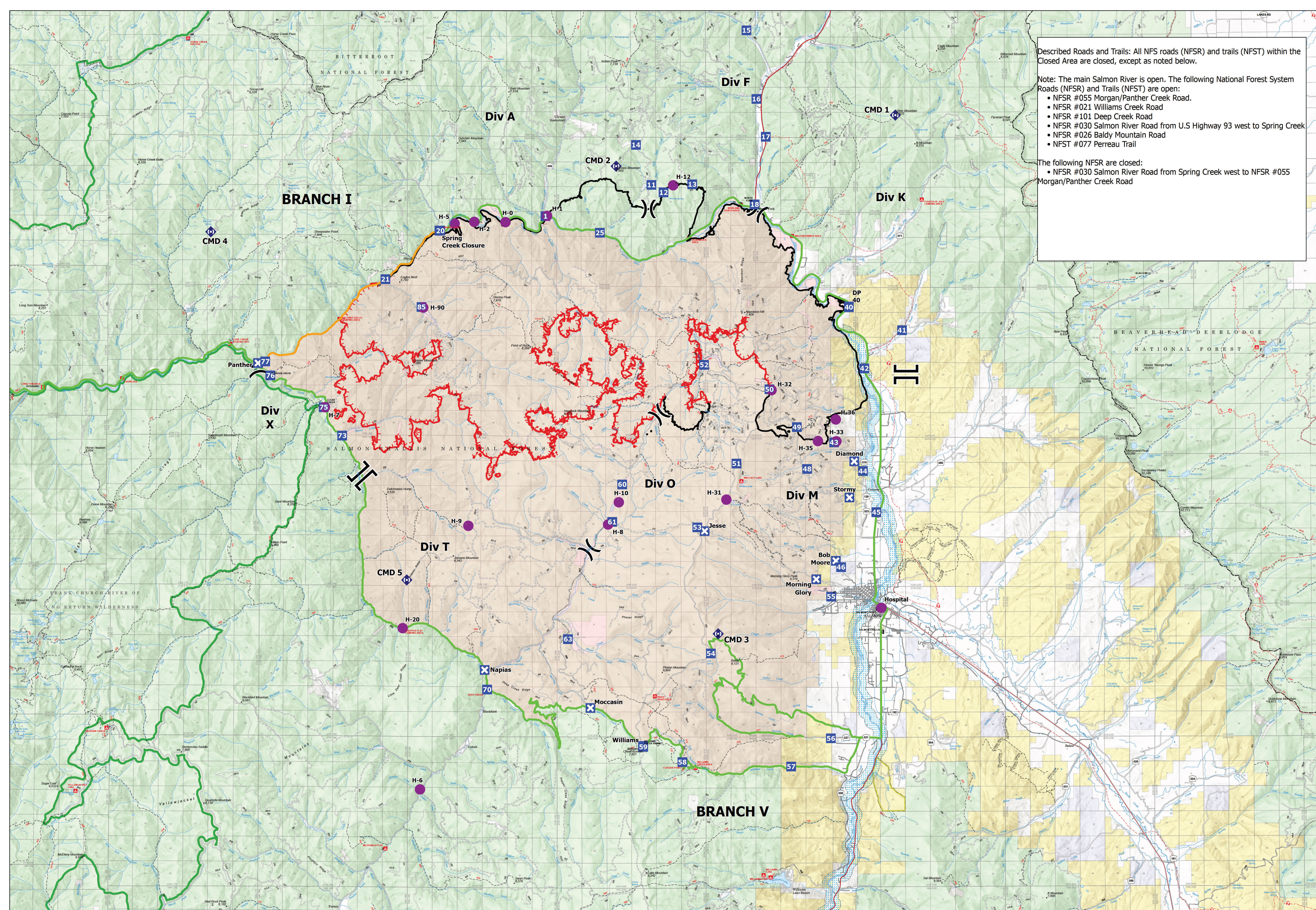


Described Roads and Trails: All NFS roads (NFSR) and trails (NFST) within the Closed Area are closed, except as noted below.

- Note: The main Salmon River is open. The following National Forest System Roads (NFSR) and Trails (NFST) are open:
- NFSR #055 Morgan/Panther Creek Road.
 - NFSR #021 Williams Creek Road
 - NFSR #101 Deep Creek Road
 - NFSR #030 Salmon River Road from U.S Highway 93 west to Spring Creek
 - NFSR #026 Baldy Mountain Road
 - NFST #077 Perreau Trail

- The following NFSR are closed:
- NFSR #030 Salmon River Road from Spring Creek west to NFSR #055 Morgan/Panther Creek Road



Security Moose
 ID-SCF-022105
 89,344 Acres
 08/20/2022

- Helispot
-) Division Break
- || Branch Break
- Drop Point
- ⊠ Road Block Staffed
- ⬢ Repeater
- Closed Route
- Open Route
- Contained
- Uncontained
- FS Wilderness Boundary
- Closure Area

