

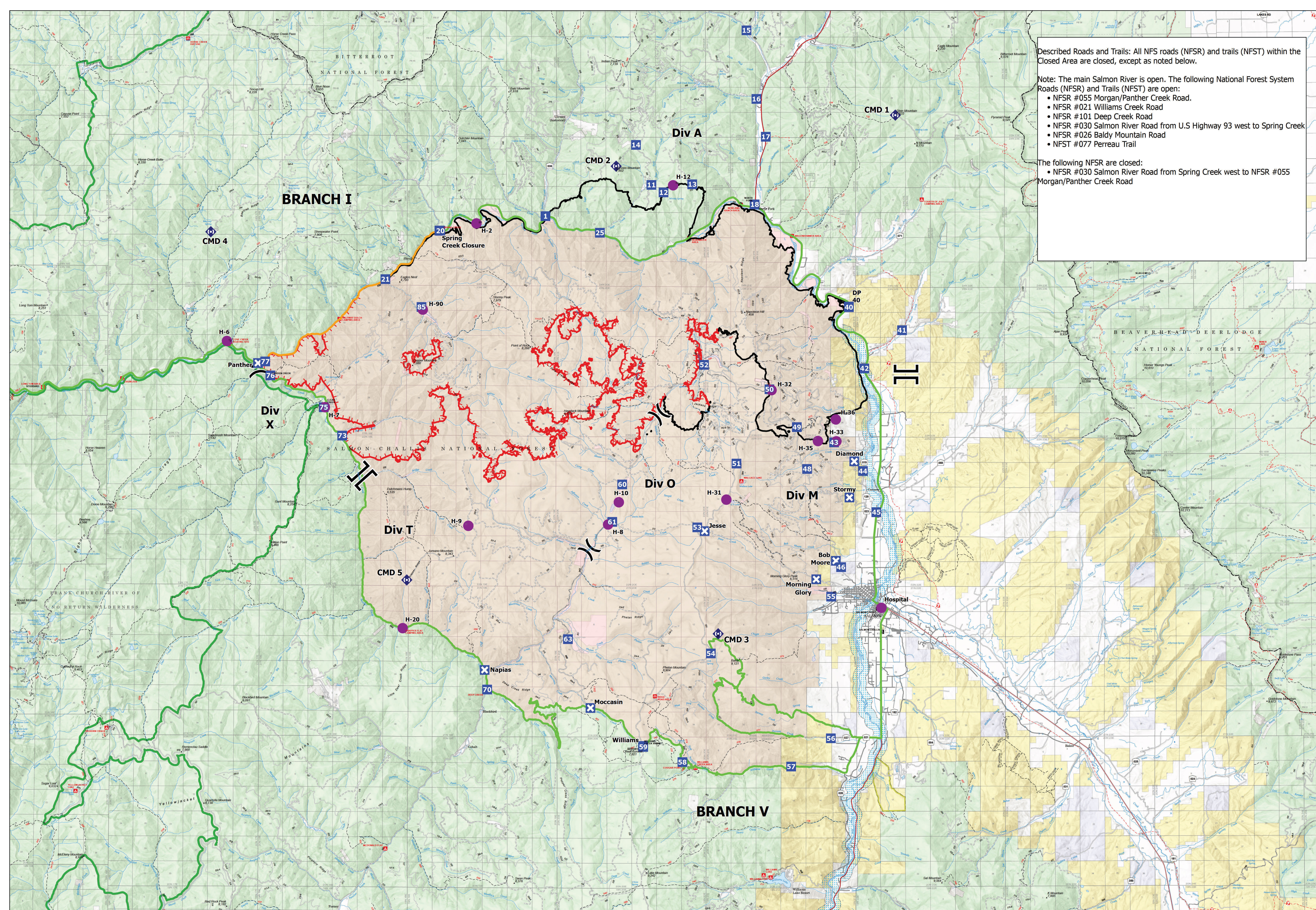
Described Roads and Trails: All NFS roads (NFSR) and trails (NFST) within the Closed Area are closed, except as noted below.

Note: The main Salmon River is open. The following National Forest System Roads (NFSR) and Trails (NFST) are open:

- NFSR #055 Morgan/Panther Creek Road.
- NFSR #021 Williams Creek Road
- NFSR #101 Deep Creek Road
- NFSR #030 Salmon River Road from U.S Highway 93 west to Spring Creek
- NFSR #026 Baldy Mountain Road
- NFST #077 Perreau Trail

The following NFSR are closed:

- NFSR #030 Salmon River Road from Spring Creek west to NFSR #055 Morgan/Panther Creek Road



Security Moose
 ID-SCF-022105
 96,445 Acres
 08/25/2022

- Helispot
-) Division Break
- ⊥ Branch Break
- Drop Point
- ⊠ Road Block Staffed
- ⚡ Repeater
- Closed Route
- Open Route
- Contained
- Uncontained
- FS Wilderness Boundary
- Closure Area

