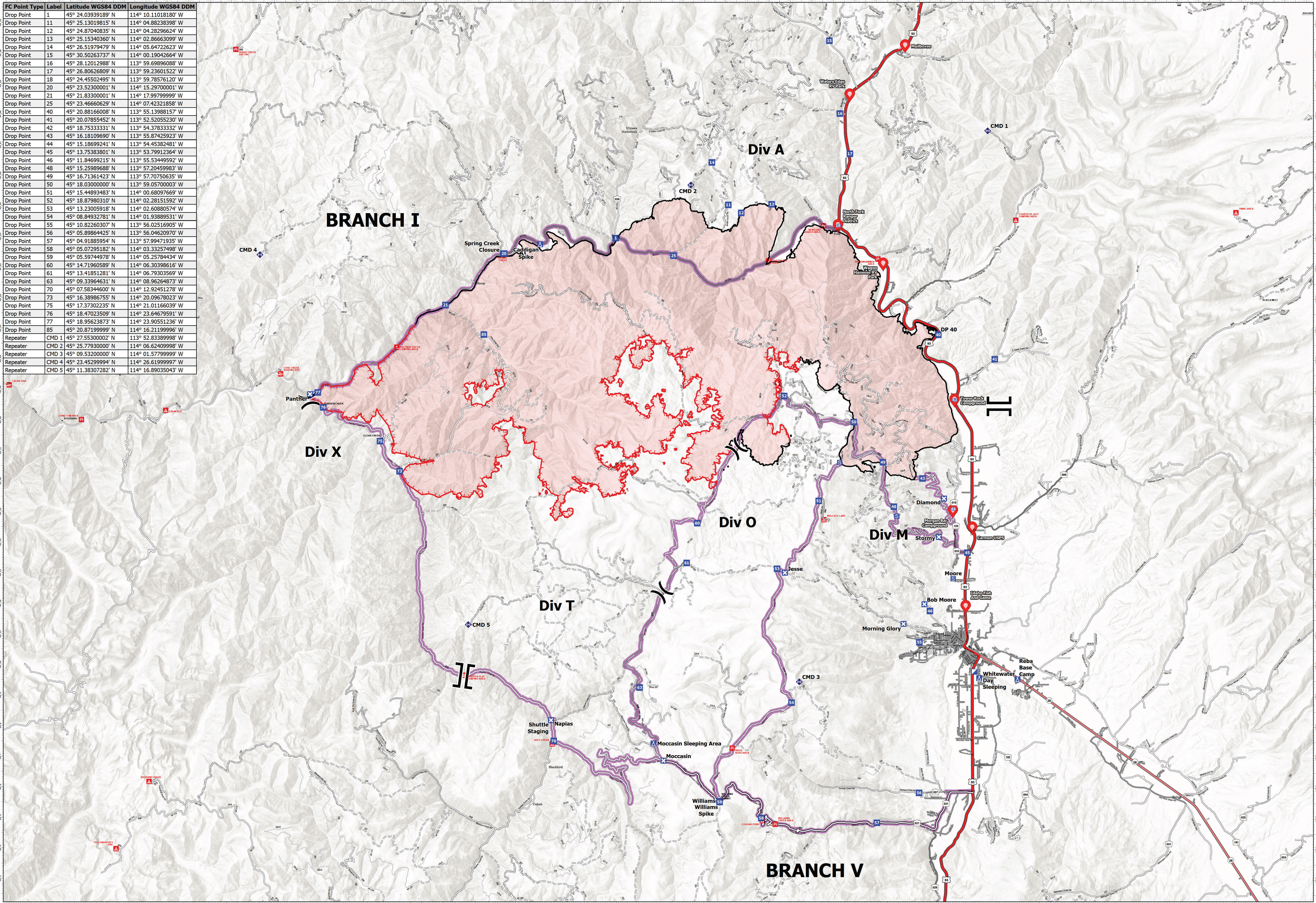


FC Point Type	Label	Latitude WGS84 DDM	Longitude WGS84 DDM
Drop Point	1	45° 24.03939189' N	114° 10.11018180' W
Drop Point	11	45° 25.13019815' N	114° 04.88238398' W
Drop Point	12	45° 24.87040835' N	114° 04.28296624' W
Drop Point	13	45° 25.15340360' N	114° 02.86663099' W
Drop Point	14	45° 26.51979479' N	114° 05.64722623' W
Drop Point	15	45° 30.50263737' N	114° 00.19042664' W
Drop Point	16	45° 28.12012988' N	113° 59.69896088' W
Drop Point	17	45° 26.80626809' N	113° 59.23601522' W
Drop Point	18	45° 24.45502495' N	113° 59.78576120' W
Drop Point	20	45° 23.52300001' N	114° 15.29700001' W
Drop Point	21	45° 21.83300001' N	114° 17.99799999' W
Drop Point	25	45° 23.46660629' N	114° 07.42321858' W
Drop Point	40	45° 20.88166008' N	113° 55.13988157' W
Drop Point	41	45° 20.07855452' N	113° 52.5205230' W
Drop Point	42	45° 18.75333331' N	113° 54.37833332' W
Drop Point	43	45° 16.18109690' N	113° 55.87425923' W
Drop Point	44	45° 15.18699241' N	113° 54.45382481' W
Drop Point	45	45° 13.75383801' N	113° 53.79912364' W
Drop Point	46	45° 11.84699215' N	113° 55.53449592' W
Drop Point	48	45° 15.25989688' N	113° 57.20459983' W
Drop Point	49	45° 16.71361423' N	113° 57.70750635' W
Drop Point	50	45° 18.03000000' N	113° 59.05700003' W
Drop Point	51	45° 15.44893483' N	114° 00.68097669' W
Drop Point	52	45° 18.87980310' N	114° 02.28151592' W
Drop Point	53	45° 13.23005918' N	114° 02.60880574' W
Drop Point	54	45° 08.84932781' N	114° 01.93889531' W
Drop Point	55	45° 10.82260307' N	113° 56.02516905' W
Drop Point	56	45° 05.89864425' N	113° 56.04620970' W
Drop Point	57	45° 04.91885954' N	113° 57.99471935' W
Drop Point	58	45° 05.07295182' N	114° 03.33257498' W
Drop Point	59	45° 05.59744978' N	114° 05.25784434' W
Drop Point	60	45° 14.71960589' N	114° 06.30398616' W
Drop Point	61	45° 13.41851281' N	114° 06.79303569' W
Drop Point	63	45° 09.33964631' N	114° 08.96264873' W
Drop Point	70	45° 07.58344600' N	114° 12.92451278' W
Drop Point	73	45° 16.38986755' N	114° 20.09678023' W
Drop Point	75	45° 17.3702235' N	114° 21.01166039' W
Drop Point	76	45° 18.47023509' N	114° 23.64679591' W
Drop Point	77	45° 18.95623873' N	114° 23.90551236' W
Drop Point	85	45° 20.87199999' N	114° 16.21199996' W
Repeater	CMD 1	45° 27.55300002' N	113° 52.83389998' W
Repeater	CMD 2	45° 25.77930000' N	114° 06.62409998' W
Repeater	CMD 3	45° 09.53200000' N	114° 01.57799999' W
Repeater	CMD 4	45° 23.45299994' N	114° 26.61999997' W
Repeater	CMD 5	45° 11.38307282' N	114° 16.89035043' W



Transportation
 Moose ID-SCF-022105
 96,445 acres
 08/25/2022

- ✕ Division Break
- ⌌ Branch Break
- 📍 Incident Command Post
- 📍 Drop Point
- 🚫 Closure
- 📍 Camp
- 📍 Staging Area
- 📍 Repeater
- ➡ Access or Improved Road
- Contained
- 🚫 Uncontained
- Paved Road
- Gravel Road
- Dirt Roads
- Unimproved Roads
- Closed Roads
- Primary Highway
- Secondary Highway
- Paved Roads
- Dirt (Not Paved)
- Minor Roads
- Main Access Routes

