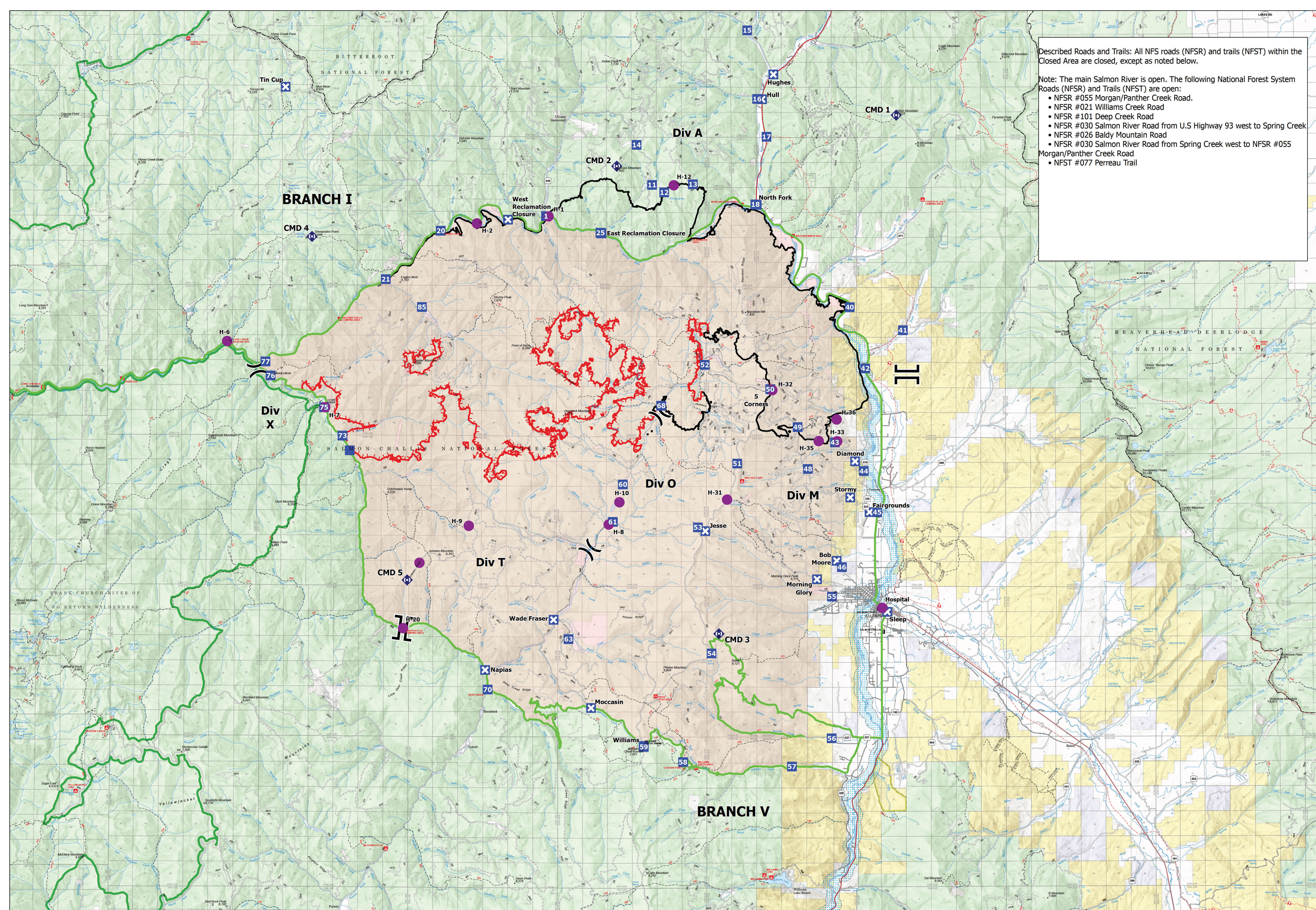


Described Roads and Trails: All NFS roads (NFSR) and trails (NFST) within the Closed Area are closed, except as noted below.

- Note: The main Salmon River is open. The following National Forest System Roads (NFSR) and Trails (NFST) are open:
- NFSR #055 Morgan/Panther Creek Road.
  - NFSR #021 Williams Creek Road
  - NFSR #101 Deep Creek Road
  - NFSR #030 Salmon River Road from U.S Highway 93 west to Spring Creek
  - NFSR #026 Baldy Mountain Road
  - NFSR #030 Salmon River Road from Spring Creek west to NFSR #055 Morgan/Panther Creek Road
  - NFST #077 Perreau Trail



**Security Moose**  
 ID-SCF-022105  
 96,821 Acres  
 08/28/2022

- Helispot
- ) Division Break
- ⌋ Branch Break
- Drop Point
- ⊠ Road Block Staffed
- ⚡ Repeater
- Open Route
- Contained
- Uncontained
- ▭ FS Wilderness Boundary
- ▭ Closure Area

