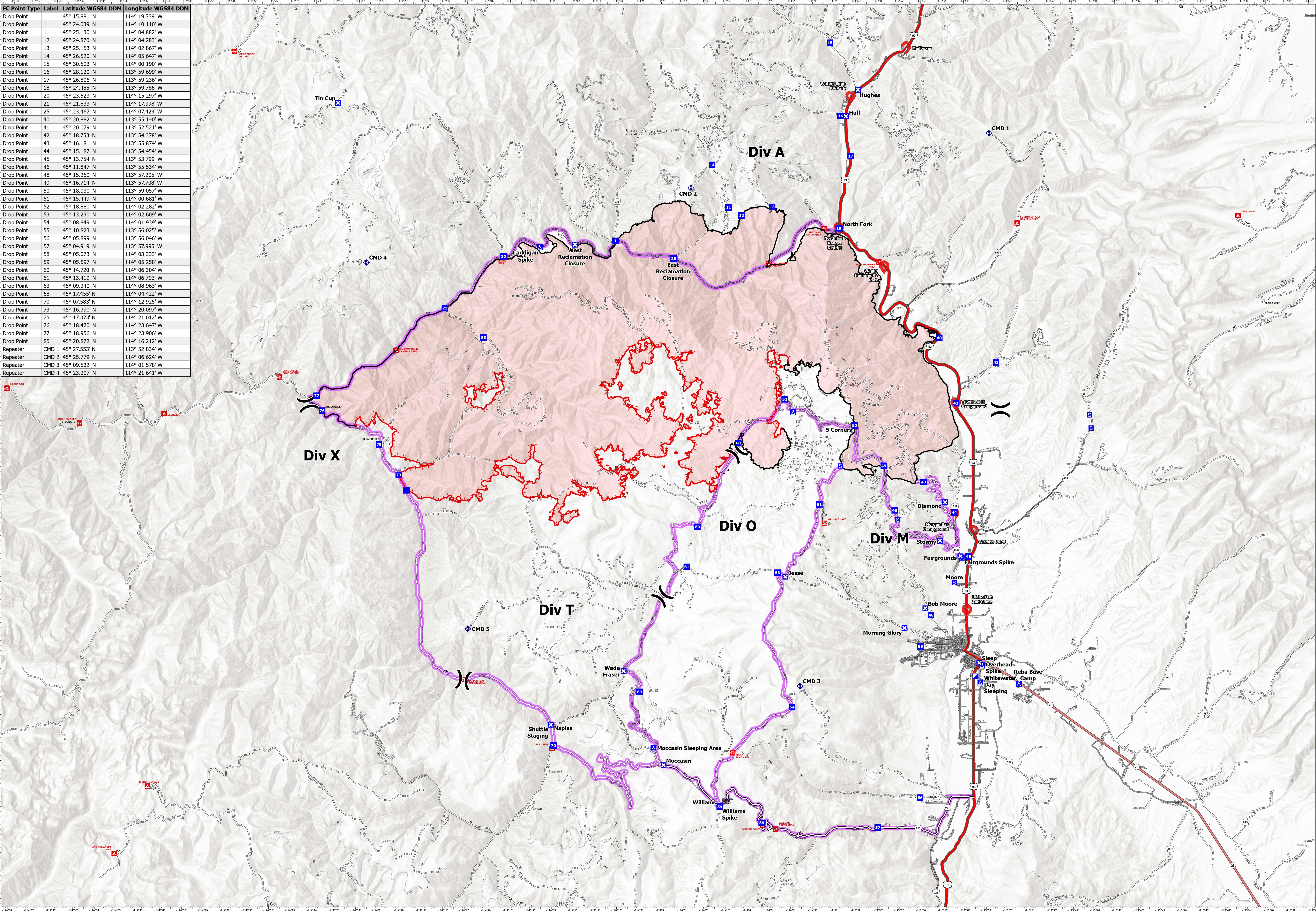



FC Point Type	Label	Latitude WGS84 DDM	Longitude WGS84 DDM
Drop Point		45° 15.881' N	114° 19.739' W
Drop Point	1	45° 24.039' N	114° 10.110' W
Drop Point	11	45° 25.130' N	114° 04.882' W
Drop Point	12	45° 24.870' N	114° 04.283' W
Drop Point	13	45° 25.153' N	114° 02.867' W
Drop Point	14	45° 26.520' N	114° 05.647' W
Drop Point	15	45° 30.503' N	114° 00.190' W
Drop Point	16	45° 28.120' N	113° 59.699' W
Drop Point	17	45° 26.806' N	113° 59.236' W
Drop Point	18	45° 24.455' N	113° 59.786' W
Drop Point	20	45° 23.523' N	114° 15.297' W
Drop Point	21	45° 21.833' N	114° 17.998' W
Drop Point	25	45° 23.467' N	114° 07.423' W
Drop Point	40	45° 20.882' N	113° 55.140' W
Drop Point	41	45° 20.079' N	113° 52.521' W
Drop Point	42	45° 18.753' N	113° 54.378' W
Drop Point	43	45° 16.181' N	113° 55.874' W
Drop Point	44	45° 15.187' N	113° 54.454' W
Drop Point	45	45° 13.754' N	113° 53.799' W
Drop Point	46	45° 11.847' N	113° 55.534' W
Drop Point	48	45° 15.260' N	113° 57.205' W
Drop Point	49	45° 16.714' N	113° 57.708' W
Drop Point	50	45° 18.030' N	113° 59.057' W
Drop Point	51	45° 15.449' N	114° 00.681' W
Drop Point	52	45° 18.880' N	114° 02.282' W
Drop Point	53	45° 13.230' N	114° 02.609' W
Drop Point	54	45° 08.849' N	114° 01.939' W
Drop Point	55	45° 10.823' N	113° 56.025' W
Drop Point	56	45° 05.899' N	113° 56.046' W
Drop Point	57	45° 04.919' N	113° 57.995' W
Drop Point	58	45° 05.073' N	114° 03.333' W
Drop Point	59	45° 05.597' N	114° 05.258' W
Drop Point	60	45° 14.720' N	114° 06.304' W
Drop Point	61	45° 13.419' N	114° 06.793' W
Drop Point	63	45° 09.340' N	114° 08.963' W
Drop Point	68	45° 17.455' N	114° 04.422' W
Drop Point	70	45° 07.583' N	114° 12.925' W
Drop Point	73	45° 16.390' N	114° 20.097' W
Drop Point	75	45° 17.373' N	114° 21.012' W
Drop Point	76	45° 18.470' N	114° 23.647' W
Drop Point	77	45° 18.956' N	114° 23.906' W
Drop Point	85	45° 20.872' N	114° 16.212' W
Repeater	CMD 1	45° 27.553' N	113° 52.834' W
Repeater	CMD 2	45° 25.779' N	114° 06.624' W
Repeater	CMD 3	45° 09.532' N	114° 01.578' W
Repeater	CMD 4	45° 23.307' N	114° 21.641' W

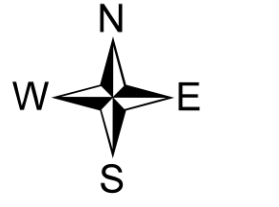


Transportation
 Moose ID-SCF-022105
 98,403 acres

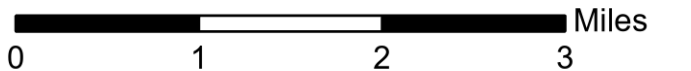
- X Division Break
- X Incident Command Post
- X Drop Point
- X Closure
- X Camp
- X Staging Area
- X Repeater
- X Access or Improved Road
- X Contained
- X Uncontained
- X Paved Road
- X Gravel Road
- X Dirt Roads
- X Unimproved Roads
- X Closed Roads
- X Primary Highway
- X Secondary Highway
- X Paved Roads
- X Dirt (Not Paved)
- X Minor Roads
- X Main Access Routes
- X Trapline location



Regional Incident
Great Basin
Management Team



Created 8/29/2022 at 2204
 North American 1983 Datum, Lat/Long Grid



0 1 2 3 Miles