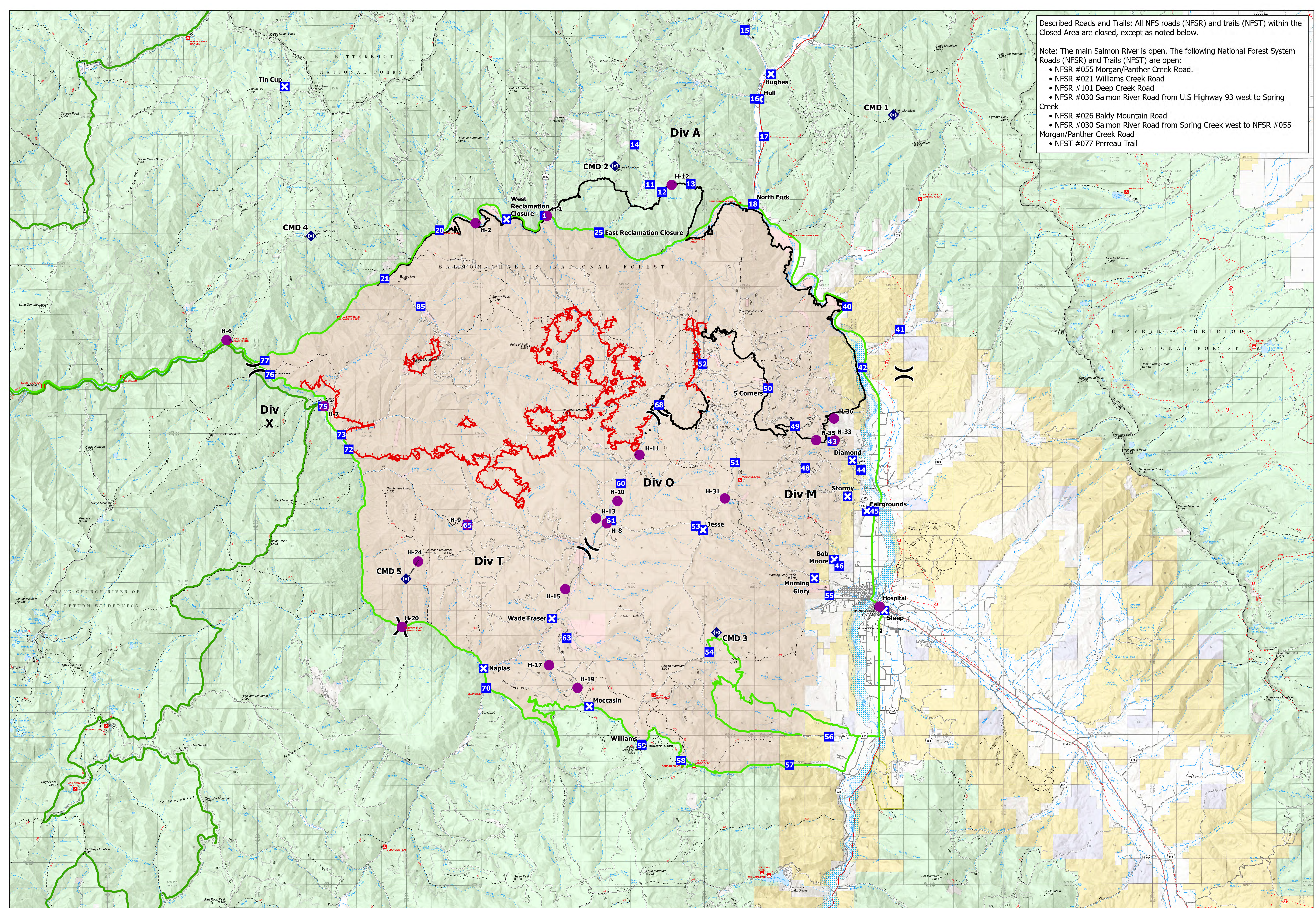


Described Roads and Trails: All NFS roads (NFSR) and trails (NFST) within the Closed Area are closed, except as noted below.

- Note: The main Salmon River is open. The following National Forest System Roads (NFSR) and Trails (NFST) are open:
- NFSR #055 Morgan/Panther Creek Road.
 - NFSR #021 Williams Creek Road
 - NFSR #101 Deep Creek Road
 - NFSR #030 Salmon River Road from U.S Highway 93 west to Spring Creek
 - NFSR #026 Baldy Mountain Road
 - NFSR #030 Salmon River Road from Spring Creek west to NFSR #055 Morgan/Panther Creek Road
 - NFST #077 Perreau Trail



Security
Moose
ID-SCF-022105
101,312 Acres

- Helispot
- X Division Break
- Drop Point
- ⊠ Road Block Staffed
- ◆ Repeater
- Open Route
- Contained
- Uncontained
- FS Wilderness Boundary
- Closure Area
- State Public Lands
- Other State Lands
- Bureau of Land Management Lands

