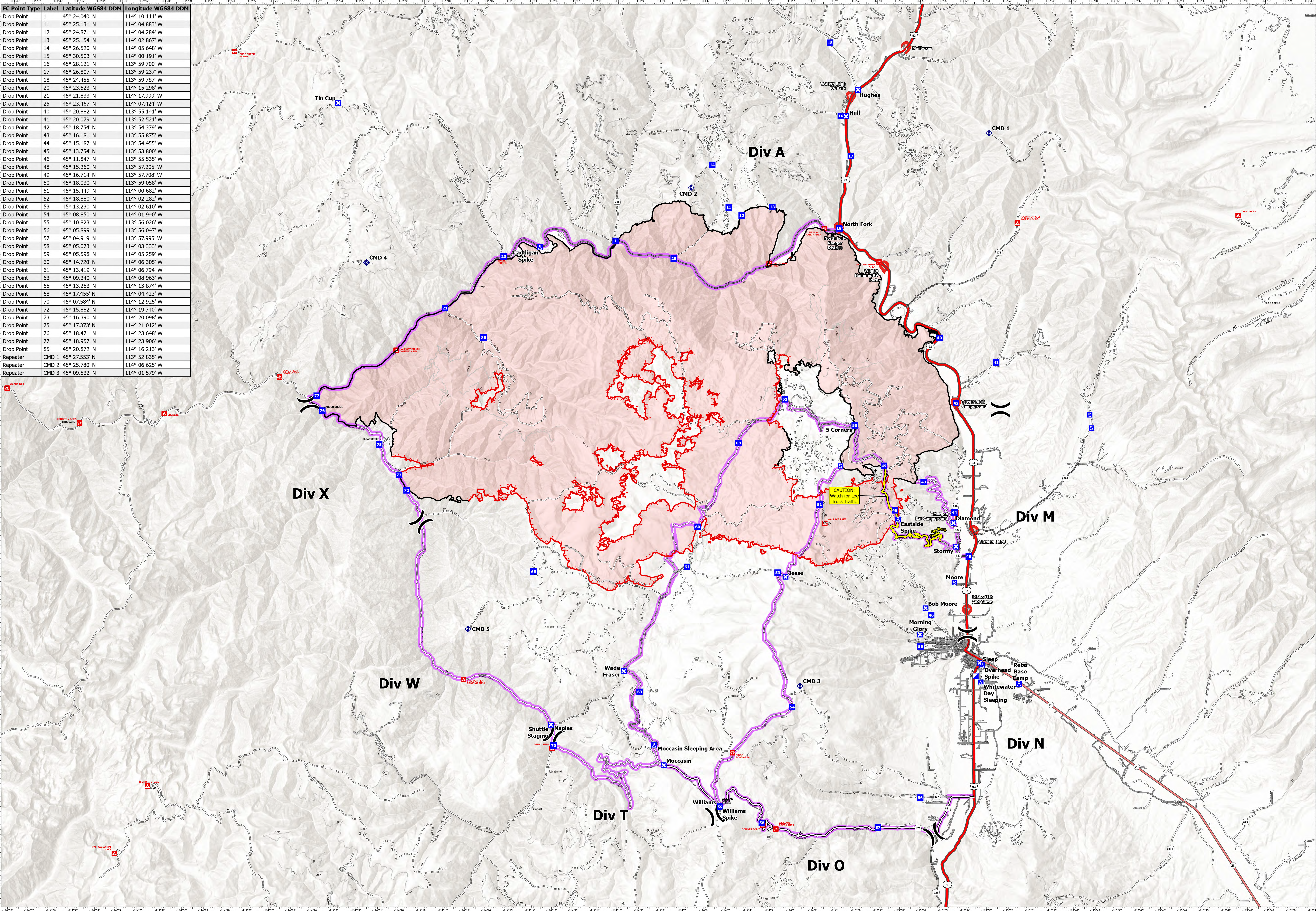



FC Point Type	Label	Latitude WGS84 DDM	Longitude WGS84 DDM
Drop Point	1	45° 24.040' N	114° 10.111' W
Drop Point	11	45° 25.131' N	114° 04.883' W
Drop Point	12	45° 24.871' N	114° 04.284' W
Drop Point	13	45° 25.154' N	114° 02.867' W
Drop Point	14	45° 26.520' N	114° 05.648' W
Drop Point	15	45° 30.503' N	114° 00.191' W
Drop Point	16	45° 28.121' N	113° 59.700' W
Drop Point	17	45° 26.807' N	113° 59.237' W
Drop Point	18	45° 24.455' N	113° 59.787' W
Drop Point	20	45° 23.523' N	114° 15.298' W
Drop Point	21	45° 21.833' N	114° 17.999' W
Drop Point	25	45° 23.467' N	114° 07.424' W
Drop Point	40	45° 20.882' N	113° 55.141' W
Drop Point	41	45° 20.079' N	113° 52.521' W
Drop Point	42	45° 18.754' N	113° 54.379' W
Drop Point	43	45° 16.181' N	113° 55.875' W
Drop Point	44	45° 15.187' N	113° 54.455' W
Drop Point	45	45° 13.754' N	113° 53.800' W
Drop Point	46	45° 11.847' N	113° 55.535' W
Drop Point	48	45° 15.260' N	113° 57.205' W
Drop Point	49	45° 16.714' N	113° 57.708' W
Drop Point	50	45° 18.030' N	113° 59.058' W
Drop Point	51	45° 15.449' N	114° 00.682' W
Drop Point	52	45° 18.880' N	114° 02.282' W
Drop Point	53	45° 13.230' N	114° 02.610' W
Drop Point	54	45° 08.850' N	114° 01.940' W
Drop Point	55	45° 10.823' N	113° 56.026' W
Drop Point	56	45° 05.899' N	113° 56.047' W
Drop Point	57	45° 04.919' N	113° 57.995' W
Drop Point	58	45° 05.073' N	114° 03.333' W
Drop Point	59	45° 05.598' N	114° 05.259' W
Drop Point	60	45° 14.720' N	114° 06.305' W
Drop Point	61	45° 13.419' N	114° 06.794' W
Drop Point	63	45° 09.340' N	114° 08.963' W
Drop Point	65	45° 13.253' N	114° 13.874' W
Drop Point	68	45° 17.455' N	114° 04.423' W
Drop Point	70	45° 07.584' N	114° 12.925' W
Drop Point	72	45° 15.882' N	114° 19.740' W
Drop Point	73	45° 16.390' N	114° 20.098' W
Drop Point	75	45° 17.373' N	114° 21.012' W
Drop Point	76	45° 18.471' N	114° 23.648' W
Drop Point	77	45° 18.957' N	114° 23.906' W
Drop Point	85	45° 20.872' N	114° 16.213' W
Repeater	CMD 1	45° 27.553' N	113° 52.835' W
Repeater	CMD 2	45° 25.780' N	114° 06.625' W
Repeater	CMD 3	45° 09.532' N	114° 01.579' W



Transportation
 Moose ID-SCF-022105
 122,666 acres

- Division Break
- Incident Command Post
- Drop Point
- Closure
- Camp
- Staging Area
- Repeater
- CAUTION: Log Truck Traffic
- Access or Improved Road
- Contained
- Uncontained
- Paved Road
- Gravel Road
- Dirt Roads
- Unimproved Roads
- Closed Roads
- Primary Highway
- Secondary Highway
- Paved Roads
- Dirt (Not Paved)
- Minor Roads
- Main Access Routes
- Trapline location



Created 9/8/2022 at 2049
 North American 1983 Datum, Lat/Long Grid
 0 1 2 3 Miles