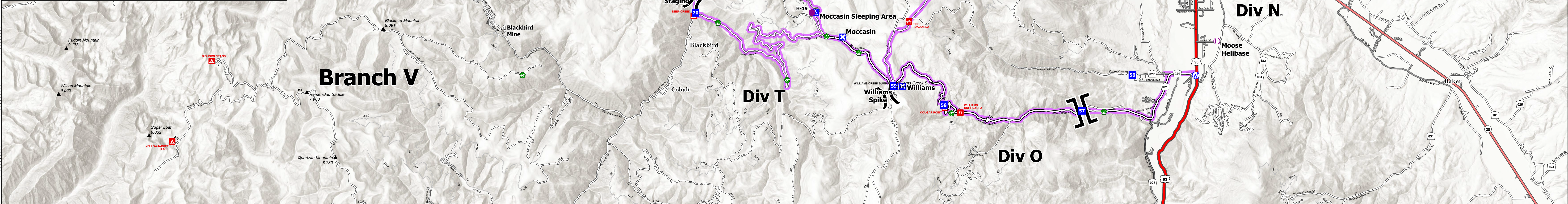
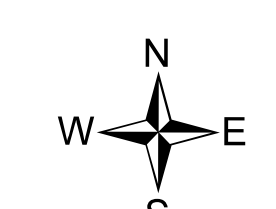


FC Point Type	Label	Latitude WGS84 DDM	Longitude WGS84 DDM
Airstrip or Airport		45° 20.726' N	114° 16.04816706' W
Camp		45° 15.278' N	113° 57.18870432' W
Camp		45° 10.22740398' N	114° 09.4676100' W
Camp	Moccasin Sleeping Area	45° 07.608' N	114° 08.29178826' W
Camp	Reba Base Camp	45° 09.605' N	113° 51.49379034' W
Camp	Spring Creek Spike	45° 23.506' N	114° 15.28118016' W
Camp	Whitewater Day Sleeping	45° 09.648' N	113° 53.26199070' W
Camp	Williams Spike	45° 05.607' N	114° 05.27028672' W
Drop Point	1	45° 24.040' N	114° 10.11095856' W
Drop Point	11	45° 25.131' N	114° 04.88315988' W
Drop Point	12	45° 24.871' N	114° 04.28374206' W
Drop Point	13	45° 25.154' N	114° 02.86740654' W
Drop Point	14	45° 26.520' N	114° 05.64800268' W
Drop Point	15	45° 30.503' N	114° 00.19120272' W
Drop Point	16	45° 28.121' N	113° 59.69973636' W
Drop Point	17	45° 26.807' N	113° 59.23679040' W
Drop Point	18	45° 24.455' N	113° 59.78653602' W
Drop Point	20	45° 23.523' N	114° 15.29777772' W
Drop Point	21	45° 21.833' N	114° 17.99877792' W
Drop Point	25	45° 23.467' N	114° 07.42399470' W
Drop Point	40	45° 20.882' N	113° 55.14065478' W
Drop Point	41	45° 20.079' N	113° 52.52132484' W
Drop Point	42	45° 18.754' N	113° 54.37910598' W
Drop Point	43	45° 16.181' N	113° 55.87503168' W
Drop Point	44	45° 15.187' N	113° 54.45459678' W
Drop Point	45	45° 13.754' N	113° 53.79989520' W
Drop Point	46	45° 11.847' N	113° 55.5326746' W
Drop Point	48	45° 15.260' N	113° 57.20537238' W
Drop Point	49	45° 16.714' N	113° 57.70827924' W
Drop Point	50	45° 18.030' N	113° 59.05777344' W
Drop Point	51	45° 15.449' N	114° 00.68174994' W
Drop Point	52	45° 18.880' N	114° 02.28229020' W
Drop Point	53	45° 13.230' N	114° 02.60957898' W
Drop Point	54	45° 08.850' N	114° 01.95635604' W
Drop Point	55	45° 10.823' N	113° 56.02594055' W
Drop Point	56	45° 05.999' N	113° 56.04698022' W
Drop Point	57	45° 04.919' N	113° 57.99549012' W
Drop Point	58	45° 05.073' N	114° 03.33334680' W
Drop Point	59	45° 05.598' N	114° 05.25861666' W
Drop Point	60	45° 14.720' N	114° 14.720' W
Drop Point	61	45° 13.419' N	114° 06.79380978' W
Drop Point	63	45° 09.340' N	114° 08.96342250' W
Drop Point	65	45° 13.25337672' N	114° 13.87377546' W
Drop Point	68	45° 17.455' N	114° 04.42201446' W
Drop Point	70	45° 07.584' N	114° 12.92538700' W
Drop Point	72	45° 15.882' N	114° 19.73971536' W
Drop Point	73	45° 16.390' N	114° 20.09755758' W
Drop Point	75	45° 17.373' N	114° 21.01243806' W
Drop Point	76	45° 18.471' N	114° 23.64757434' W
Drop Point	77	45° 18.957' N	114° 23.90629092' W
Drop Point	85	45° 20.872' N	114° 16.21277736' W
Helibase	Moose Helibase	45° 06.821' N	113° 52.78732998' W
Helispot	H-1	45° 24.030' N	114° 09.98432238' W
Helispot	H-10	45° 14.100' N	114° 06.40777416' W
Helispot	H-11	45° 15.718' N	45° 15.718' W
Helispot	H-12	45° 25.118' N	114° 03.81177570' W
Helispot	H-13	45° 13.495' N	114° 07.51877430' W
Helispot	H-17	45° 08.383' N	114° 09.83377374' W
Helispot	H-19	45° 07.597' N	114° 08.42577230' W
Helispot	H-2	45° 23.782' N	114° 13.51669926' W
Helispot	H-20	45° 09.707' N	114° 17.08577550' W
Helispot	H-205	45° 21.10000002' N	114° 25.93330002' W
Helispot	H-24	45° 11.983' N	114° 16.29468096' W
Helispot	H-31	45° 14.195' N	114° 01.17877314' W
Helispot	H-33	45° 16.220' N	113° 55.76077248' W
Helispot	H-35	45° 16.230' N	113° 56.67077262' W
Helispot	H-36	45° 16.980' N	113° 55.78977264' W
Helispot	H-40	45° 09.690' N	113° 57.18097152' W
Helispot	H-6	45° 19.659' N	114° 25.79851200' W
Helispot	H-7	45° 17.376' N	114° 20.95526604' W
Helispot	H-8	45° 13.327' N	114° 06.99777414' W
Helispot	H-9	45° 13.27107642' N	114° 13.87390704' W
Helispot	Hospital	45° 10.432' N	113° 53.55408774' W
Incident Command Post		45° 09.858' N	113° 53.48759322' W
Mobile Weather Unit	IRAWS 37	45° 12.417' N	113° 58.41743886' W
Mobile Weather Unit	IRAWS 38	45° 17.520' N	113° 59.35244010' W
Mobile Weather Unit	IRAWS 40	45° 17.140' N	114° 09.16910862' W
Mobile Weather Unit	IRAWS 41	45° 23.247' N	114° 21.34709016' W
Mobile Weather Unit	IRAWS 43	45° 13.434' N	114° 06.85910742' W
Mobile Weather Unit	IRAWS 44	45° 11.647' N	114° 16.68075174' W
Mobile Weather Unit	IRAWS 39	45° 17.222' N	114° 20.53244424' W
Repeater	CMD 1	45° 27.553' N	113° 52.83467400' W
Repeater	CMD 2	45° 25.780' N	114° 06.62487642' W
Repeater	CMD 3	45° 09.532' N	114° 01.57877232' W
Repeater	CMD 4	45° 23.308' N	114° 21.64163310' W
Repeater	CMD 5	45° 11.383' N	114° 16.89112620' W
Staging Area		45° 17.936' N	113° 48.13495254' W
Staging Area		45° 18.362' N	113° 48.20103912' W
Staging Area		45° 16.709' N	113° 59.70961836' W
Staging Area		45° 14.951' N	113° 57.06378300' W
Staging Area		45° 05.586' N	114° 05.29236528' W
Staging Area		45° 19.08827814' N	114° 26.95051170' W
Staging Area		45° 19.11688326' N	114° 26.98778478' W
Staging Area		45° 19.13728248' N	114° 26.93521332' W
Staging Area	Moore	45° 12.903' N	113° 54.45911154' W
Staging Area	Shuttle Staging	45° 08.264' N	114° 13.05746568' W



Transportation
Moose ID-SCF-022105
130,093 acres
9/21/2022

✕ Mine Locations	📍 Incident Command Post	📶 Repeater	🛣️ Gravel Road	🛤️ Dirt (Not Paved)
✈️ Airstrip or Airport	📍 Drop Point	💧 Water Source	🛤️ Dirt Roads	🛤️ Minor Roads
📍 Helispot	🚫 Closure	📍 Trapline Locations	🛤️ Unimproved Roads	🛤️ Closed Roads
📍 Helibase	📍 Camp	🔴 Contained	🛤️ Closed Roads	🛤️ Primary Highway
📍 Sling Site	📍 Staging Area	🔴 Uncontained	🛤️ Access or Improved Road	🛤️ Secondary Highway
✂️ Division Break	📍 Water Development or Draft Site	🔴 Access or Improved Road	🛤️ Paved Road	🛤️ Paved Roads
✂️ Branch Break	📍 Mobile Weather Unit	🔴 Paved Road		



Created 9/20/2022 at 2018
North American 1983 Datum, Lat/Long Grid
0 1 2 3 Miles

