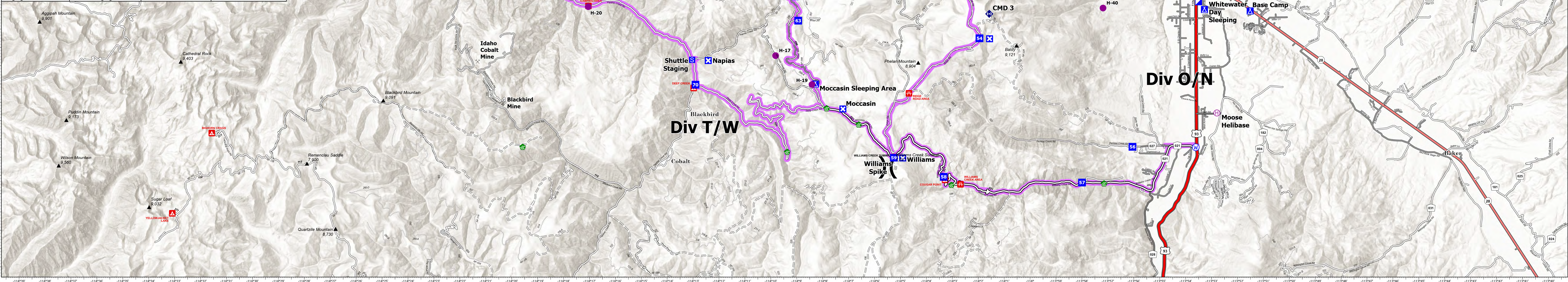



| FC Point Type         | Label                   | Latitude WGS84 DDM | Longitude WGS84 DDM |
|-----------------------|-------------------------|--------------------|---------------------|
| Airstrip or Airport   |                         | 45° 20.726' N      | 114° 16.048' W      |
| Camp                  |                         | 45° 15.278' N      | 113° 57.189' W      |
| Camp                  |                         | 45° 10.227' N      | 114° 09.470' W      |
| Camp                  | Caddigan Spike          | 45° 23.831' N      | 114° 13.620' W      |
| Camp                  | Moccasin Sleeping Area  | 45° 07.608' N      | 114° 08.292' W      |
| Camp                  | Reba Base Camp          | 45° 09.605' N      | 113° 51.494' W      |
| Camp                  | Whitewater Day Sleeping | 45° 09.648' N      | 113° 53.262' W      |
| Camp                  | Williams Spike          | 45° 05.607' N      | 114° 05.270' W      |
| Drop Point            | 1                       | 45° 24.040' N      | 114° 10.111' W      |
| Drop Point            | 11                      | 45° 25.131' N      | 114° 04.883' W      |
| Drop Point            | 12                      | 45° 24.871' N      | 114° 04.284' W      |
| Drop Point            | 13                      | 45° 25.154' N      | 114° 02.867' W      |
| Drop Point            | 14                      | 45° 26.520' N      | 114° 05.648' W      |
| Drop Point            | 18                      | 45° 24.455' N      | 113° 59.787' W      |
| Drop Point            | 20                      | 45° 23.523' N      | 114° 15.298' W      |
| Drop Point            | 21                      | 45° 21.833' N      | 114° 17.999' W      |
| Drop Point            | 25                      | 45° 23.467' N      | 114° 07.424' W      |
| Drop Point            | 41                      | 45° 20.079' N      | 113° 52.521' W      |
| Drop Point            | 42                      | 45° 18.754' N      | 113° 54.379' W      |
| Drop Point            | 43                      | 45° 16.181' N      | 113° 55.875' W      |
| Drop Point            | 44                      | 45° 15.187' N      | 113° 54.455' W      |
| Drop Point            | 45                      | 45° 13.754' N      | 113° 53.800' W      |
| Drop Point            | 46                      | 45° 11.847' N      | 113° 55.535' W      |
| Drop Point            | 48                      | 45° 15.260' N      | 113° 57.205' W      |
| Drop Point            | 49                      | 45° 16.714' N      | 113° 57.708' W      |
| Drop Point            | 50                      | 45° 18.030' N      | 113° 59.058' W      |
| Drop Point            | 51                      | 45° 15.449' N      | 114° 00.682' W      |
| Drop Point            | 52                      | 45° 18.880' N      | 114° 02.282' W      |
| Drop Point            | 53                      | 45° 13.230' N      | 114° 02.610' W      |
| Drop Point            | 54                      | 45° 08.864' N      | 114° 01.956' W      |
| Drop Point            | 55                      | 45° 10.823' N      | 113° 56.026' W      |
| Drop Point            | 56                      | 45° 05.899' N      | 113° 56.047' W      |
| Drop Point            | 57                      | 45° 04.919' N      | 113° 57.995' W      |
| Drop Point            | 58                      | 45° 05.073' N      | 114° 03.333' W      |
| Drop Point            | 59                      | 45° 05.598' N      | 114° 05.352' W      |
| Drop Point            | 60                      | 45° 14.720' N      | 114° 05.205' W      |
| Drop Point            | 61                      | 45° 13.419' N      | 114° 06.794' W      |
| Drop Point            | 63                      | 45° 09.340' N      | 114° 08.963' W      |
| Drop Point            | 65                      | 45° 13.253' N      | 114° 13.874' W      |
| Drop Point            | 68                      | 45° 17.455' N      | 114° 04.423' W      |
| Drop Point            | 70                      | 45° 07.584' N      | 114° 13.325' W      |
| Drop Point            | 72                      | 45° 15.882' N      | 114° 19.740' W      |
| Drop Point            | 73                      | 45° 16.390' N      | 114° 20.098' W      |
| Drop Point            | 75                      | 45° 17.373' N      | 114° 21.012' W      |
| Drop Point            | 76                      | 45° 18.471' N      | 114° 23.648' W      |
| Drop Point            | 77                      | 45° 18.957' N      | 114° 23.906' W      |
| Drop Point            | 85                      | 45° 20.872' N      | 114° 16.213' W      |
| Helibase              | Moose Helibase          | 45° 06.821' N      | 113° 52.787' W      |
| Helispot              | H-1                     | 45° 24.030' N      | 114° 09.984' W      |
| Helispot              | H-10                    | 45° 14.100' N      | 114° 06.471' W      |
| Helispot              | H-11                    | 45° 15.718' N      | 114° 05.388' W      |
| Helispot              | H-12                    | 45° 25.118' N      | 114° 03.812' W      |
| Helispot              | H-13                    | 45° 13.495' N      | 114° 07.519' W      |
| Helispot              | H-17                    | 45° 08.383' N      | 114° 09.834' W      |
| Helispot              | H-19                    | 45° 07.597' N      | 114° 08.426' W      |
| Helispot              | H-2                     | 45° 23.782' N      | 114° 13.517' W      |
| Helispot              | H-20                    | 45° 09.707' N      | 114° 17.086' W      |
| Helispot              | H-24                    | 45° 11.983' N      | 114° 16.295' W      |
| Helispot              | H-31                    | 45° 14.195' N      | 114° 01.179' W      |
| Helispot              | H-33                    | 45° 16.220' N      | 113° 55.761' W      |
| Helispot              | H-35                    | 45° 16.230' N      | 113° 56.671' W      |
| Helispot              | H-36                    | 45° 16.980' N      | 113° 55.790' W      |
| Helispot              | H-40                    | 45° 09.690' N      | 113° 57.181' W      |
| Helispot              | H-6                     | 45° 19.659' N      | 114° 25.799' W      |
| Helispot              | H-7                     | 45° 17.376' N      | 114° 20.955' W      |
| Helispot              | H-8                     | 45° 13.327' N      | 114° 06.998' W      |
| Helispot              | H-9                     | 45° 13.271' N      | 114° 13.874' W      |
| Helispot              | Hospital                | 45° 10.432' N      | 113° 53.554' W      |
| Incident Command Post |                         | 45° 09.858' N      | 113° 53.488' W      |
| Mobile Weather Unit   | IRAWS 37                | 45° 12.417' N      | 113° 58.417' W      |
| Mobile Weather Unit   | IRAWS 38                | 45° 17.520' N      | 113° 59.352' W      |
| Mobile Weather Unit   | IRAWS 40                | 45° 17.140' N      | 114° 09.169' W      |
| Mobile Weather Unit   | IRAWS 41                | 45° 23.247' N      | 114° 21.347' W      |
| Mobile Weather Unit   | IRAWS 43                | 45° 13.434' N      | 114° 06.859' W      |
| Mobile Weather Unit   | IRAWS 44                | 45° 11.647' N      | 114° 16.681' W      |
| Mobile Weather Unit   | IRAWS 39                | 45° 17.222' N      | 114° 20.532' W      |
| Repeater              | CMD 1                   | 45° 27.553' N      | 113° 52.835' W      |
| Repeater              | CMD 2                   | 45° 25.780' N      | 114° 06.625' W      |
| Repeater              | CMD 3                   | 45° 09.532' N      | 114° 01.579' W      |
| Repeater              | CMD 4                   | 45° 23.308' N      | 114° 21.642' W      |
| Repeater              | CMD 5                   | 45° 11.383' N      | 114° 16.891' W      |
| Staging Area          |                         | 45° 17.936' N      | 113° 48.135' W      |
| Staging Area          |                         | 45° 18.362' N      | 113° 48.201' W      |
| Staging Area          |                         | 45° 16.709' N      | 113° 59.710' W      |
| Staging Area          |                         | 45° 14.951' N      | 113° 57.064' W      |
| Staging Area          |                         | 45° 05.586' N      | 114° 05.292' W      |
| Staging Area          | Moore                   | 45° 12.903' N      | 113° 54.459' W      |
| Staging Area          | Shuttle Staging         | 45° 08.264' N      | 114° 13.057' W      |



**Transportation**  
Moose ID-SCF-022105  
130,112 acres  
9/30/2022

|                        |                                   |                       |                            |                       |
|------------------------|-----------------------------------|-----------------------|----------------------------|-----------------------|
| ✕ Mine Locations       | 📍 Incident Command Post           | 📶 Mobile Weather Unit | 🛣️ Access or Improved Road | 🛣️ Primary Highway    |
| 🛩️ Airstrip or Airport | 📍 Drop Point                      | 📶 Repeater            | 🛣️ Paved Road              | 🛣️ Secondary Highway  |
| 📍 Helibase             | 🚧 Closure                         | 📶 Water Source        | 🛣️ Gravel Road             | 🛣️ Paved Roads        |
| 📍 Sling Site           | 📍 Staging Area                    | 📍 Trapline Locations  | 🛣️ Dirt Roads              | 🛣️ Dirt (Not Paved)   |
| ✕ Division Break       | 📍 Water Development or Draft Site | 📍 Contained           | 🛣️ Unimproved Roads        | 🛣️ Minor Roads        |
|                        |                                   | 📍 Uncontained         | 🛣️ Closed Roads            | 🛣️ Main Access Routes |



Created 9/29/2022 at 2104  
North American 1983 Datum. Lat/Long Grid  
0 1 2 3 Miles