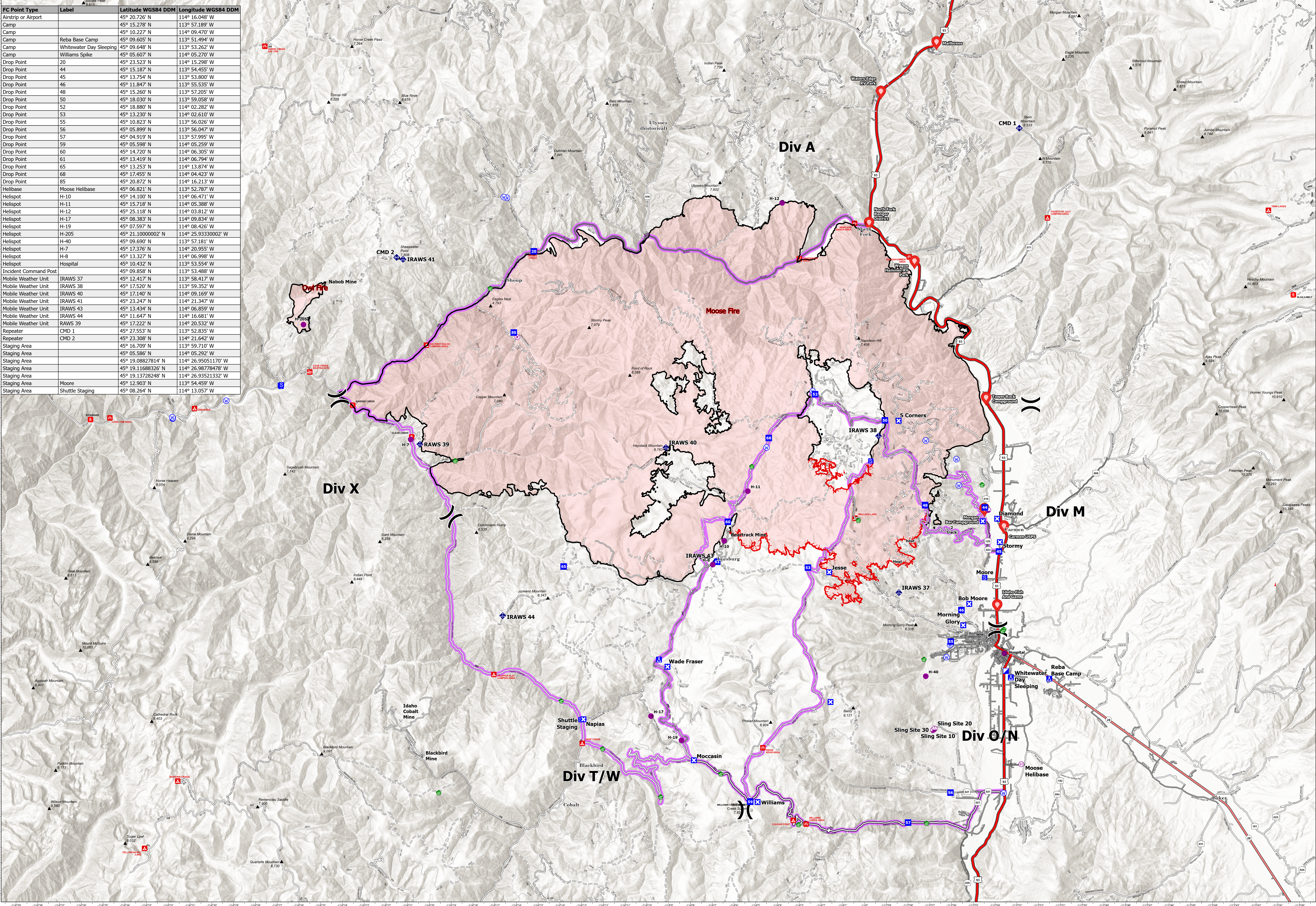


FC Point Type	Label	Latitude WGS84 DDM	Longitude WGS84 DDM
Airstrip or Airport		45° 20.726' N	114° 16.048' W
Camp		45° 15.278' N	113° 57.189' W
Camp		45° 10.227' N	114° 09.470' W
Camp	Reba Base Camp	45° 09.605' N	113° 51.494' W
Camp	Whitewater Day Sleeping	45° 09.648' N	113° 53.262' W
Camp	Williams Spike	45° 05.607' N	114° 05.270' W
Drop Point	20	45° 23.523' N	114° 15.298' W
Drop Point	44	45° 15.187' N	113° 54.455' W
Drop Point	45	45° 13.754' N	113° 53.800' W
Drop Point	46	45° 11.847' N	113° 55.535' W
Drop Point	48	45° 15.260' N	113° 57.205' W
Drop Point	50	45° 18.030' N	113° 59.058' W
Drop Point	52	45° 18.880' N	114° 02.282' W
Drop Point	53	45° 13.230' N	114° 02.610' W
Drop Point	55	45° 10.823' N	113° 56.026' W
Drop Point	56	45° 05.899' N	113° 56.047' W
Drop Point	57	45° 04.919' N	113° 57.995' W
Drop Point	59	45° 05.598' N	114° 05.259' W
Drop Point	60	45° 14.720' N	114° 06.305' W
Drop Point	61	45° 13.419' N	114° 06.794' W
Drop Point	65	45° 13.253' N	114° 13.874' W
Drop Point	68	45° 17.455' N	114° 04.423' W
Drop Point	85	45° 20.872' N	114° 16.213' W
Helibase	Moose Helibase	45° 06.821' N	113° 52.787' W
Helispot	H-10	45° 14.100' N	114° 06.471' W
Helispot	H-11	45° 15.718' N	114° 05.388' W
Helispot	H-12	45° 25.118' N	114° 03.812' W
Helispot	H-17	45° 08.383' N	114° 09.834' W
Helispot	H-19	45° 07.597' N	114° 08.426' W
Helispot	H-205	45° 21.10000002' N	114° 25.93330002' W
Helispot	H-40	45° 09.690' N	113° 57.181' W
Helispot	H-7	45° 17.376' N	114° 20.955' W
Helispot	H-8	45° 13.327' N	114° 06.998' W
Helispot	Hospital	45° 10.432' N	113° 53.554' W
Incident Command Post		45° 09.858' N	113° 53.488' W
Mobile Weather Unit	IRAWS 37	45° 12.417' N	113° 58.417' W
Mobile Weather Unit	IRAWS 38	45° 17.520' N	113° 59.352' W
Mobile Weather Unit	IRAWS 40	45° 17.140' N	114° 09.169' W
Mobile Weather Unit	IRAWS 41	45° 23.247' N	114° 21.347' W
Mobile Weather Unit	IRAWS 43	45° 13.434' N	114° 06.859' W
Mobile Weather Unit	IRAWS 44	45° 11.647' N	114° 16.681' W
Mobile Weather Unit	IRAWS 39	45° 17.222' N	114° 20.532' W
Repeater	CMD 1	45° 27.553' N	113° 52.835' W
Repeater	CMD 2	45° 23.308' N	114° 21.642' W
Staging Area		45° 16.709' N	113° 59.710' W
Staging Area		45° 05.586' N	114° 05.292' W
Staging Area		45° 19.08827814' N	114° 26.95051170' W
Staging Area		45° 19.11688326' N	114° 26.98778478' W
Staging Area		45° 19.13728248' N	114° 26.93521332' W
Staging Area	Moore	45° 12.903' N	113° 54.459' W
Staging Area	Shuttle Staging	45° 08.264' N	114° 13.057' W



Transportation
 Moose ID-SCF-022105
 130,123 acres
 10/10/2022

- ✕ Mine Locations
- ✈ Airstrip or Airport
- Helispot
- Ⓜ Helibase
- Ⓜ Sling Site
- ✕ Division Break
- Ⓜ Incident Command Post
- Ⓜ Drop Point
- Ⓜ Closure
- Ⓜ Staging Area
- Ⓜ Water Development or Draft Site
- Ⓜ Mobile Weather Unit
- Ⓜ Repeater
- Ⓜ Water Source
- Ⓜ Trapline Locations
- Contained
- Uncontained
- Access or Improved Road
- Paved Road
- Gravel Road
- Dirt Roads
- Unimproved Roads
- Closed Roads
- Primary Highway
- Secondary Highway
- Paved Roads
- Dirt (Not Paved)
- Minor Roads
- Main Access Routes

Created 10/9/2022 at 1011
 North American 1983 Datum, Lat/Long Grid
 0 1 2 3 Miles