

114°12'0"W 114°11'0"W 114°10'0"W 114°9'0"W 114°8'0"W 114°7'0"W 114°6'0"W 114°5'0"W 114°4'0"W 114°3'0"W 114°2'0"W 114°1'0"W 114°0'0"W 113°59'0"W 113°58'0"W

45°25'0"N
45°24'30"N
45°24'0"N
45°23'30"N
45°23'0"N
45°22'30"N
45°22'0"N
45°21'30"N
45°21'0"N
45°20'30"N
45°20'0"N
45°19'30"N
45°19'0"N

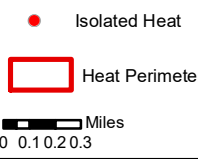
45°25'0"N
45°24'30"N
45°24'0"N
45°23'30"N
45°23'0"N
45°22'30"N
45°22'0"N
45°21'30"N
45°21'0"N
45°20'30"N
45°20'0"N
45°19'30"N
45°19'0"N



Infrared Map

Moose
ID-SCF-022105

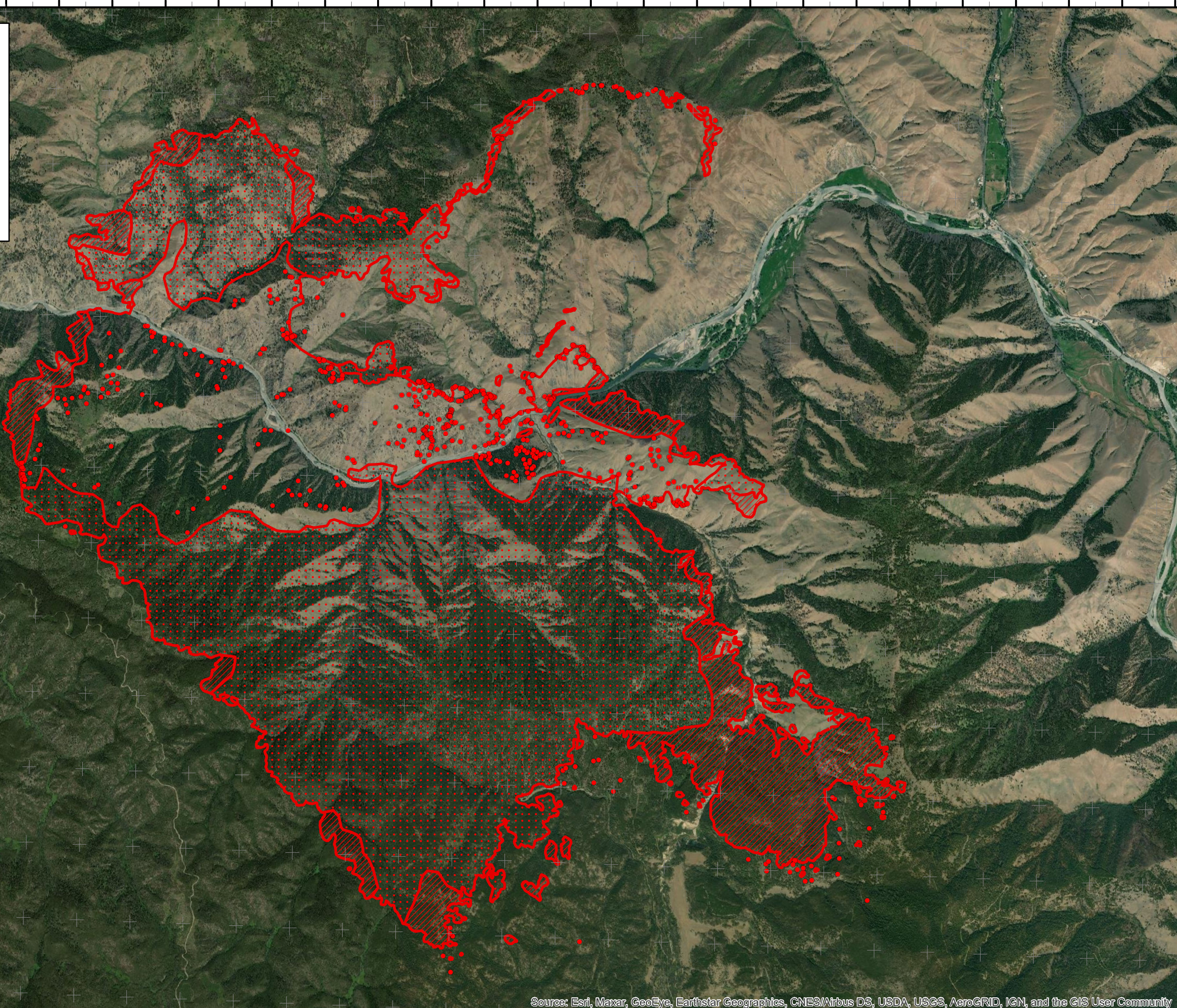
IR Flight: July 18, 2022 2141 MDT
Interpreter : Jim Grace
Interpreted Acres = 12,283



- Isolated Heat
- Heat Perimeter

- Intense Heat
- Scattered Heat

Lat/Long
GCS WGS84
30 second spacing



114°12'0"W 114°11'0"W 114°10'0"W 114°9'0"W 114°8'0"W 114°7'0"W 114°6'0"W 114°5'0"W 114°4'0"W 114°3'0"W 114°2'0"W 114°1'0"W 114°0'0"W 113°59'0"W 113°58'0"W