





114°26'W 114°24'W 114°22'W 114°20'W 114°18'W 114°16'W 114°14'W 114°12'W 114°10'W 114°8'W 114°6'W 114°4'W 114°2'W 114°W 113°58'W 113°56'W 113°54'W 113°52'W 113°50'W 113°48'W 113°46'W


45°28'N
45°26'N
45°24'N
45°22'N
45°20'N
45°18'N
45°16'N
45°14'N
45°12'N

45°28'N
45°26'N
45°24'N
45°22'N
45°20'N
45°18'N
45°16'N
45°14'N
45°12'N
45°10'N



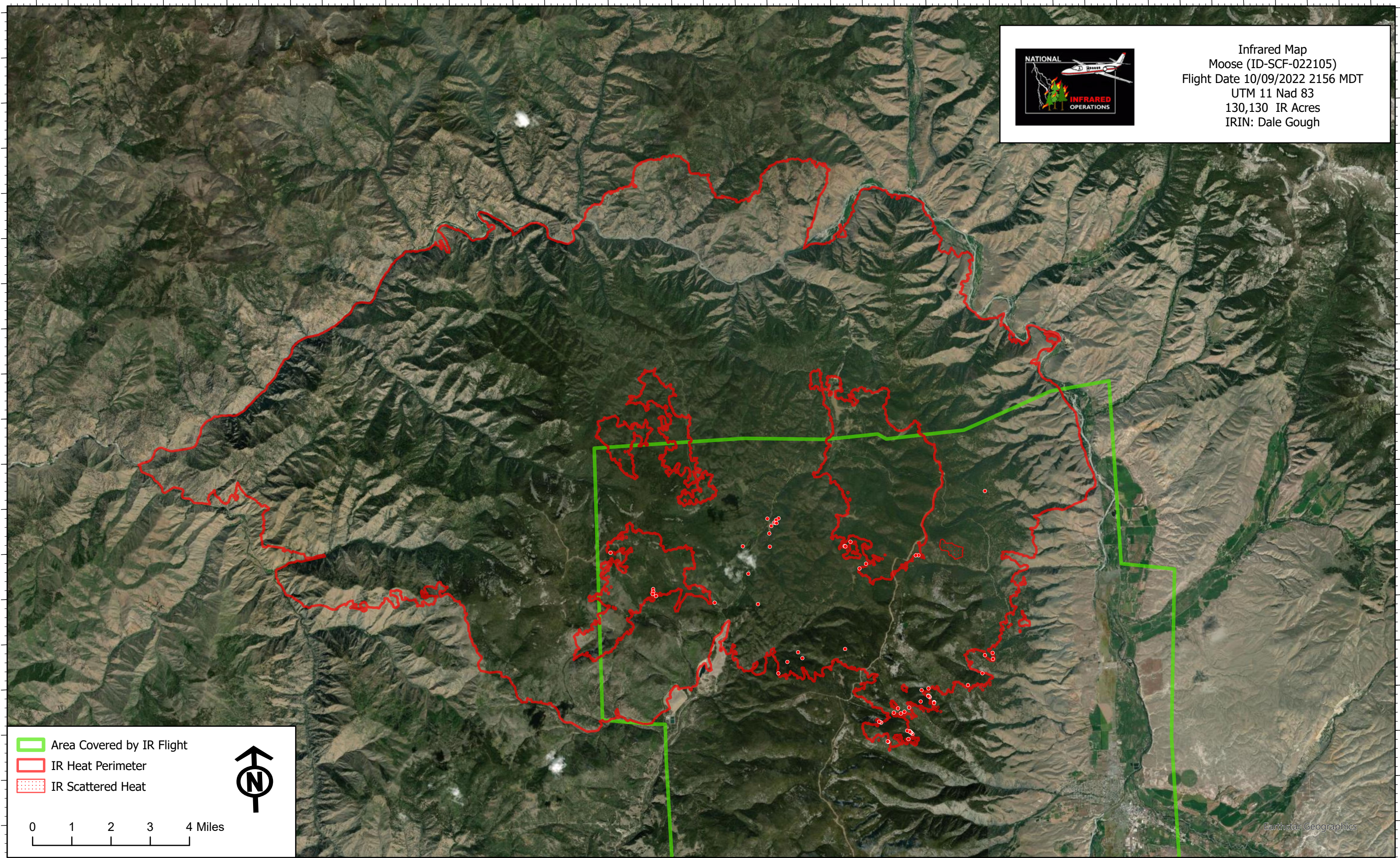
Infrared Map
Moose (ID-SCF-022105)
Flight Date 10/09/2022 2156 MDT
UTM 11 Nad 83
130,130 IR Acres
IRIN: Dale Gough

-  Area Covered by IR Flight
-  IR Heat Perimeter
-  IR Scattered Heat



0 1 2 3 4 Miles

114°28'W 114°26'W 114°24'W 114°22'W 114°20'W 114°18'W 114°16'W 114°14'W 114°12'W 114°10'W 114°8'W 114°6'W 114°4'W 114°2'W 114°W 113°58'W 113°56'W 113°54'W 113°52'W 113°50'W 113°48'W 113°46'W



Earthstar Geographics