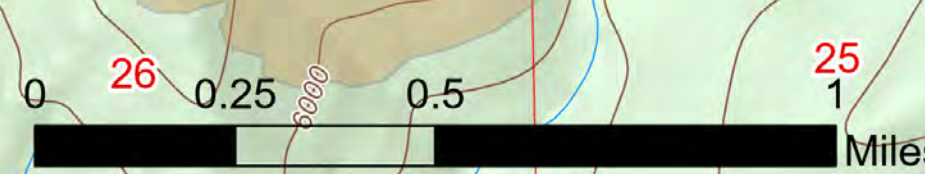


Operations

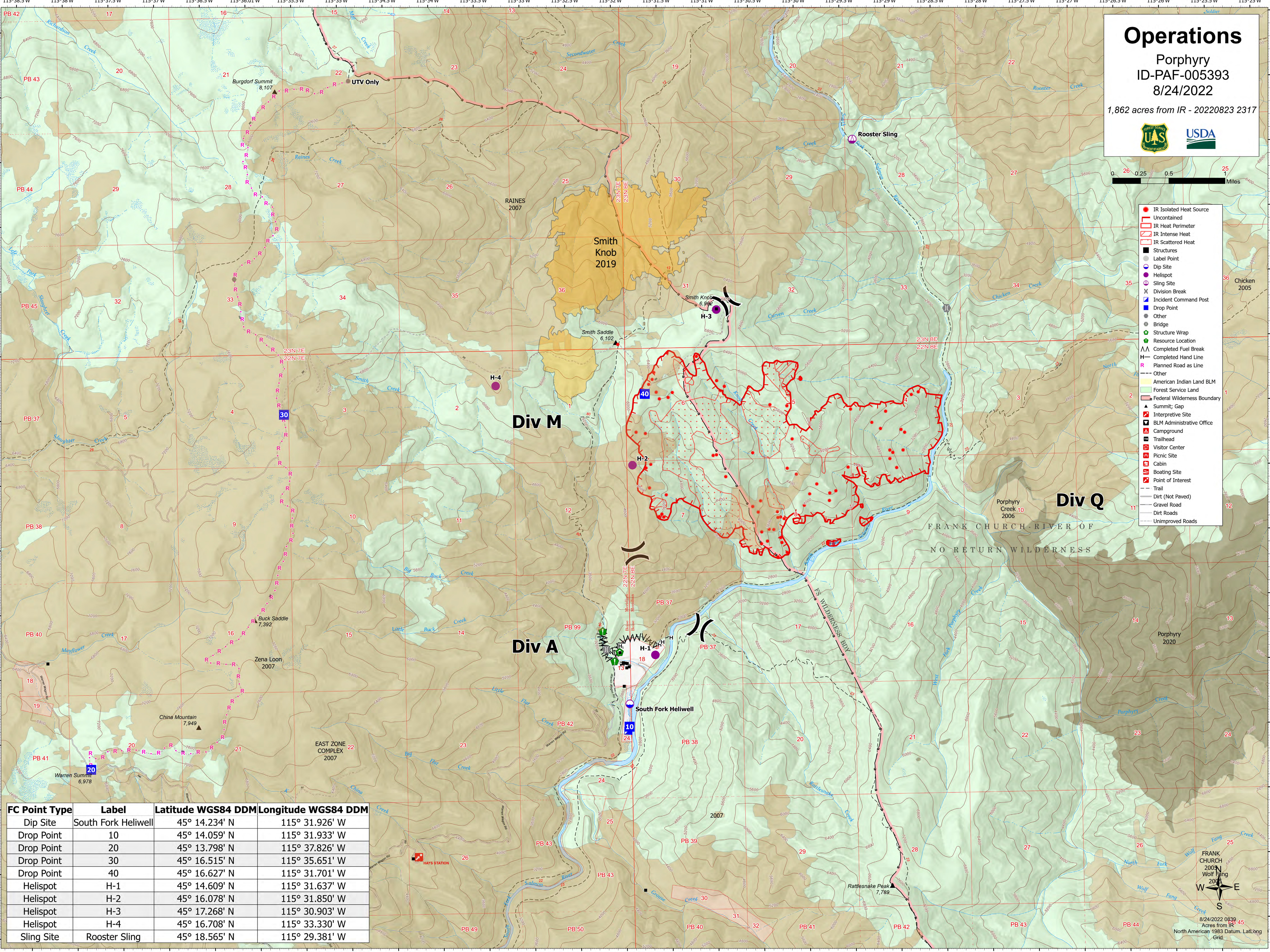
Porphyry
ID-PAF-005393
8/24/2022

1,862 acres from IR - 20220823 2317



- IR Isolated Heat Source
- Uncontained
- IR Heat Perimeter
- IR Intense Heat
- IR Scattered Heat
- Structures
- Label Point
- Dip Site
- Helispot
- Sling Site
- X Division Break
- Incident Command Post
- Drop Point
- Other
- Bridge
- Structure Wrap
- Resource Location
- ▲ Completed Fuel Break
- ▲ Completed Hand Line
- R Planned Road as Line
- Other
- American Indian Land BLM
- Forest Service Land
- Federal Wilderness Boundary
- ▲ Summit; Gap
- ▲ Interpretive Site
- ▲ BLM Administrative Office
- ▲ Campground
- ▲ Trailhead
- ▲ Visitor Center
- ▲ Picnic Site
- ▲ Cabin
- ▲ Boating Site
- ▲ Point of Interest
- Trail
- Dirt (Not Paved)
- Gravel Road
- Dirt Roads
- Unimproved Roads

FC Point Type	Label	Latitude WGS84 DDM	Longitude WGS84 DDM
Dip Site	South Fork Heliwell	45° 14.234' N	115° 31.926' W
Drop Point	10	45° 14.059' N	115° 31.933' W
Drop Point	20	45° 13.798' N	115° 37.826' W
Drop Point	30	45° 16.515' N	115° 35.651' W
Drop Point	40	45° 16.627' N	115° 31.701' W
Helispot	H-1	45° 14.609' N	115° 31.637' W
Helispot	H-2	45° 16.078' N	115° 31.850' W
Helispot	H-3	45° 17.268' N	115° 30.903' W
Helispot	H-4	45° 16.708' N	115° 33.330' W
Sling Site	Rooster Sling	45° 18.565' N	115° 29.381' W



FRANK CHURCH RIVER OF NO RETURN WILDERNESS

8/24/2022 0839
Acres from IR 45

North American 1983 Datum, Lat/Long Grid