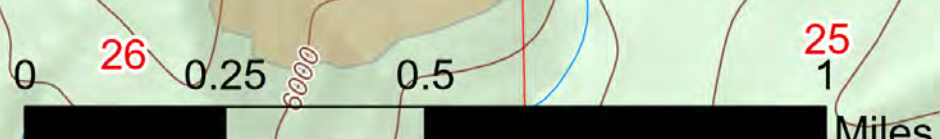


Operations

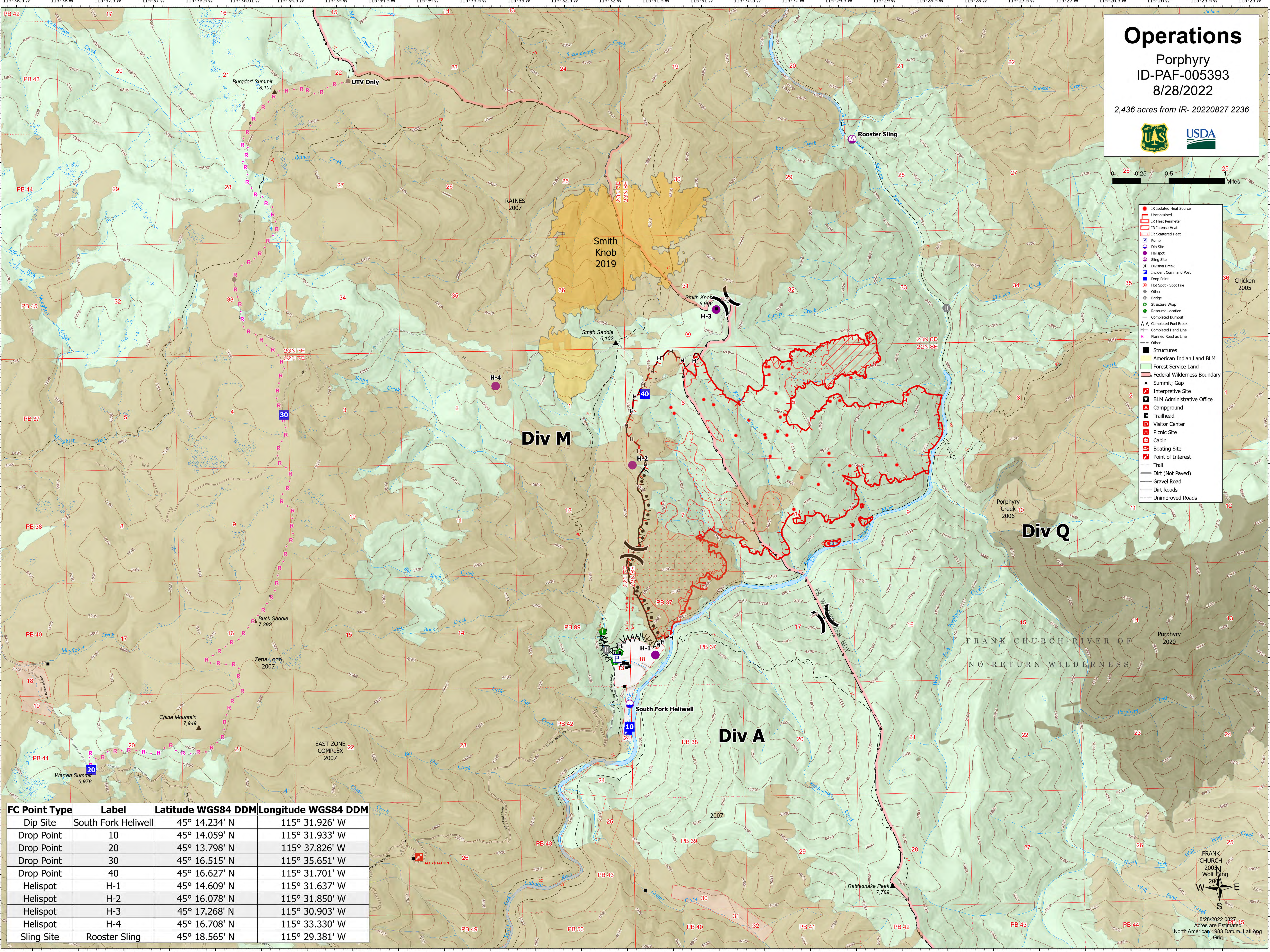
Porphyry
ID-PAF-005393
8/28/2022

2,436 acres from IR- 20220827 2236



- IR Isolated Heat Source Uncontained
- IR Heat Perimeter
- IR Intense Heat
- IR Scattered Heat
- Pump
- Dip Site
- Helispot
- Sling Site
- Division Break
- Incident Command Post
- Drop Point
- Hot Spot - Spot Fire
- Other
- Bridge
- Structure Wrap
- Resource Location
- Completed Burnout
- Completed Fuel Break
- Completed Hand Line
- Planned Road as Line
- Other
- Structures
- American Indian Land BLM
- Forest Service Land
- Federal Wilderness Boundary
- ▲ Summit; Gap
- ▲ Interpretive Site
- ▲ BLM Administrative Office
- ▲ Campground
- ▲ Trailhead
- ▲ Visitor Center
- ▲ Picnic Site
- ▲ Cabin
- ▲ Boating Site
- ▲ Point of Interest
- Trail
- Dirt (Not Paved)
- Gravel Road
- Dirt Roads
- Unimproved Roads

FC Point Type	Label	Latitude WGS84 DDM	Longitude WGS84 DDM
Dip Site	South Fork Heliwell	45° 14.234' N	115° 31.926' W
Drop Point	10	45° 14.059' N	115° 31.933' W
Drop Point	20	45° 13.798' N	115° 37.826' W
Drop Point	30	45° 16.515' N	115° 35.651' W
Drop Point	40	45° 16.627' N	115° 31.701' W
Helispot	H-1	45° 14.609' N	115° 31.637' W
Helispot	H-2	45° 16.078' N	115° 31.850' W
Helispot	H-3	45° 17.268' N	115° 30.903' W
Helispot	H-4	45° 16.708' N	115° 33.330' W
Sling Site	Rooster Sling	45° 18.565' N	115° 29.381' W



FRANK CHURCH RIVER OF NO RETURN WILDERNESS

FRANK CHURCH 2000N Wolf Fang 2014

8/28/2022 0827
Acres are Estimated
North American 1983 Datum, Lat/Long Grid