

# Operations

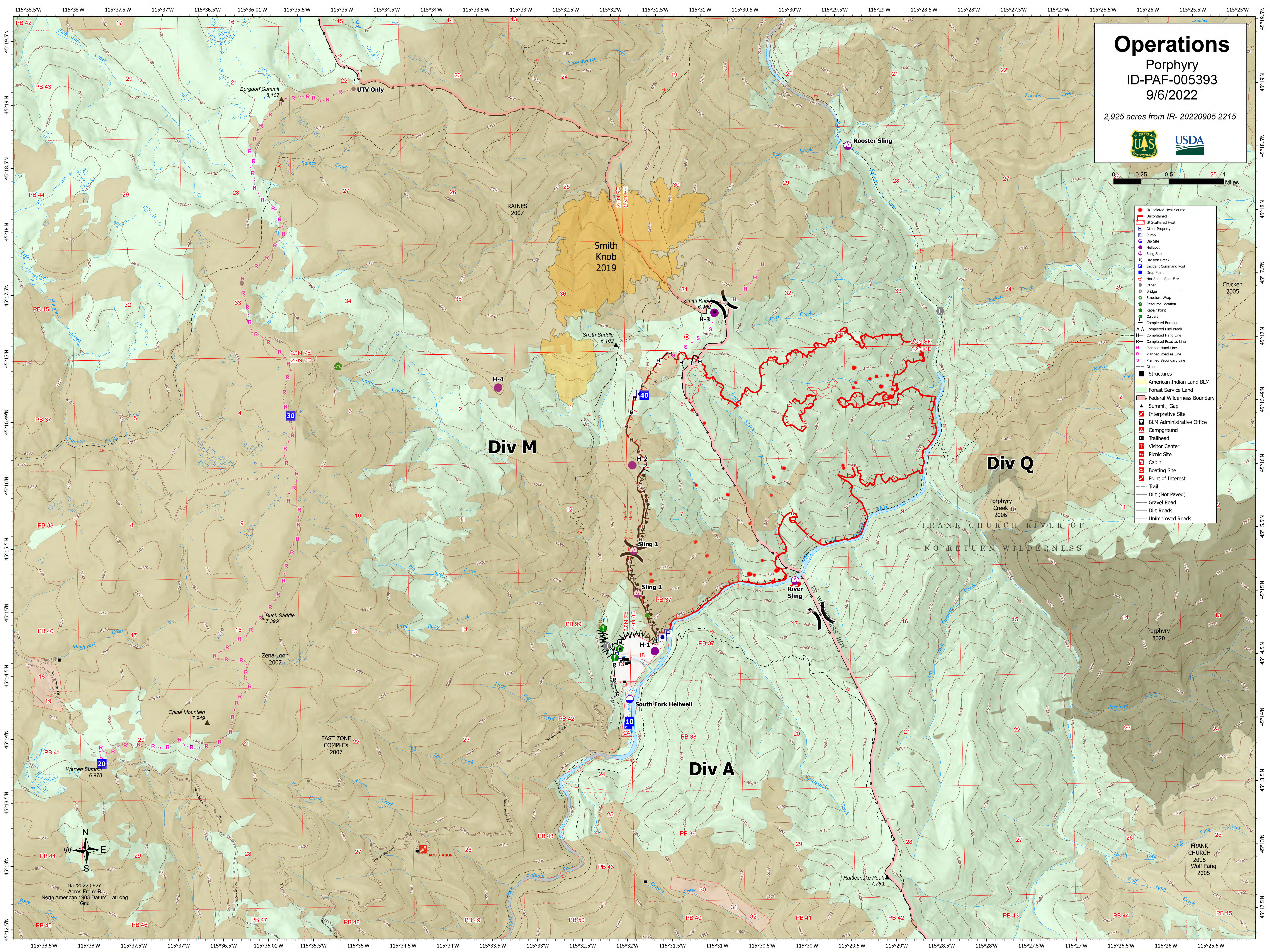
Porphyry  
ID-PAF-005393  
9/6/2022

2,925 acres from IR- 20220905 2215



0.6 0.25 0.5 2.5 1 Miles

- IR Isolated Heat Source
- IR Uncaptured
- IR Scattered Heat
- Other Property
- Dip Site
- Haltspot
- Sling Site
- Division Break
- Incident Command Post
- Drop Point
- Hot Spot - Spot Fire
- Camp
- Bridge
- Structure Wrap
- Resource Location
- Repair Point
- Culvert
- Completed Burnout
- Completed Fuel Break
- Completed Hand Line
- Completed Road as Line
- Planned Hand Line
- Planned Road as Line
- Planned Secondary Line
- Other
- Structures
- American Indian Land BLM
- Forest Service Land
- Federal Wilderness Boundary
- Summit, Gap
- Interpretive Site
- BLM Administrative Office
- Campground
- Trailhead
- Visitor Center
- Picnic Site
- Cabin
- Boating Site
- Point of Interest
- Trail
- Dirt (Not Paved)
- Gravel Road
- Dirt Roads
- Unimproved Roads



Div M

Div Q

Div A

FRANK CHURCH-RIVER OF NO RETURN WILDERNESS



9/6/2022 0827  
Acres From IR  
North American 1983 Datum, Lat/Long  
Grid