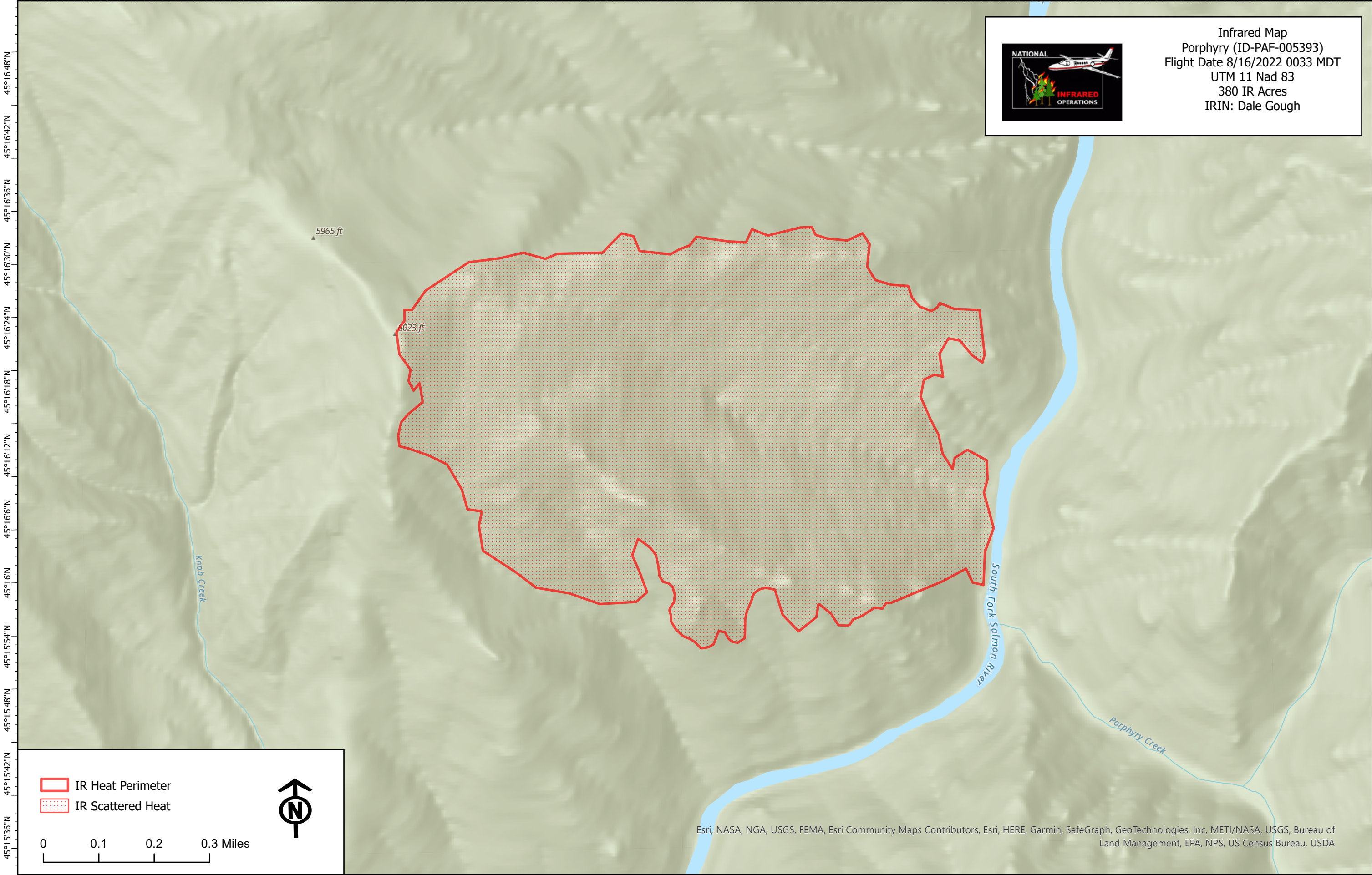






115°30'42"W 115°30'30"W 115°30'18"W 115°30'6"W 115°30"W 115°29'54"W 115°29'42"W 115°29'30"W 115°29'18"W 115°29'6"W 115°29"W 115°28'54"W 115°28'42"W 115°28'30"W 115°28'18"W 115°28'6"W 115°28"W 115°27'54"W

Infrared Map
 Porphyry (ID-PAF-005393)
 Flight Date 8/16/2022 0033 MDT
 UTM 11 Nad 83
 380 IR Acres
 IRIN: Dale Gough

 IR Heat Perimeter
 IR Scattered Heat



0 0.1 0.2 0.3 Miles

Esri, NASA, NGA, USGS, FEMA, Esri Community Maps Contributors, Esri, HERE, Garmin, SafeGraph, GeoTechnologies, Inc, METI/NASA, USGS, Bureau of Land Management, EPA, NPS, US Census Bureau, USDA

115°30'42"W 115°30'30"W 115°30'18"W 115°30'6"W 115°30"W 115°29'54"W 115°29'42"W 115°29'30"W 115°29'18"W 115°29'6"W 115°29"W 115°28'54"W 115°28'42"W 115°28'30"W 115°28'18"W 115°28'6"W 115°28"W 115°27'54"W