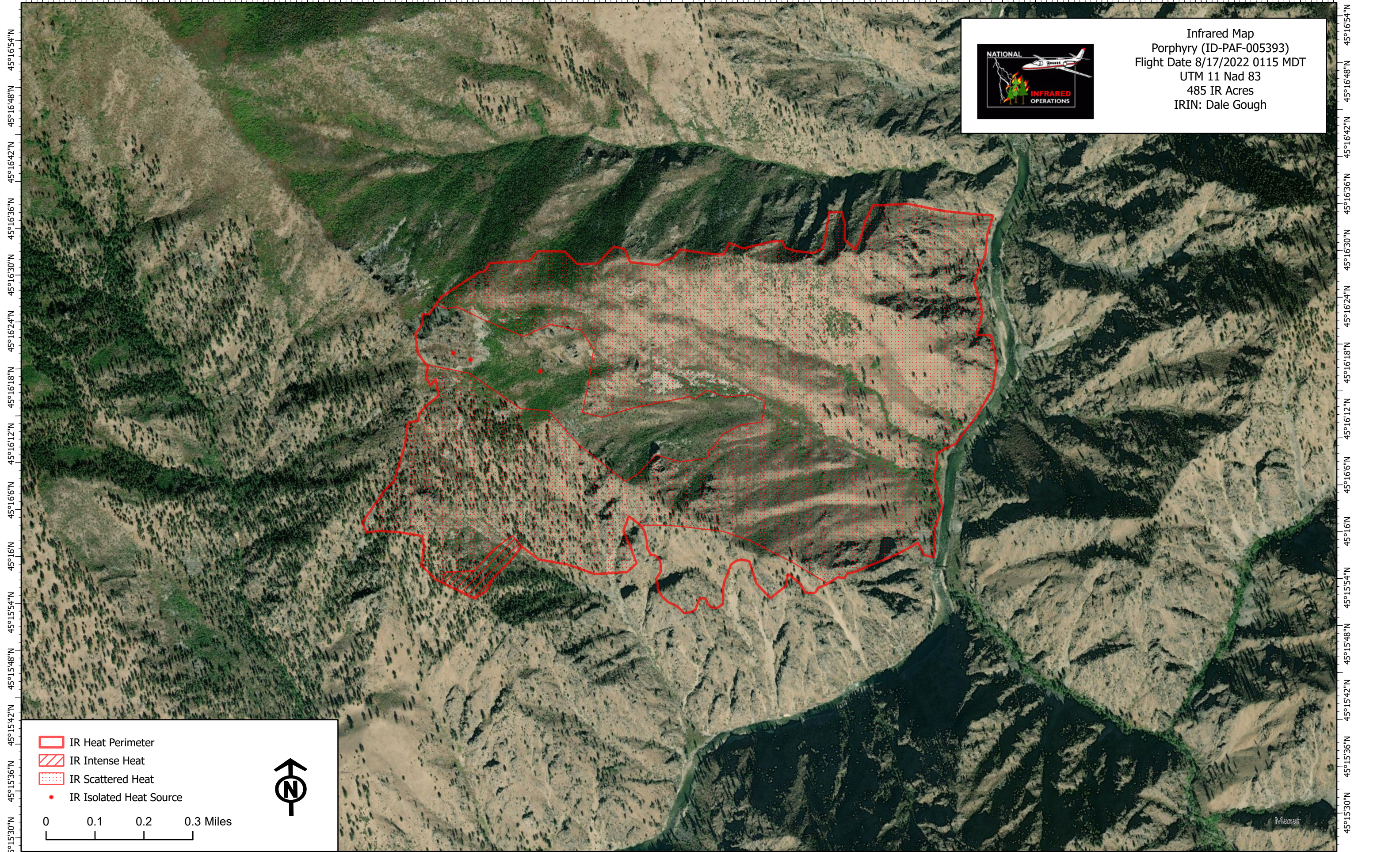







115°30'48"W 115°30'36"W 115°30'24"W 115°30'12"W 115°30'W 115°29'48"W 115°29'36"W 115°29'24"W 115°29'12"W 115°29'W 115°28'48"W 115°28'36"W 115°28'24"W 115°28'12"W 115°28'W 115°27'48"W 115°27'36"W




**Infrared Map**  
 Porphyry (ID-PAF-005393)  
 Flight Date 8/17/2022 0115 MDT  
 UTM 11 Nad 83  
 485 IR Acres  
 IRIN: Dale Gough



-  IR Heat Perimeter
-  IR Intense Heat
-  IR Scattered Heat
-  IR Isolated Heat Source

0 0.1 0.2 0.3 Miles



115°30'54"W 115°30'42"W 115°30'30"W 115°30'18"W 115°30'6"W 115°30'W 115°29'48"W 115°29'36"W 115°29'24"W 115°29'12"W 115°29'W 115°28'48"W 115°28'36"W 115°28'24"W 115°28'12"W 115°28'W 115°27'48"W

Maxar