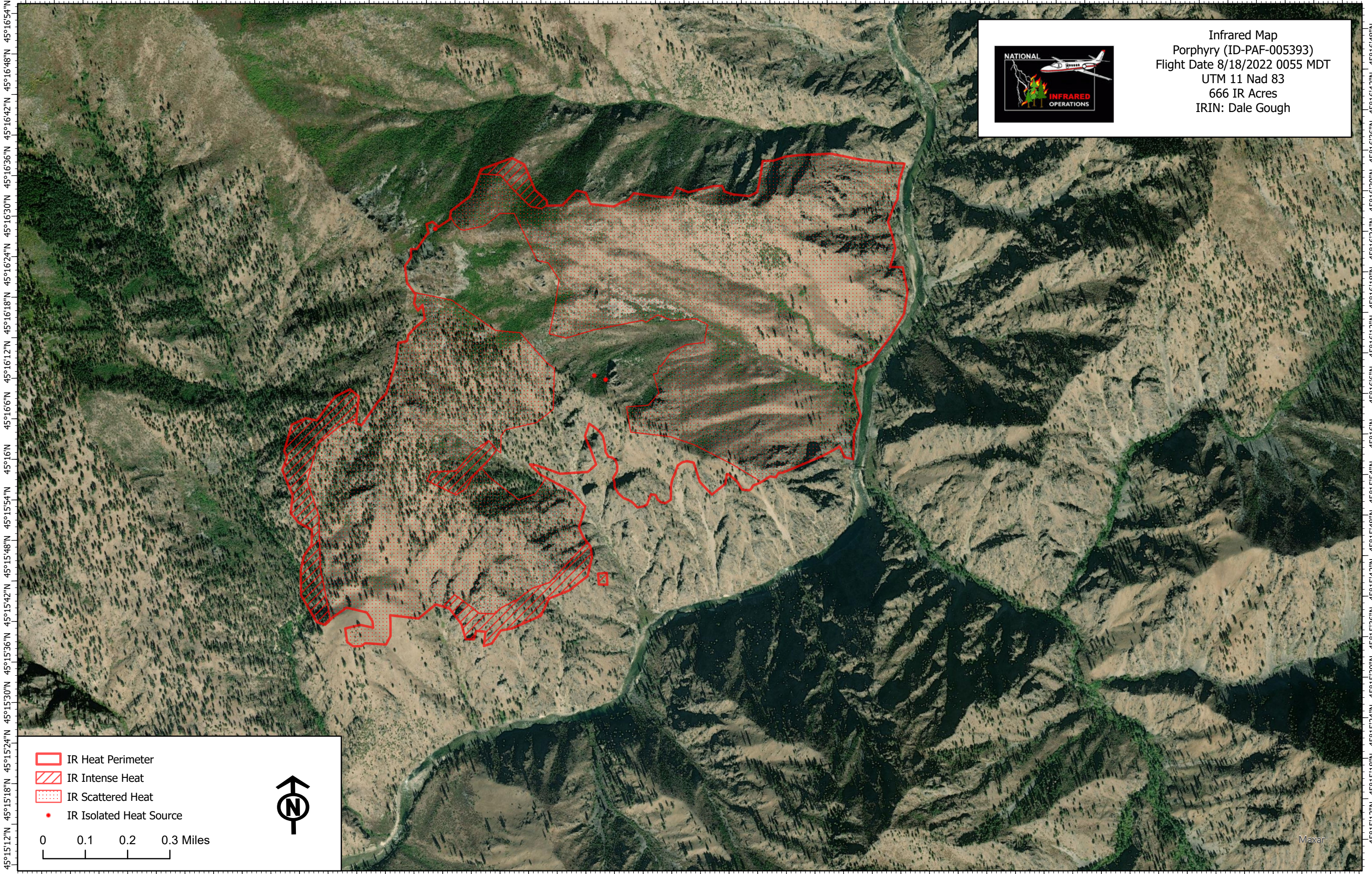







115°31'W 115°30'48"W 115°30'36"W 115°30'24"W 115°30'12"W 115°30'W 115°29'48"W 115°29'36"W 115°29'24"W 115°29'12"W 115°29'W 115°28'48"W 115°28'36"W 115°28'24"W 115°28'12"W 115°28'W 115°27'48"W 115°27'36"W 115°27'24"W 115°27'12"W





Infrared Map
 Porphyry (ID-PAF-005393)
 Flight Date 8/18/2022 0055 MDT
 UTM 11 Nad 83
 666 IR Acres
 IRIN: Dale Gough

-  IR Heat Perimeter
-  IR Intense Heat
-  IR Scattered Heat
-  IR Isolated Heat Source



0 0.1 0.2 0.3 Miles



115°31'W 115°30'48"W 115°30'36"W 115°30'24"W 115°30'12"W 115°30'W 115°29'48"W 115°29'36"W 115°29'24"W 115°29'12"W 115°29'W 115°28'48"W 115°28'36"W 115°28'24"W 115°28'12"W 115°28'W 115°27'48"W 115°27'36"W 115°27'24"W 115°27'12"W

45°15'12"N 45°15'18"N 45°15'24"N 45°15'30"N 45°15'36"N 45°15'42"N 45°15'48"N 45°15'54"N 45°16'N 45°16'6"N 45°16'12"N 45°16'18"N 45°16'24"N 45°16'30"N 45°16'36"N 45°16'42"N 45°16'48"N 45°16'54"N

Maxar