

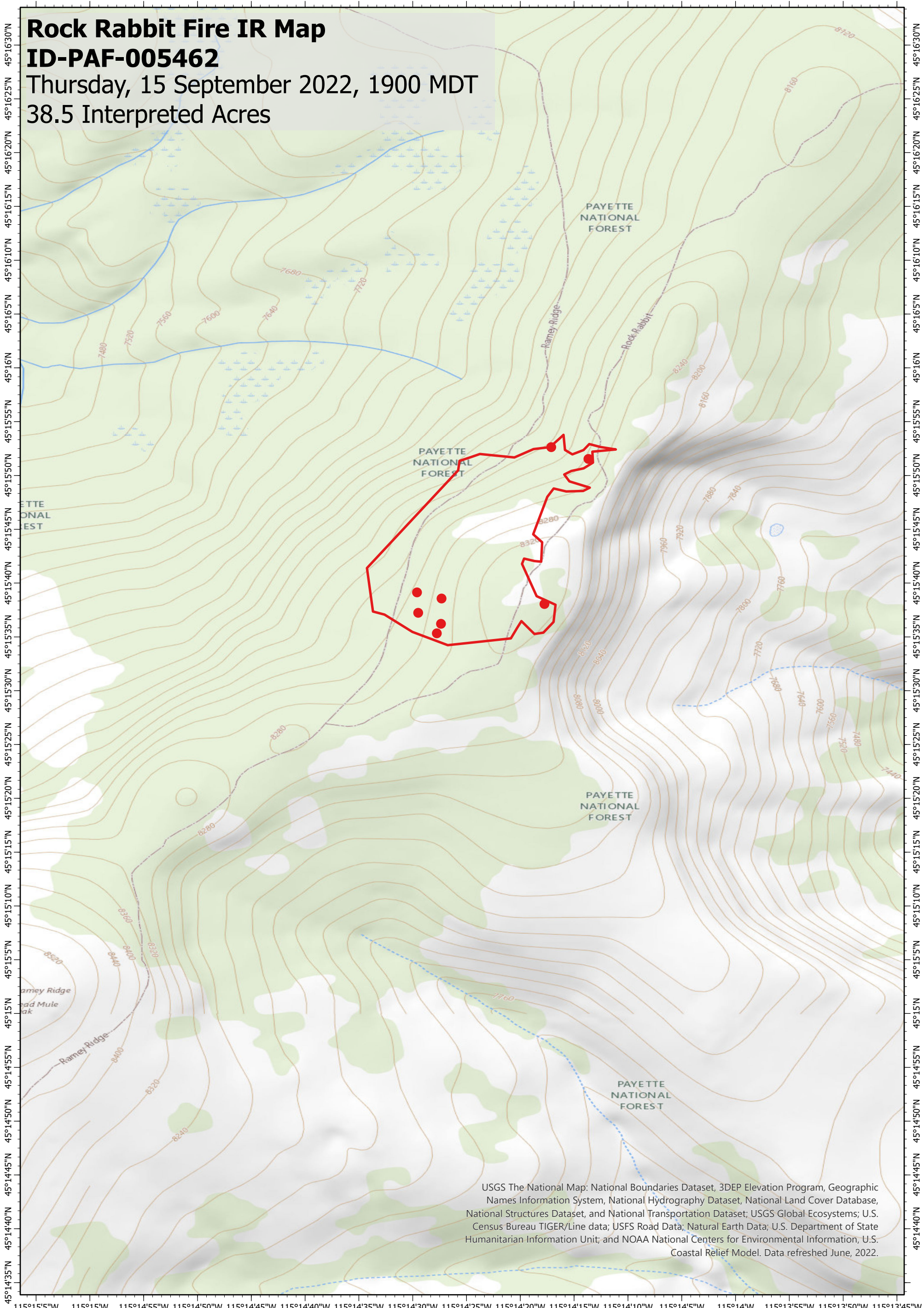
115°15'5"W 115°15'W 115°14'55"W 115°14'50"W 115°14'45"W 115°14'40"W 115°14'35"W 115°14'30"W 115°14'25"W 115°14'20"W 115°14'15"W 115°14'10"W 115°14'5"W 115°14'W 115°13'55"W 115°13'50"W 115°13'45"W

# Rock Rabbit Fire IR Map

## ID-PAF-005462

Thursday, 15 September 2022, 1900 MDT

38.5 Interpreted Acres



USGS The National Map: National Boundaries Dataset, 3DEP Elevation Program, Geographic Names Information System, National Hydrography Dataset, National Land Cover Database, National Structures Dataset, and National Transportation Dataset; USGS Global Ecosystems; U.S. Census Bureau TIGER/Line data; USFS Road Data; Natural Earth Data; U.S. Department of State Humanitarian Information Unit; and NOAA National Centers for Environmental Information, U.S. Coastal Relief Model. Data refreshed June, 2022.

### Legend

- Isolated Heat
- Burn Perimeter

Scale: 1:10,000

Projection: WGS 1984

Produced by: Owyhee Air Research, LLC

IR Interpreter: C. Bogard

Contact: [gis@owyheear.com](mailto:gis@owyheear.com) (208) 442-5405

