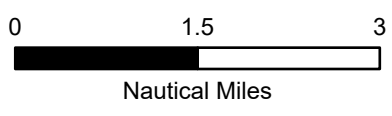
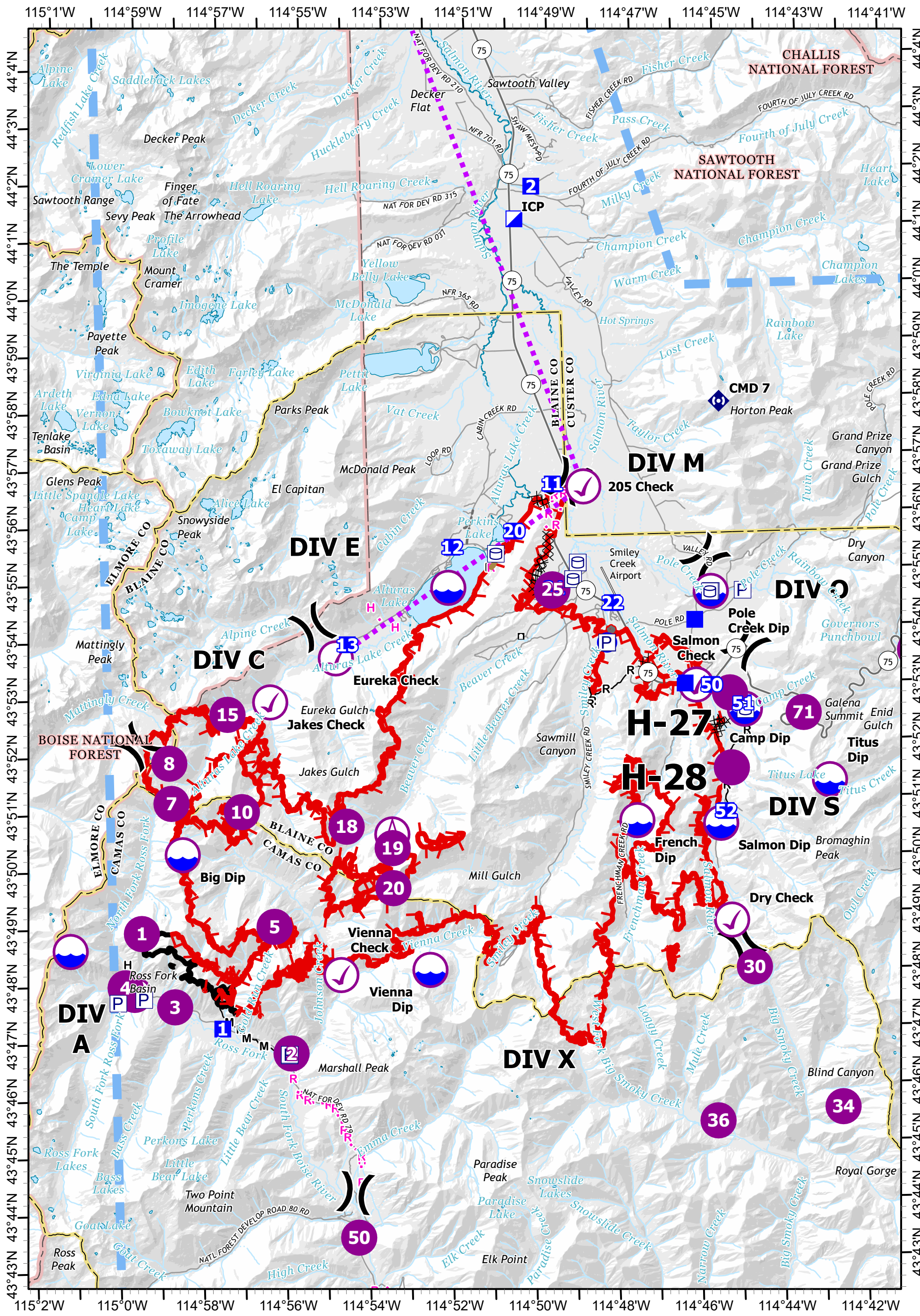


Pilot Map

Ross Fork

Operations IDSTF000193 10 Sep 2022 35699 acres



- Aviation Check Point
- Drop Point
- Complex
- Dip Site
- Camp
- Local Connector
- Helispot
- Repeater
- Local Road
- Sling Site
- Water Source
- Runway
- Division Break
- Contained
- Uncontained
- Incident Command Post

Area as of 9/9/22, 2121 Hrs



NAD 1983 UTM Zone 11N

dlachman
9/10/2022, 0627 hrs
AirOps_2022_RossFork_2022_IDSTF000193

FC Point Type	Label	Latitude WGS84 DDM	Longitude WGS84 DDM
Helispot	2	43° 46.752' N	114° 55.777' W
Helispot	3	43° 47.608' N	114° 58.552' W
Helispot	5	43° 48.970' N	114° 56.109' W
Helispot	19	43° 50.293' N	114° 53.216' W
Sling Site		43° 50.532' N	114° 53.215' W
Helispot	20	43° 49.594' N	114° 53.221' W
Helispot	10	43° 50.987' N	114° 56.830' W
Dip Site		43° 48.618' N	115° 01.037' W
Drop Point	1	43° 47.208' N	114° 57.418' W
Helispot	1	43° 48.902' N	114° 59.310' W
Helispot	18	43° 50.688' N	114° 54.312' W
Drop Point	2	44° 01.785' N	114° 49.467' W
Helispot	50	43° 43.508' N	114° 54.260' W
Repeater	CMD 8	43° 49.689' N	114° 53.302' W
Camp	Bear Creek Spike	43° 43.568' N	114° 54.266' W
Sling Site		43° 54.715' N	114° 49.214' W
Helispot	25	43° 54.738' N	114° 49.202' W
Incident Command Post	ICP	44° 01.222' N	114° 49.896' W
Division Break	DIV A/X	43° 44.288' N	114° 54.318' W
Division Break	DIV M/S	43° 55.213' N	114° 45.499' W
Division Break	DIV C/E	43° 54.185' N	114° 55.020' W
Division Break	DIV A/C	43° 52.175' N	114° 59.339' W
Helispot	7	43° 51.161' N	114° 58.522' W
Helispot	8	43° 51.864' N	114° 58.551' W
Repeater	CMD 7	43° 57.952' N	114° 45.068' W
Sling Site		43° 47.843' N	114° 59.519' W
Helispot	15	43° 52.692' N	114° 57.118' W
Drop Point	11	43° 56.577' N	114° 49.138' W
Drop Point	13	43° 53.863' N	114° 54.186' W
Drop Point	12	43° 55.519' N	114° 51.598' W
Water Source		43° 53.786' N	114° 47.916' W
Drop Point	20	43° 55.772' N	114° 50.091' W
Drop Point	21	43° 54.763' N	114° 49.159' W
Drop Point	22	43° 54.478' N	114° 47.764' W
Dip Site		43° 54.812' N	114° 51.713' W
Helispot	4	43° 47.963' N	114° 59.736' W
Division Break	DIV E/M	43° 56.618' N	114° 48.734' W
Division Break	DIV O/S	43° 53.666' N	114° 44.569' W
Division Break	DIV S/X	43° 48.491' N	114° 44.856' W
Drop Point	50	43° 53.004' N	114° 45.421' W
Drop Point	51	43° 52.668' N	114° 44.672' W
Drop Point	52	43° 50.796' N	114° 45.154' W
Aviation Check Point	205 Check	43° 56.520' N	114° 48.391' W
Aviation Check Point	Salmon Check	43° 53.010' N	114° 45.791' W
Aviation Check Point	Dry Check	43° 48.890' N	114° 45.081' W
Aviation Check Point	Vienna Check	43° 48.100' N	114° 54.531' W
Aviation Check Point	Jakes Check	43° 52.890' N	114° 56.081' W
Aviation Check Point	Eureka Check	43° 53.630' N	114° 54.471' W
Dip Site	Vienna Dip	43° 48.150' N	114° 52.381' W
Dip Site	Big Dip	43° 50.260' N	114° 58.281' W
Helibase		44° 12.514' N	114° 56.072' W
Dip Site	French Dip	43° 50.670' N	114° 47.300' W
Dip Site	Pole Creek Dip	43° 54.637' N	114° 45.380' W
Drop Point		43° 53.042' N	114° 46.059' W
Drop Point		43° 54.148' N	114° 45.786' W
Dip Site	Salmon Dip	43° 50.585' N	114° 45.281' W
Repeater	CMD 9	43° 52.414' N	114° 43.214' W
Helispot	36	43° 45.392' N	114° 45.539' W
Helispot	34	43° 45.580' N	114° 42.521' W
Helispot	30	43° 48.062' N	114° 44.563' W
Helispot	71	43° 52.480' N	114° 43.219' W
Helispot	70	43° 53.520' N	114° 40.491' W
Helispot	H-27	43° 52.857' N	114° 44.983' W
Dip Site	Camp Dip	43° 52.565' N	114° 44.635' W
Helispot	H-28	43° 51.548' N	114° 44.988' W
Dip Site	Big Wood Dip	43° 49.520' N	114° 36.930' W
Dip Site	Silver Dip	43° 47.550' N	114° 34.440' W
Dip Site	Titus Dip	43° 51.294' N	114° 42.630' W