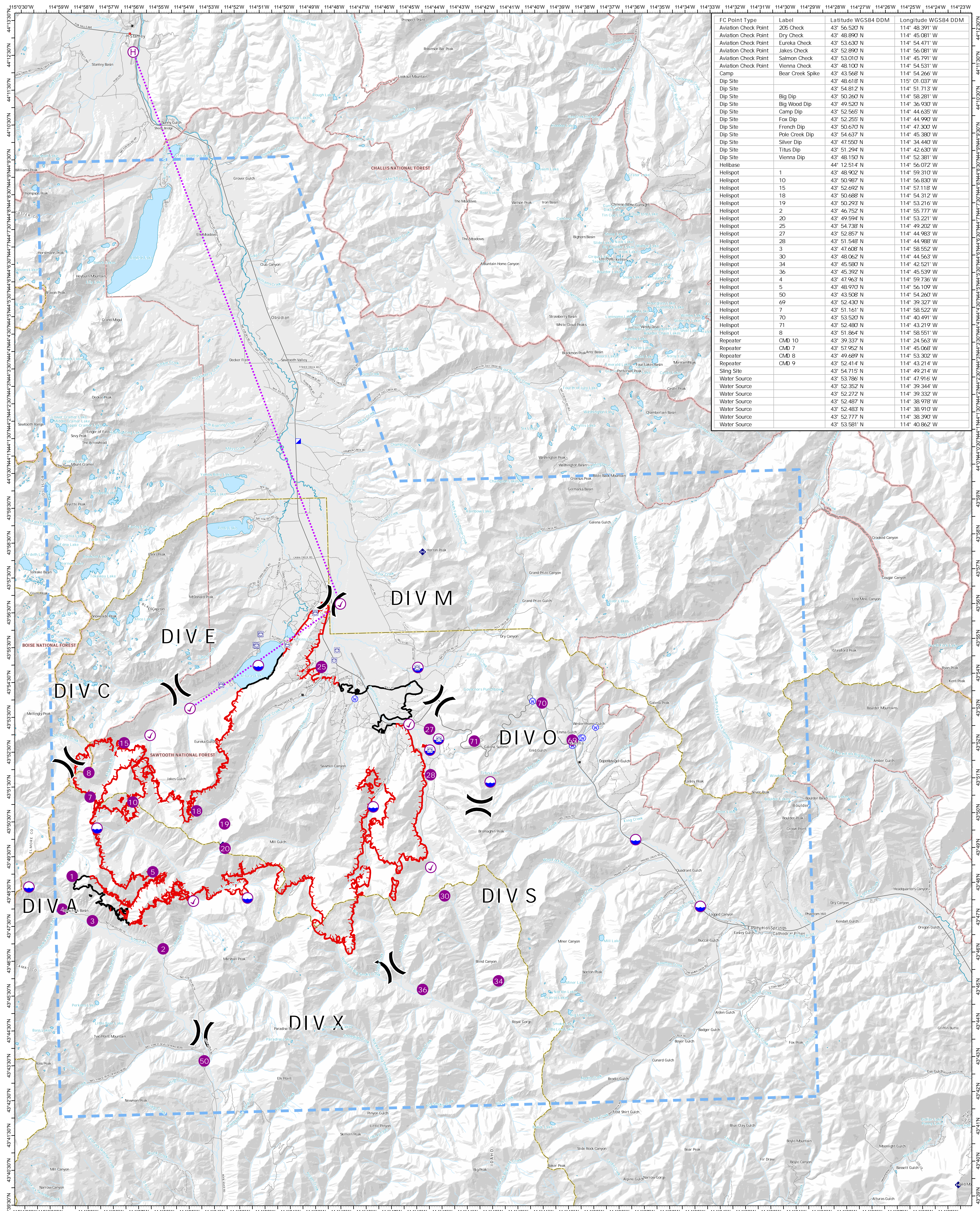



Air Operations

Ross Fork

Operations IDSTF000193 13 Sep 2022 37,612 acres



FC Point Type	Label	Latitude WGS84 DDM	Longitude WGS84 DDM
Aviation Check Point	205 Check	43° 56' 520" N	114° 48' 391" W
Aviation Check Point	Dry Check	43° 48' 890" N	114° 45' 081" W
Aviation Check Point	Eureka Check	43° 53' 630" N	114° 54' 471" W
Aviation Check Point	Jakes Check	43° 52' 890" N	114° 56' 081" W
Aviation Check Point	Salmon Check	43° 53' 010" N	114° 45' 791" W
Aviation Check Point	Vienna Check	43° 48' 100" N	114° 54' 531" W
Camp	Bear Creek Spike	43° 43' 568" N	114° 54' 266" W
Dip Site		43° 48' 618" N	115° 01' 037" W
Dip Site		43° 54' 812" N	114° 51' 713" W
Dip Site	Big Dip	43° 50' 260" N	114° 58' 281" W
Dip Site	Big Wood Dip	43° 49' 520" N	114° 36' 930" W
Dip Site	Camp Dip	43° 52' 565" N	114° 44' 635" W
Dip Site	Fox Dip	43° 52' 255" N	114° 44' 990" W
Dip Site	French Dip	43° 50' 670" N	114° 47' 300" W
Dip Site	Pole Creek Dip	43° 54' 637" N	114° 45' 380" W
Dip Site	Silver Dip	43° 47' 550" N	114° 34' 440" W
Dip Site	Titus Dip	43° 51' 294" N	114° 42' 630" W
Dip Site	Vienna Dip	43° 48' 150" N	114° 52' 381" W
Helibase		44° 12' 514" N	114° 56' 072" W
Helibase	1	43° 48' 902" N	114° 59' 310" W
Helibase	10	43° 50' 987" N	114° 56' 830" W
Helibase	15	43° 52' 692" N	114° 57' 118" W
Helibase	18	43° 50' 688" N	114° 54' 312" W
Helibase	19	43° 50' 293" N	114° 53' 216" W
Helibase	2	43° 46' 752" N	114° 55' 777" W
Helibase	20	43° 49' 594" N	114° 53' 221" W
Helibase	25	43° 54' 738" N	114° 49' 202" W
Helibase	27	43° 52' 857" N	114° 44' 983" W
Helibase	28	43° 51' 548" N	114° 44' 988" W
Helibase	3	43° 47' 608" N	114° 58' 552" W
Helibase	30	43° 48' 062" N	114° 44' 563" W
Helibase	34	43° 45' 392" N	114° 42' 521" W
Helibase	36	43° 45' 580" N	114° 45' 539" W
Helibase	4	43° 47' 963" N	114° 59' 736" W
Helibase	5	43° 48' 970" N	114° 56' 109" W
Helibase	50	43° 43' 508" N	114° 54' 260" W
Helibase	69	43° 52' 430" N	114° 39' 327" W
Helibase	7	43° 51' 161" N	114° 58' 522" W
Helibase	70	43° 53' 520" N	114° 40' 491" W
Helibase	71	43° 52' 480" N	114° 43' 219" W
Helibase	8	43° 51' 864" N	114° 58' 551" W
Repeater	CMD 10	43° 39' 337" N	114° 24' 563" W
Repeater	CMD 7	43° 57' 952" N	114° 45' 068" W
Repeater	CMD 8	43° 49' 689" N	114° 53' 302" W
Repeater	CMD 9	43° 52' 414" N	114° 43' 214" W
Sling Site		43° 54' 715" N	114° 49' 214" W
Water Source		43° 53' 786" N	114° 47' 916" W
Water Source		43° 52' 352" N	114° 39' 344" W
Water Source		43° 52' 272" N	114° 39' 332" W
Water Source		43° 52' 487" N	114° 38' 978" W
Water Source		43° 52' 483" N	114° 38' 910" W
Water Source		43° 52' 777" N	114° 38' 390" W
Water Source		43° 53' 581" N	114° 40' 862" W



0 1 2 3
Nautical Miles
Area as of 9/12/22 2043 Hrs

Water Tank	Helibase	Camp
Aviation Check Point	Sling Site	Repeater
Dip Site	Division Break	Water Source
Helispot	Incident Command Post	Runway

Perennial Stream
 Perennial Lake



North American 1983 Datum, Laidong Dist
mpgdback
9/13/2022 0700 Hrs
AirOps_2022_RossFork_2022_IDSTF000193