

Pumps
Ross Fork
IDSTF000193

37,775 acres
as of 9/14/22, 2107 Hrs

Index Map



	Pump
	Division Break
	Contained
	Uncontained
	Local Connector
	Local Road
	4WD

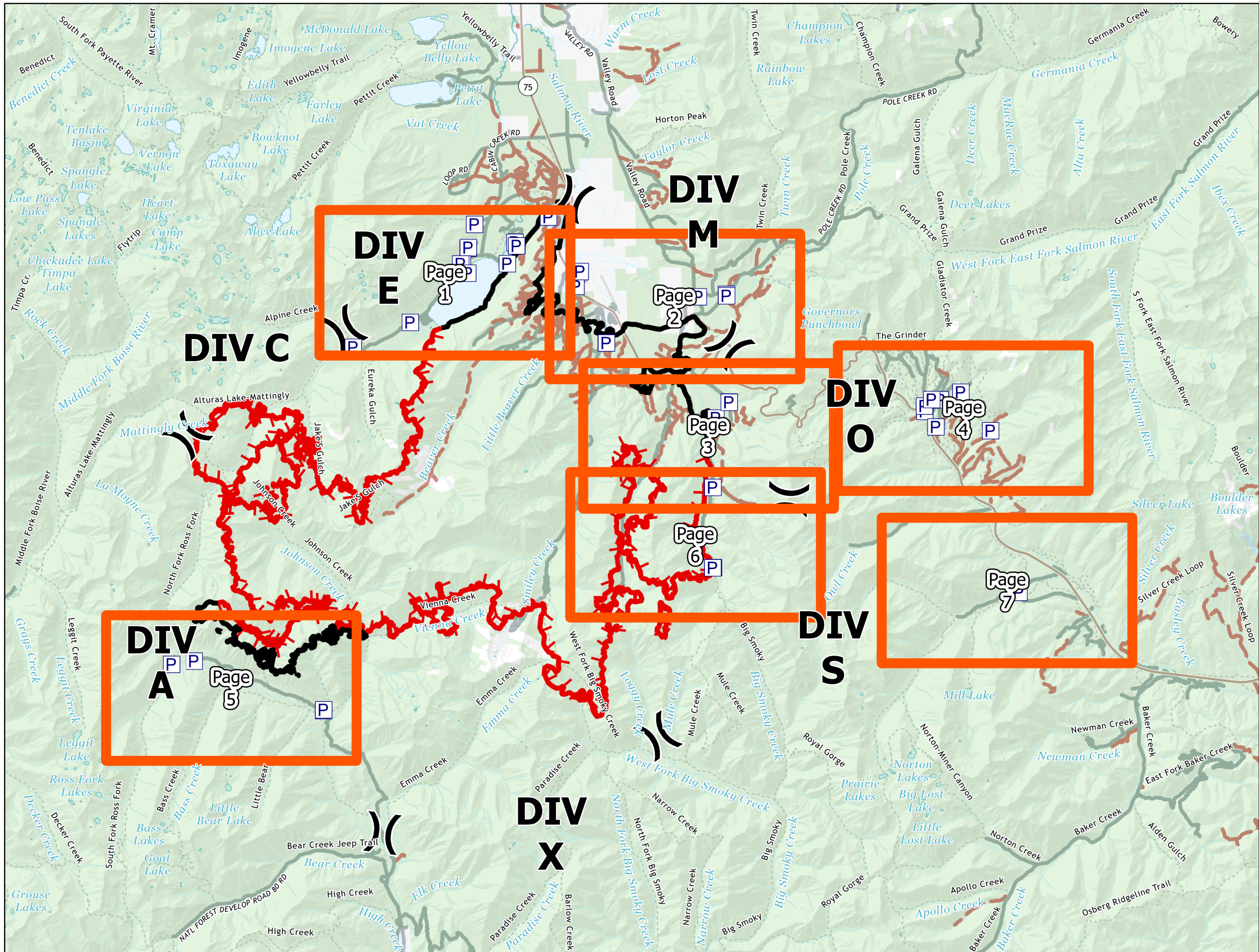


NAD 1983 UTM Zone 11N

dlachman
9/16/2022, 1411 hrs
ops_pumps_2022_RossFork_IDSTF000193



Miles

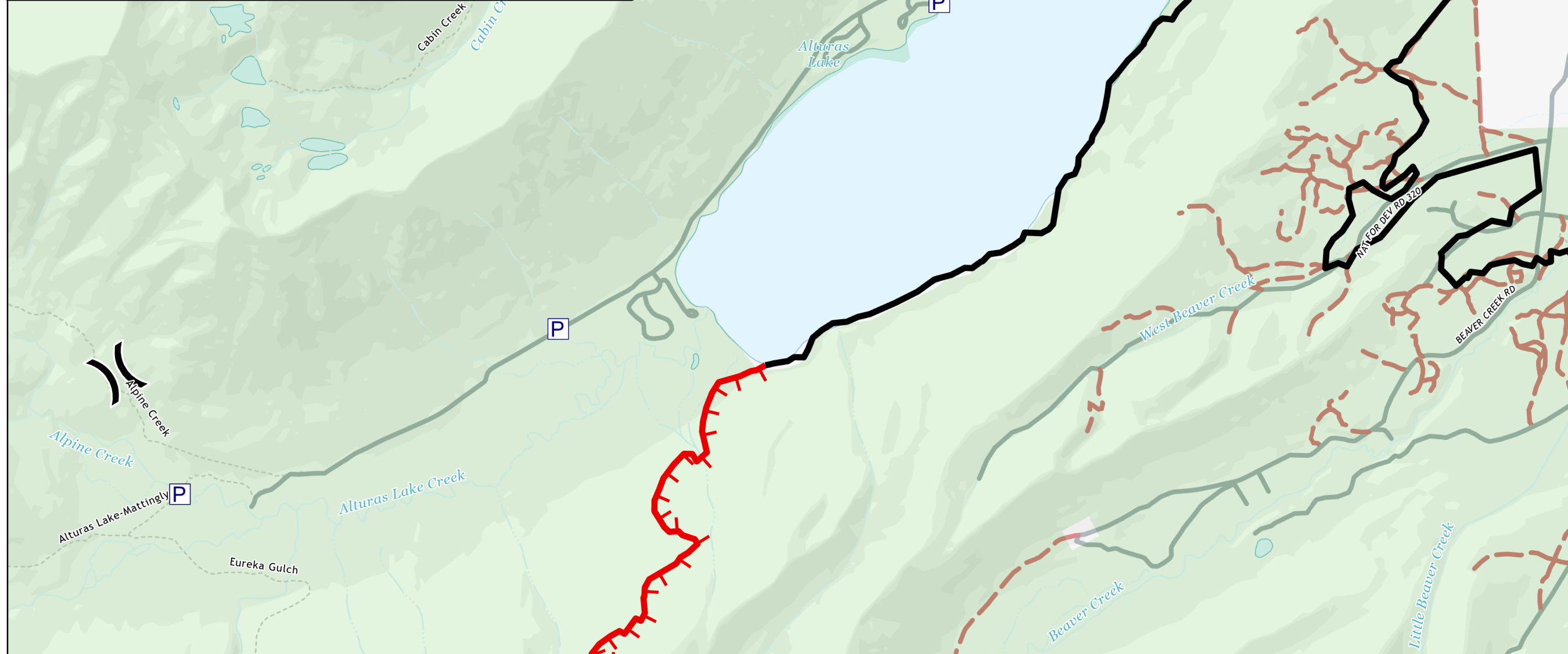


Pumps
Ross Fork
IDSTF000193

37,775 acres
as of 9/14/22, 2107 Hrs



Trackable ID	Serial Number	Latitude WGS84 DDM	Longitude WGS84 DDM
	GBK-0148-1636	43° 55.711' N	114° 51.595' W
	GBK-0148-1736	43° 55.714' N	114° 51.592' W
	GBK-0148-1616	43° 55.713' N	114° 51.592' W
	GBK-0148-596	43° 55.716' N	114° 51.590' W
	GBK-0148-674	43° 55.716' N	114° 51.589' W
	GBK-0148-774	43° 55.719' N	114° 51.589' W
	GBK-0148-1193	43° 55.720' N	114° 51.587' W
	GBK-1048-629	43° 55.379' N	114° 51.768' W
	GBK-0148-911	43° 55.404' N	114° 51.760' W
	GBK-0148-1652	43° 55.404' N	114° 51.806' W
	RMK-1222-89	43° 55.220' N	114° 51.621' W
	GBK-0148-1793	43° 55.386' N	114° 50.542' W
	GBK-0148-2125	43° 56.279' N	114° 49.393' W
	GBK-0148-2188	43° 55.802' N	114° 50.321' W
	GBK-0148-637	43° 55.801' N	114° 50.321' W
	GBK-0148-532	43° 54.284' N	114° 53.212' W
	GBK-0148-1185	43° 55.730' N	114° 50.271' W
	GBK-0148-916	43° 55.730' N	114° 50.277' W
	GBK-0148-1189	43° 56.171' N	114° 51.401' W
	GBK-0148-1609	43° 56.172' N	114° 51.401' W
GBK-0148-2052		43° 53.824' N	114° 54.774' W

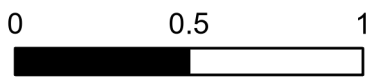


- Pump
- Division Break
- Contained
- Uncontained
- Local Connector
- Local Road
- 4WD



NAD 1983 UTM Zone 11N

dlachman
9/16/2022, 1335 hrs
ops_pumps_2022_RossFork_IDSTF000193



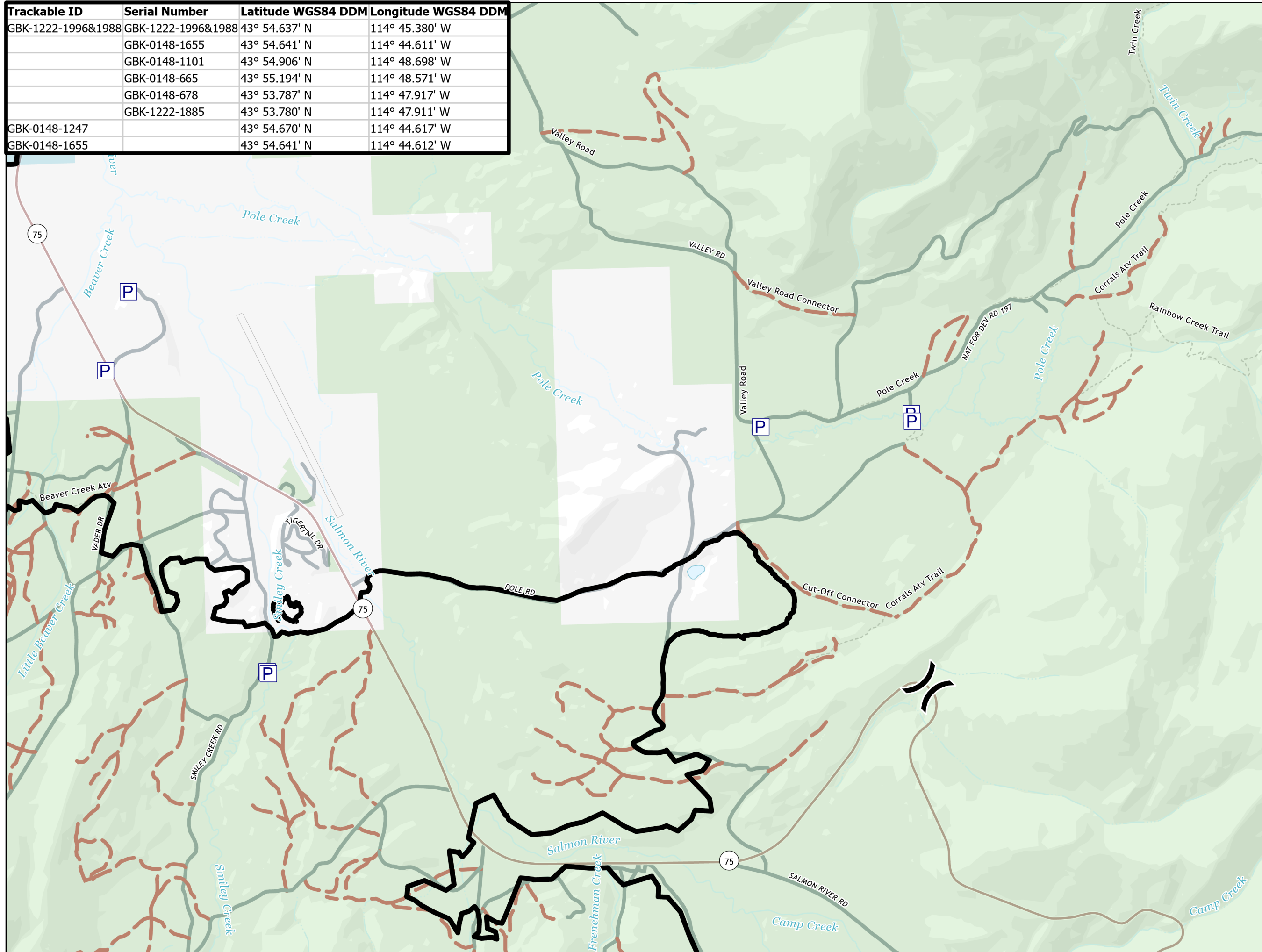
Miles

Pumps
Ross Fork
IDSTF000193

37,775 acres
as of 9/14/22, 2107 Hrs



Trackable ID	Serial Number	Latitude WGS84 DDM	Longitude WGS84 DDM
GBK-1222-1996&1988	GBK-1222-1996&1988	43° 54.637' N	114° 45.380' W
	GBK-0148-1655	43° 54.641' N	114° 44.611' W
	GBK-0148-1101	43° 54.906' N	114° 48.698' W
	GBK-0148-665	43° 55.194' N	114° 48.571' W
	GBK-0148-678	43° 53.787' N	114° 47.917' W
	GBK-1222-1885	43° 53.780' N	114° 47.911' W
GBK-0148-1247		43° 54.670' N	114° 44.617' W
GBK-0148-1655		43° 54.641' N	114° 44.612' W

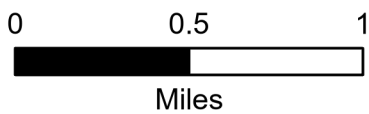


- P Pump
-) Division Break
- Contained
- Local Connector
- Local Road
- 4WD



NAD 1983 UTM Zone 11N

dlachman
9/16/2022, 1335 hrs
ops_pumps_2022_RossFork_IDSTF000193



Pumps
Ross Fork
IDSTF000193

37,775 acres
as of 9/14/22, 2107 Hrs



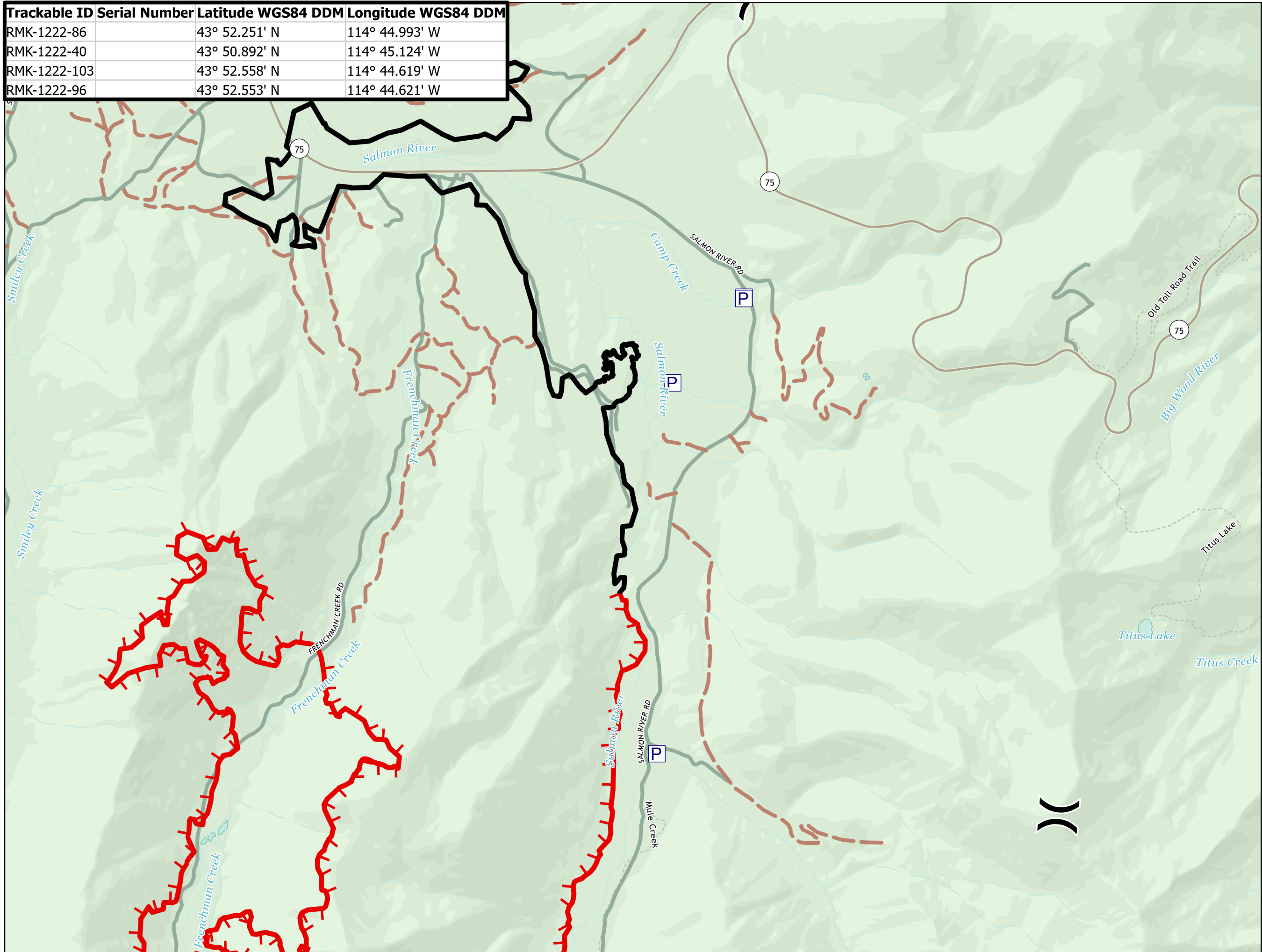
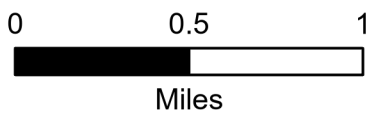
Trackable ID	Serial Number	Latitude WGS84 DDM	Longitude WGS84 DDM
RMK-1222-86		43° 52.251' N	114° 44.993' W
RMK-1222-40		43° 50.892' N	114° 45.124' W
RMK-1222-103		43° 52.558' N	114° 44.619' W
RMK-1222-96		43° 52.553' N	114° 44.621' W

	Pump
	Division Break
	Contained
	Uncontained
	Local Connector
	Local Road
	4WD



NAD 1983 UTM Zone 11N

dlachman
9/16/2022, 1335 hrs
ops_pumps_2022_RossFork_IDSTF000193

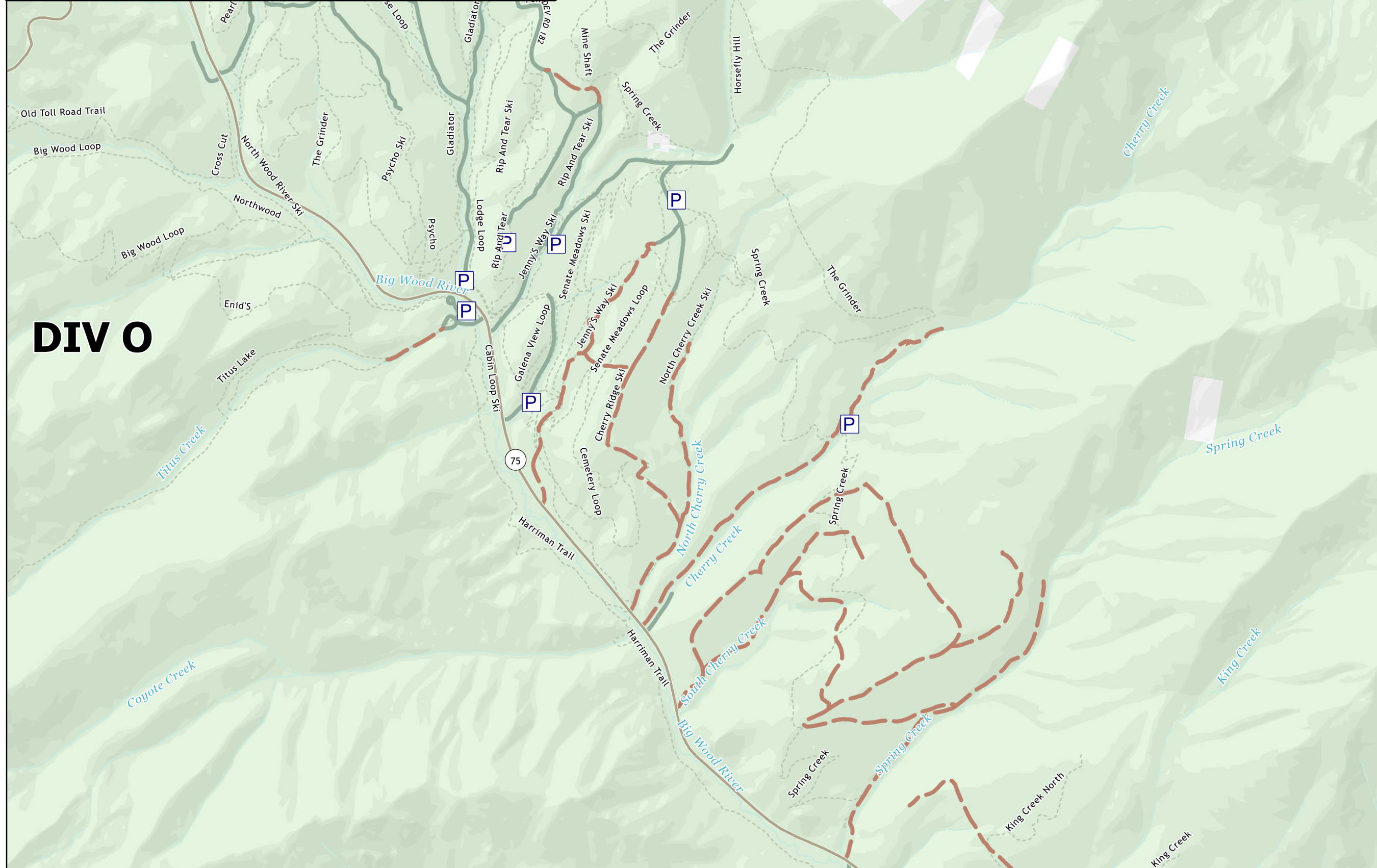


Pumps
Ross Fork
IDSTF000193

37,775 acres
as of 9/14/22, 2107 Hrs



Trackable ID	Serial Number	Latitude WGS84 DDM	Longitude WGS84 DDM
GBK-0148-791		43° 52.270' N	114° 39.336' W
GBK-0148-1106		43° 52.372' N	114° 39.343' W
	GBK-0148-1283	43° 51.853' N	114° 37.571' W
	GBK-0148-1765	43° 51.956' N	114° 39.047' W
GBK 0148 1235		43° 52.485' N	114° 38.911' W
GBK 0148 502		43° 52.495' N	114° 39.141' W
GBK 0148 2089		43° 52.622' N	114° 38.346' W



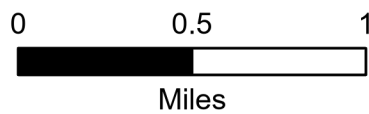
DIV O

P Pump
— Local Connector
— Local Road
— 4WD



NAD 1983 UTM Zone 11N

dlachman
9/16/2022, 1335 hrs
ops_pumps_2022_RossFork_IDSTF000193

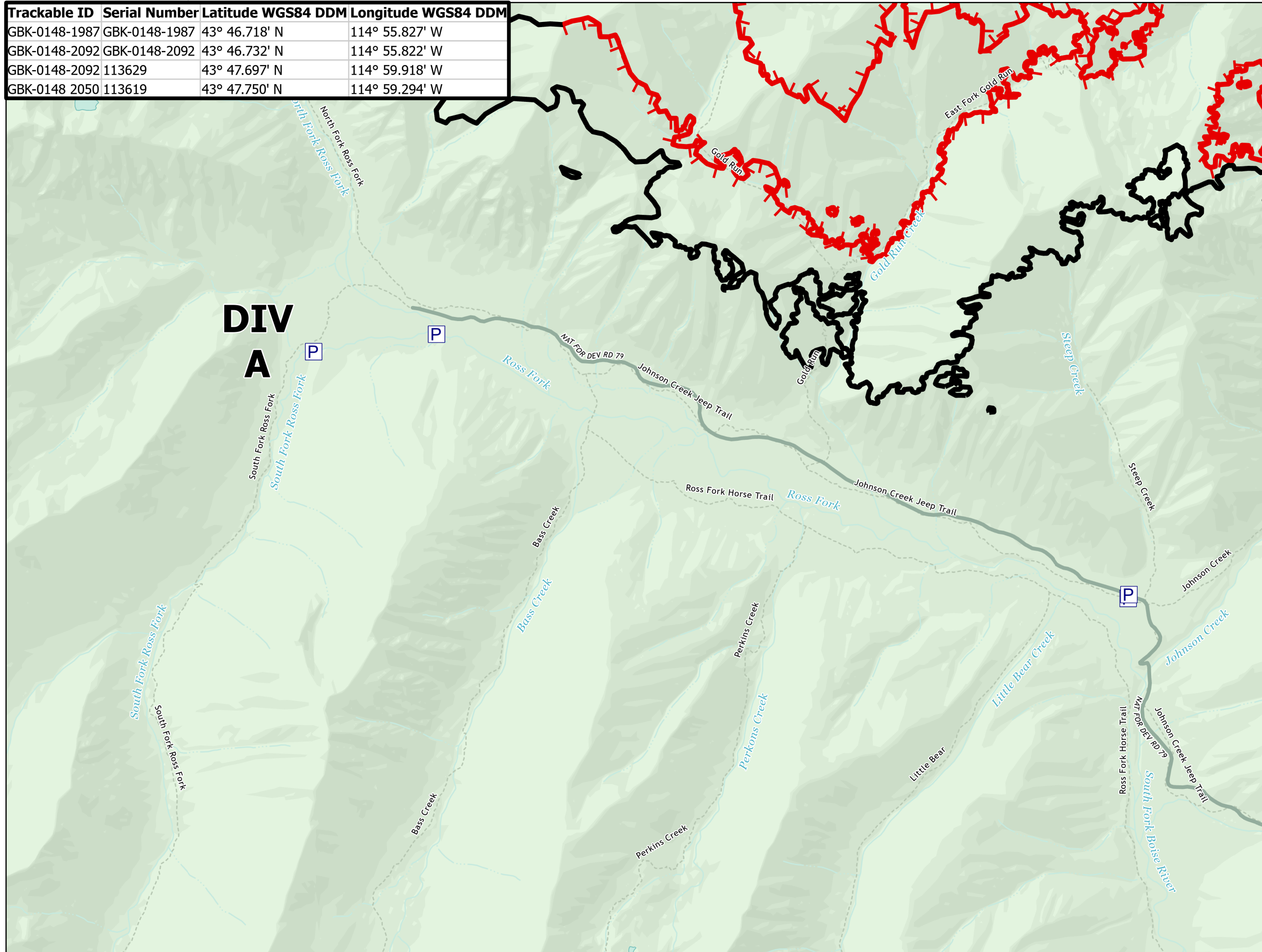


Pumps
Ross Fork
IDSTF000193

37,775 acres
as of 9/14/22, 2107 Hrs



Trackable ID	Serial Number	Latitude WGS84 DDM	Longitude WGS84 DDM
GBK-0148-1987	GBK-0148-1987	43° 46.718' N	114° 55.827' W
GBK-0148-2092	GBK-0148-2092	43° 46.732' N	114° 55.822' W
GBK-0148-2092	113629	43° 47.697' N	114° 59.918' W
GBK-0148 2050	113619	43° 47.750' N	114° 59.294' W



DIV
A

	Pump
	Contained
	Uncontained
	Local Road



NAD 1983 UTM Zone 11N

dlachman
9/16/2022, 1335 hrs
ops_pumps_2022_RossFork_IDSTF000193



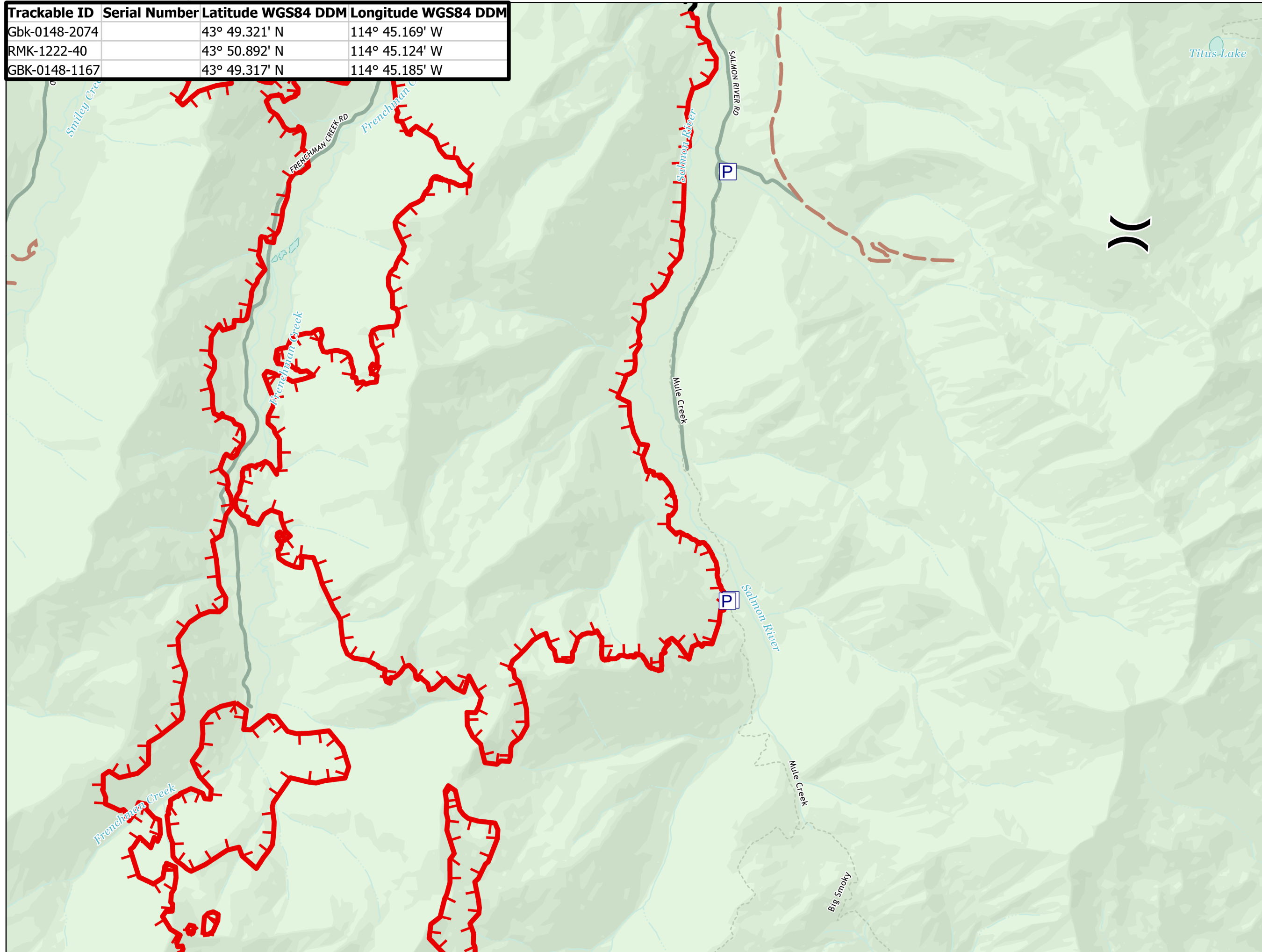
Miles

Pumps
Ross Fork
IDSTF000193

37,775 acres
as of 9/14/22, 2107 Hrs



Trackable ID	Serial Number	Latitude WGS84 DDM	Longitude WGS84 DDM
Gbk-0148-2074		43° 49.321' N	114° 45.169' W
RMK-1222-40		43° 50.892' N	114° 45.124' W
GBK-0148-1167		43° 49.317' N	114° 45.185' W

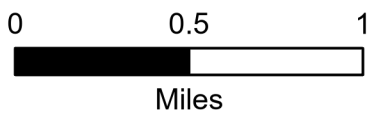


	Pump
	Division Break
	Contained
	Uncontained
	Local Road
	4WD

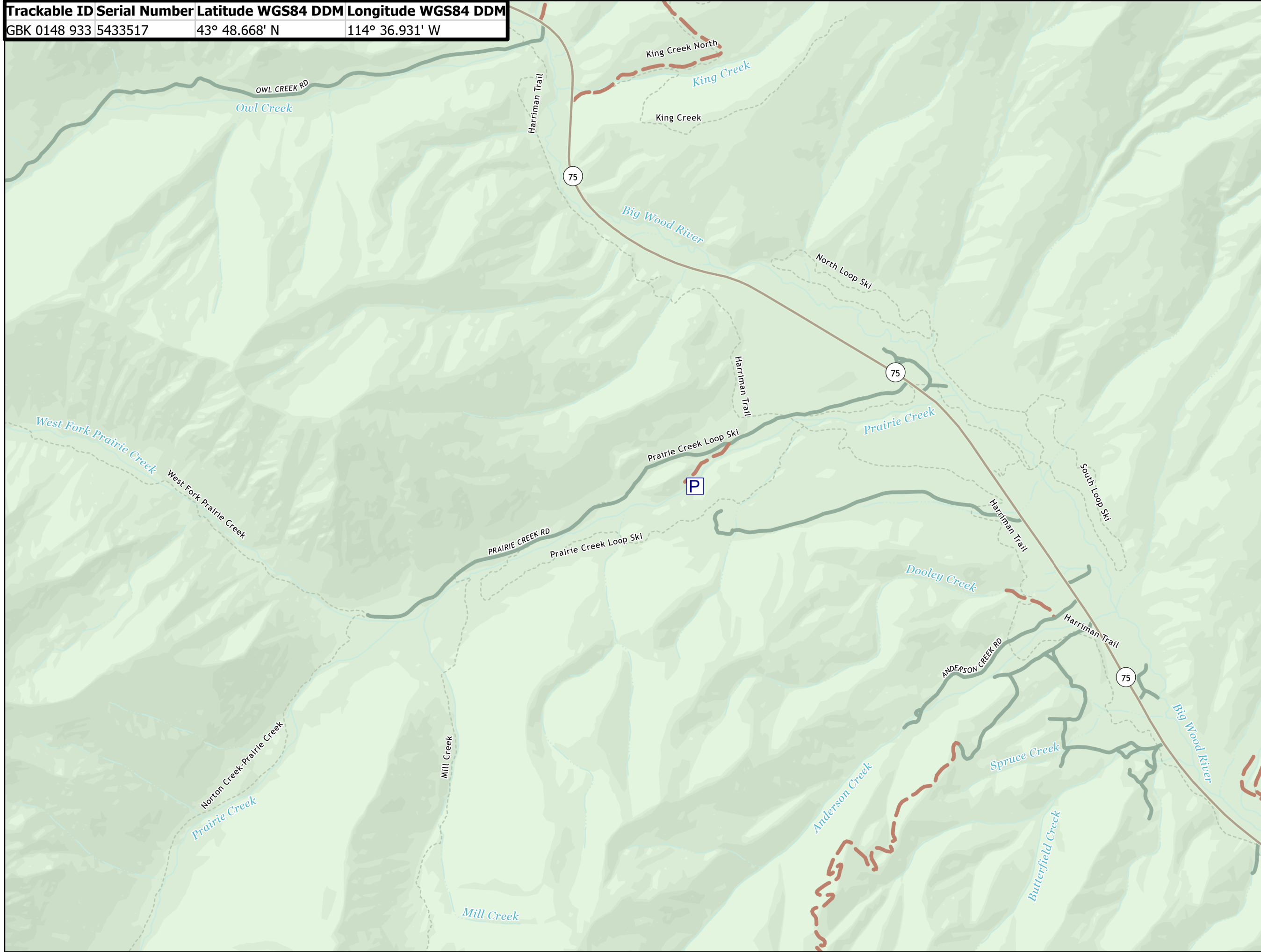


NAD 1983 UTM Zone 11N

dlachman
9/16/2022, 1335 hrs
ops_pumps_2022_RossFork_IDSTF000193



Trackable ID	Serial Number	Latitude WGS84 DDM	Longitude WGS84 DDM
GBK 0148 933	5433517	43° 48.668' N	114° 36.931' W



Pumps
Ross Fork
IDSTF000193

37,775 acres
as of 9/14/22, 2107 Hrs

Page 7 of 7



	Pump
	Local Connector
	Local Road
	4WD



NAD 1983 UTM Zone 11N

dlachman
9/16/2022, 1335 hrs
ops_pumps_2022_RossFork_IDSTF000193

