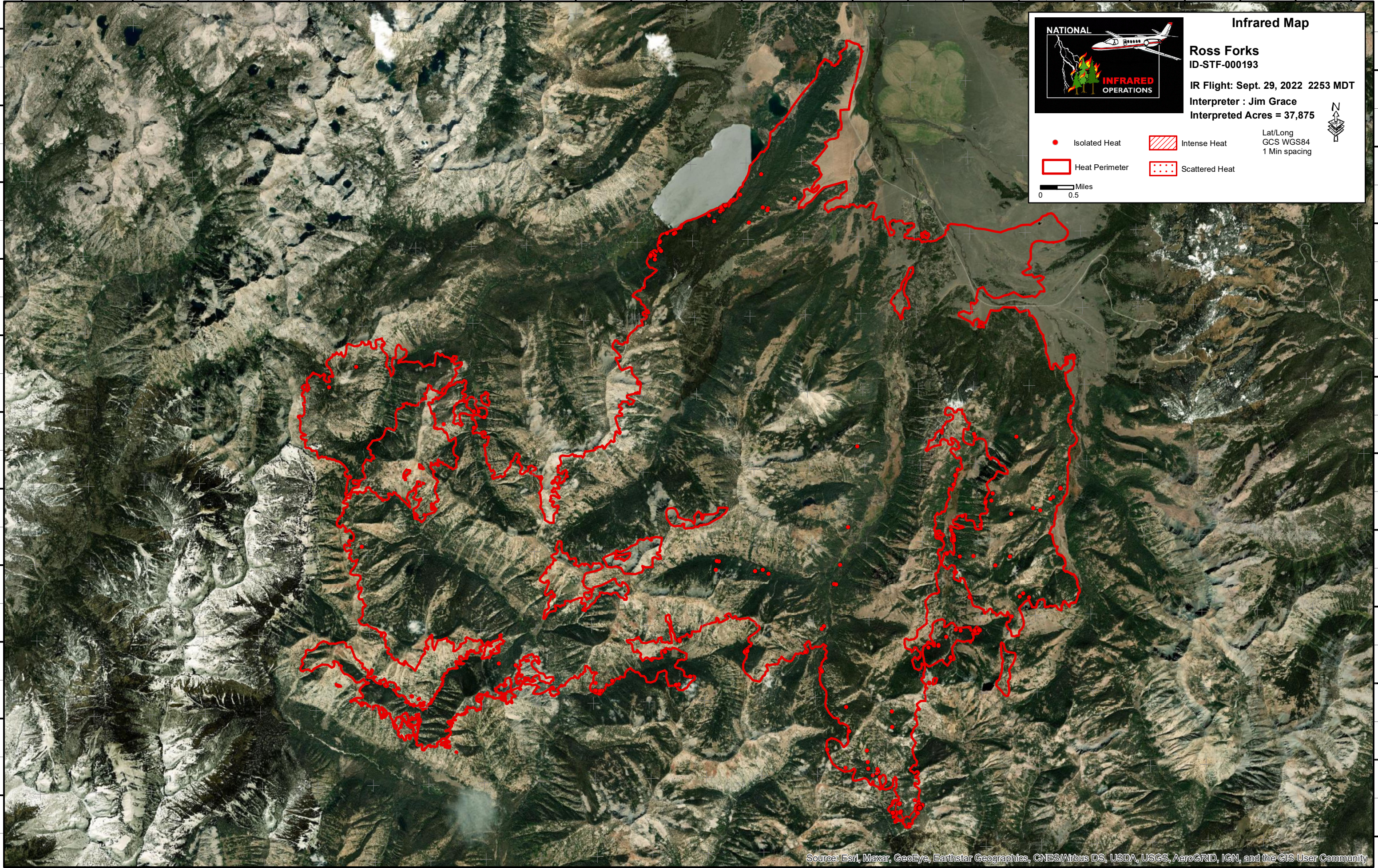


115°4'0"W 115°3'0"W 115°2'0"W 115°1'0"W 115°0'0"W 114°59'0"W 114°58'0"W 114°57'0"W 114°56'0"W 114°55'0"W 114°54'0"W 114°53'0"W 114°52'0"W 114°51'0"W 114°50'0"W 114°49'0"W 114°48'0"W 114°47'0"W 114°46'0"W 114°45'0"W 114°44'0"W 114°43'0"W 114°42'0"W 114°41'0"W 114°40'0"W

43°57'0"N  
43°56'0"N  
43°55'0"N  
43°54'0"N  
43°53'0"N  
43°52'0"N  
43°51'0"N  
43°50'0"N  
43°49'0"N  
43°48'0"N  
43°47'0"N



**NATIONAL INFRARED OPERATIONS**

**Infrared Map**  
**Ross Forks**  
 ID-STF-000193  
 IR Flight: Sept. 29, 2022 2253 MDT  
 Interpreter : Jim Grace  
 Interpreted Acres = 37,875

Lat/Long  
 GCS WGS84  
 1 Min spacing

● Isolated Heat  
 ■ Intense Heat  
 □ Heat Perimeter  
 □ Scattered Heat

Miles  
 0 0.5

43°56'0"N  
43°55'0"N  
43°54'0"N  
43°53'0"N  
43°52'0"N  
43°51'0"N  
43°50'0"N  
43°49'0"N  
43°48'0"N  
43°47'0"N  
43°46'0"N

115°4'0"W 115°3'0"W 115°2'0"W 115°1'0"W 115°0'0"W 114°59'0"W 114°58'0"W 114°57'0"W 114°56'0"W 114°55'0"W 114°54'0"W 114°53'0"W 114°52'0"W 114°51'0"W 114°50'0"W 114°49'0"W 114°48'0"W 114°47'0"W 114°46'0"W 114°45'0"W 114°44'0"W 114°43'0"W 114°42'0"W 114°41'0"W

Source: Esri, Maxar, GeoEye, Earthstar Geographics, CNES/Airbus DS, USDA, USGS, AeroGRID, IGN, and the GIS User Community