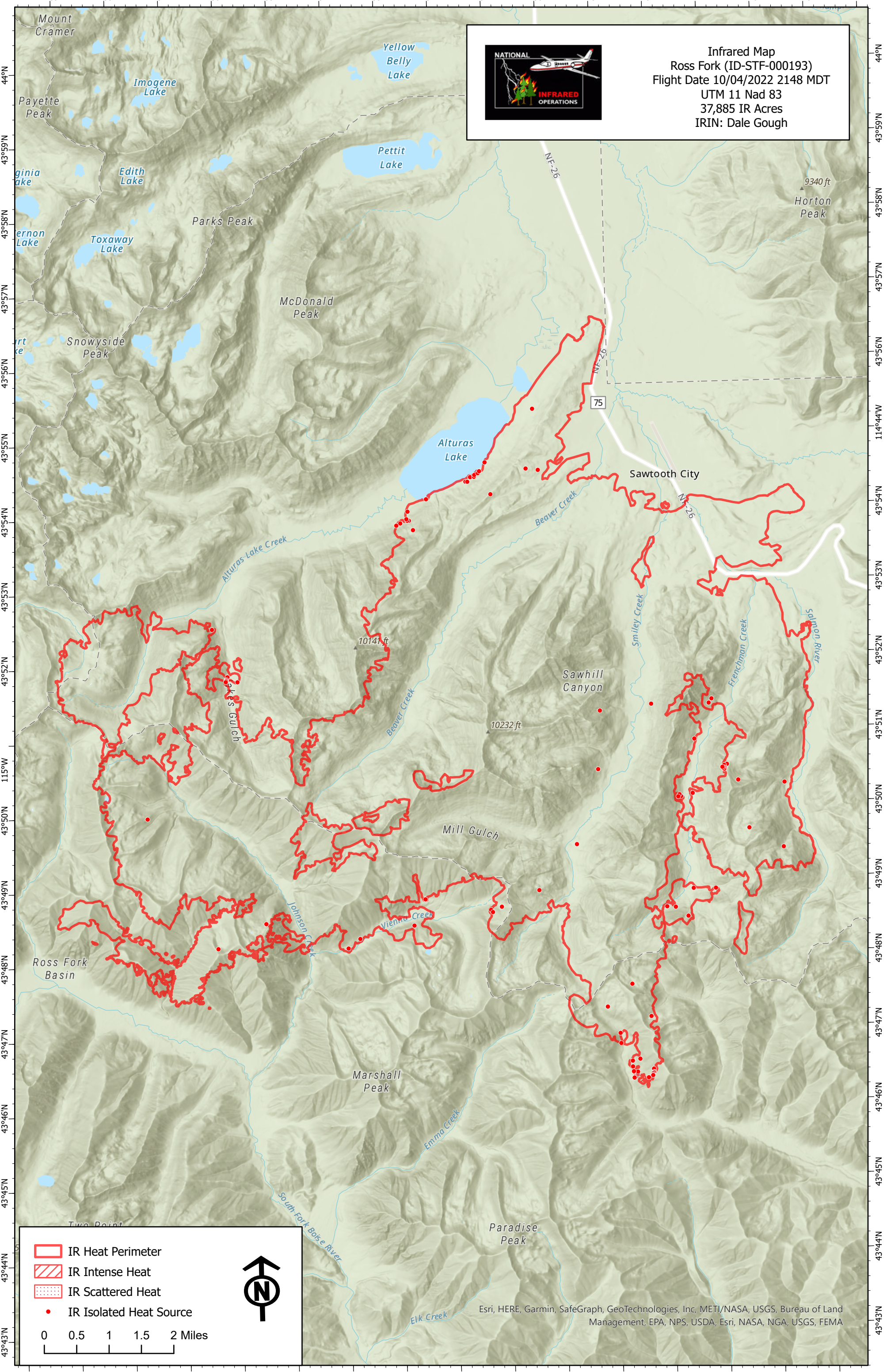








114°59'W 114°58'W 114°57'W 114°56'W 114°55'W 114°54'W 114°53'W 114°52'W 114°51'W 114°50'W 114°49'W 114°48'W 114°47'W 114°46'W 114°45'W 114°44'W

Infrared Map
 Ross Fork (ID-STF-000193)
 Flight Date 10/04/2022 2148 MDT
 UTM 11 Nad 83
 37,885 IR Acres
 IRIN: Dale Gough

-  IR Heat Perimeter
-  IR Intense Heat
-  IR Scattered Heat
-  IR Isolated Heat Source

0 0.5 1 1.5 2 Miles



Esri, HERE, Garmin, SafeGraph, GeoTechnologies, Inc, METI/NASA, USGS, Bureau of Land Management, EPA, NPS, USDA, Esri, NASA, NGA, USGS, FEMA

115°W 114°59'W 114°58'W 114°57'W 114°56'W 114°55'W 114°54'W 114°53'W 114°52'W 114°51'W 114°50'W 114°49'W 114°48'W 114°47'W 114°46'W 114°45'W