
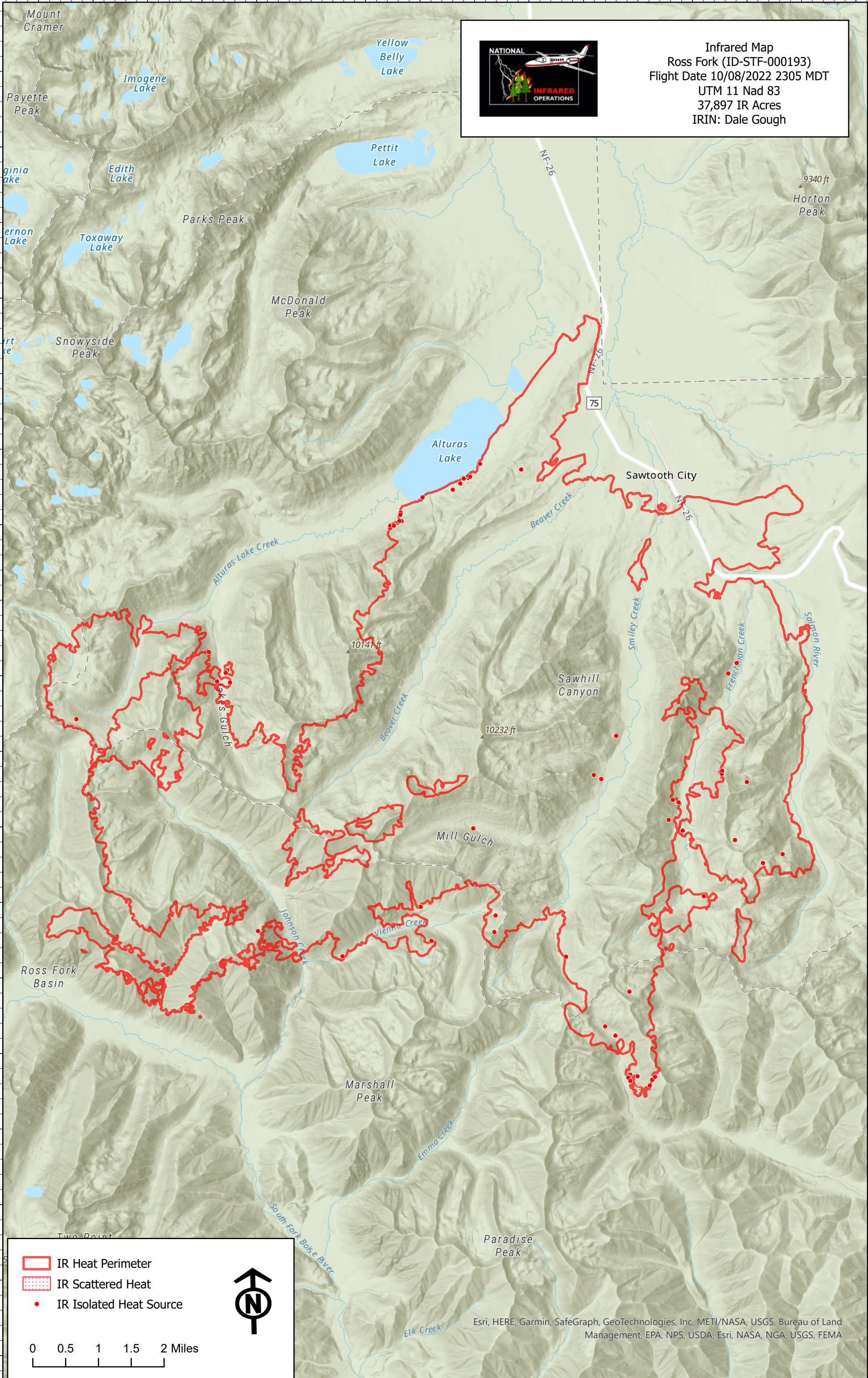






114°59'W 114°58'W 114°57'W 114°56'W 114°55'W 114°54'W 114°53'W 114°52'W 114°51'W 114°50'W 114°49'W 114°48'W 114°47'W 114°46'W 114°45'W 114°44'W



**Infrared Map**  
 Ross Fork (ID-STF-000193)  
 Flight Date 10/08/2022 2305 MDT  
 UTM 11 Nad 83  
 37,897 IR Acres  
 IRIN: Dale Gough



-  IR Heat Perimeter
-  IR Scattered Heat
-  IR Isolated Heat Source



0 0.5 1 1.5 2 Miles

Esri, HERE, Garmin, SafeGraph, GeoTechnologies, Inc, METI/NASA, USGS, Bureau of Land Management, EPA, NPS, USDA, Esri, NASA, NGA, USGS, FEMA

115°W 114°59'W 114°58'W 114°57'W 114°56'W 114°55'W 114°54'W 114°53'W 114°52'W 114°51'W 114°50'W 114°49'W 114°48'W 114°47'W 114°46'W 114°45'W