



TENMILE

2,024 Ac

Percent Complete

55%

Estimated Cost to Date

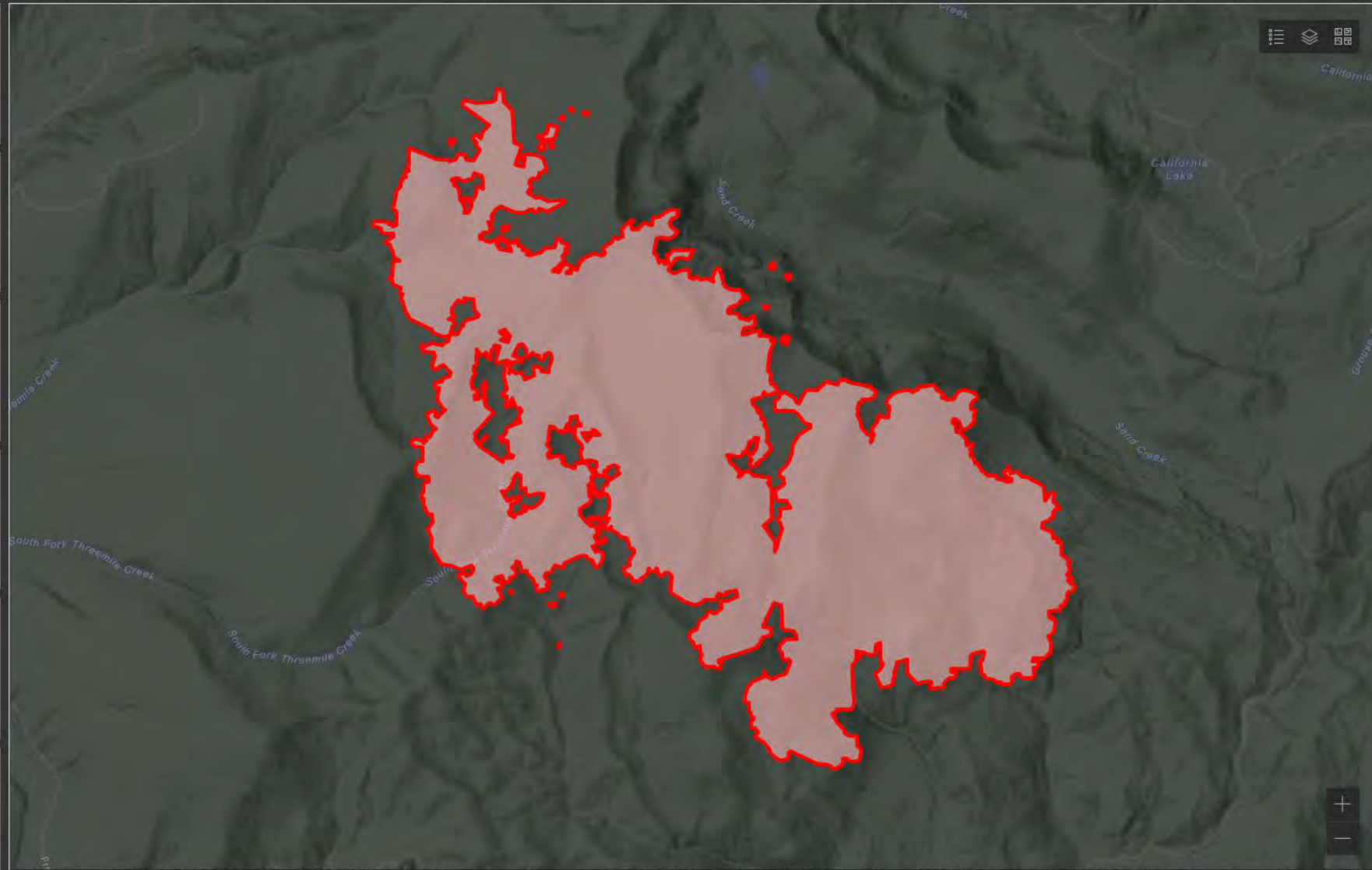
\$6.7M

Total Incident Personnel

259



● USFS 100%



Tenmile Fire Weather Outlook



For Planning Purposes Only, see the IAP for the Official Forecast

Forecast made Friday, September 23, 2022 - IMET Terry Lebo

Conditions at IRAWS 45 (6800 ft)	Sat	Sun	Mon	Tue	Wed	Thu
	24-Sep	25-Sep	26-Sep	27-Sep	28-Sep	29-Sep
Clouds @ 1500 (%)	5	0	5	5	25	20
Average Max Temp (F)	71	75	77	79	79	70
Daytime Min RH (%)	18	13	10	8	8	25
Overnight Recovery*	65	60	45	40	55	60
LAL	1	1	1	1	1	1
Haines Index	2	3	4	4	3	3
Ridge Gusts (mph)	13	14	17	17	20	17
Wind Direction**	NW	W-NW	SW	SW	SW	NW
Precip Chance	0%	0%	0%	0%	0%	0%
Wetting Rain Chance	0%	0%	0%	0%	0%	0%

KEY:

**Moderate Burning
Conditions**

**Caution - Elevated
Burning Conditions**

**Extreme Burning
Conditions**

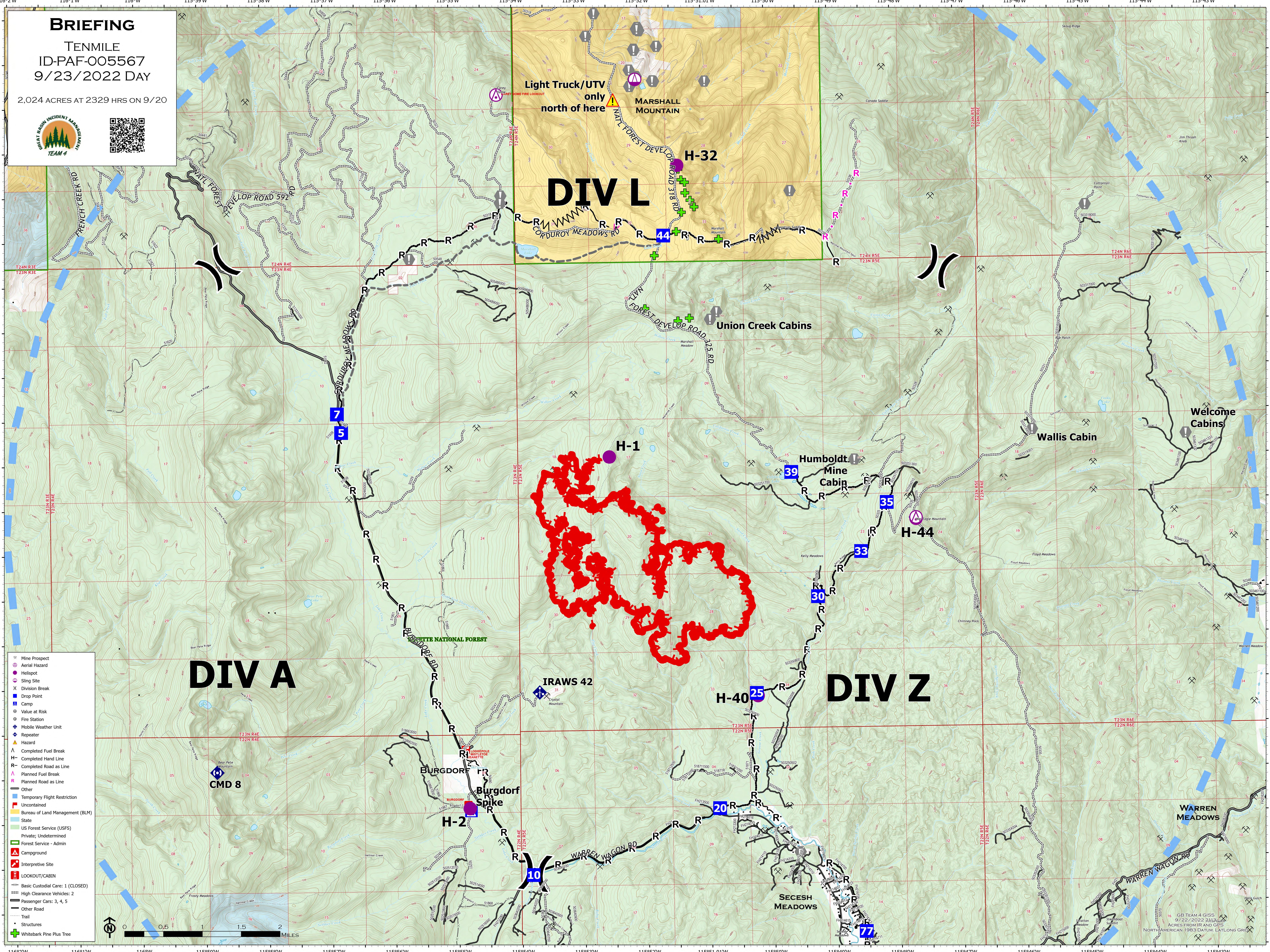
Clouds	> 40 %	15 to 40 %	< 15 %
Avg Max Temp	< 70 F	70 to 79 F	> 79 F
Min Humidity	> 39 %	26 to 39 %	< 26 %
*Overnight Recovery (following morning)	> 59 %	36 to 59 %	< 36 %
LAL	1	2 to 5	6
Haines Index	< 4	4	5 to 6
Ridge Wind	< 20 mph	20 to 25 mph	> 25 mph
**Wind Direction	Criticality of wind direction highly dependent on burn operations and/or structures threatened		

4 or more EXTREME blocks in a day equals
the potential for a Critical Weather Day

BRIEFING

TENMILE
ID-PAF-005567
9/23/2022 DAY

2,024 ACRES AT 2329 HRS ON 9/20



- Mine Prospect
- Aerial Hazard
- Helispot
- Sling Site
- Division Break
- Drop Point
- Camp
- Value at Risk
- Fire Station
- Mobile Weather Unit
- Repeater
- Hazard
- Completed Fuel Break
- Completed Hand Line
- Completed Road as Line
- Planned Fuel Break
- Planned Road as Line
- Other
- Temporary Flight Restriction
- Uncontained
- Bureau of Land Management (BLM)
- State
- US Forest Service (USFS)
- Private; Undetermined
- Forest Service - Admin
- Campground
- Interpretive Site
- LOOKOUT/CABIN
- Basic Custodial Care: 1 (CLOSED)
- High Clearance Vehicles: 2
- Passenger Cars: 3, 4, 5
- Other Road
- Trail
- Structures
- Whitebark Pine Plus Tree

16 GB TEAM 4 GISS
9/22/2022 2:11 PM
ACRES FROM IIR AND GIS
NORTH AMERICAN 1983 DATUM, LAT/LONG GRID