

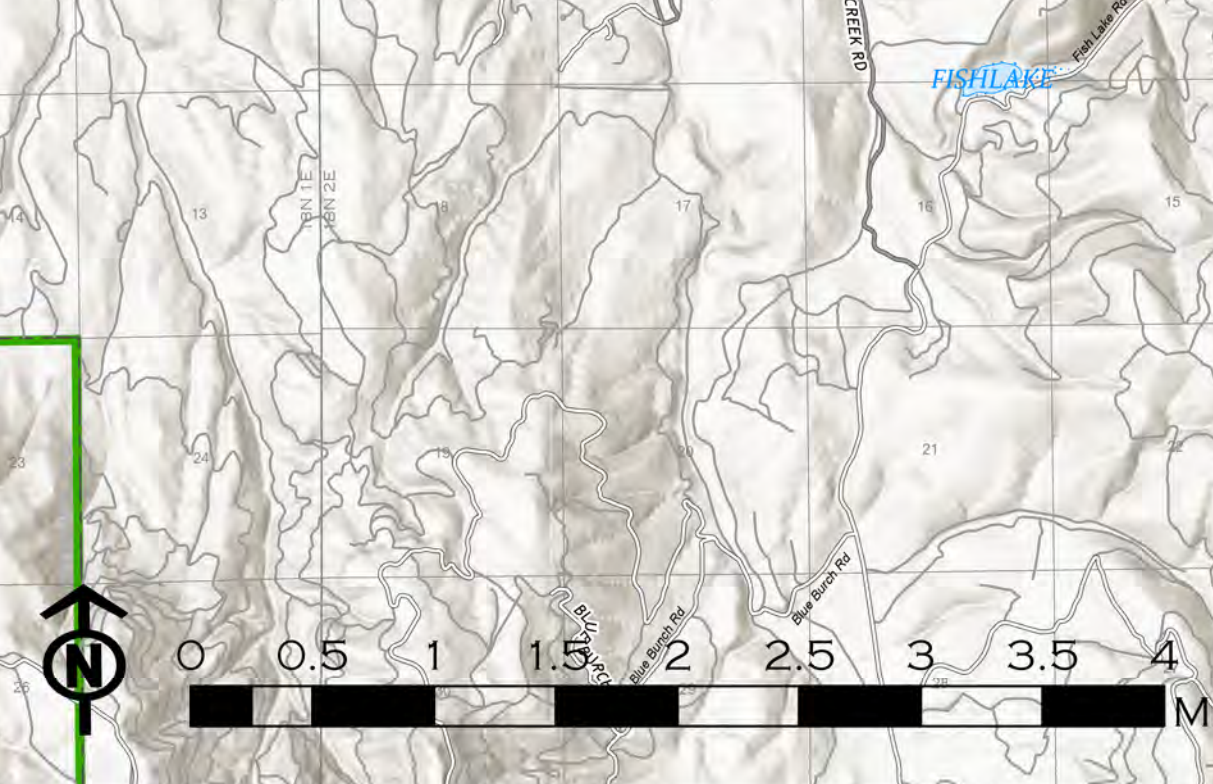
TRANSPORTATION

TENMILE
ID-PAF-005567
9/12/2022 DAY

1,713 ACRES AT 2346 HRS ON 9/11



- Helipoint
- Helibase
- X Division Break
- Incident Command Post
- Drop Point
- Camp
- Value at Risk
- Fire Station
- ◆ Repeater
- Wildfire Daily Fire Perimeter
- Planned Hand Line
- Planned Road as Line
- Uncontaminated
- ⊠ Mine Prospect



FC Point Type	Label	Elevation (Feet)	Latitude WGS84 DDM	Longitude WGS84 DDM
Camp	Burgdorf Spike	45° 16.097' N	115° 54.795' W	
Division Break		45° 22.210' N	115° 53.708' W	
Division Break		45° 22.116' N	115° 47.281' W	
Drop Point	10	45° 15.371' N	115° 53.819' W	
Drop Point	20	45° 16.090' N	115° 50.855' W	
Drop Point	25	45° 17.374' N	115° 50.248' W	
Drop Point	30	45° 18.447' N	115° 49.256' W	
Fire Station		45° 15.591' N	115° 49.590' W	
Helibase	Osborn Helibase	44° 53.477' N	116° 06.167' W	
Helibase		45° 02.061' N	116° 16.123' W	
Helipoint	H-1	45° 20.035' N	115° 52.532' W	
Helipoint	H-2	45° 16.374' N	115° 54.812' W	
Incident Command Post	ICP	44° 52.864' N	116° 09.743' W	
Repeater	AC Link	45° 00.150' N	116° 08.085' W	
Repeater	CHD 7	45° 19.314' N	115° 47.689' W	
Repeater	CHD 8	45° 18.916' N	116° 31.207' W	
Repeater	UHF Link	45° 00.150' N	116° 08.089' W	

GIBLET BASIN GISS
AMERICAN SOCIETY OF PHOTOGRAMMETRY
NORTH AMERICAN 1983 DATUM LAT/LONG GRID