

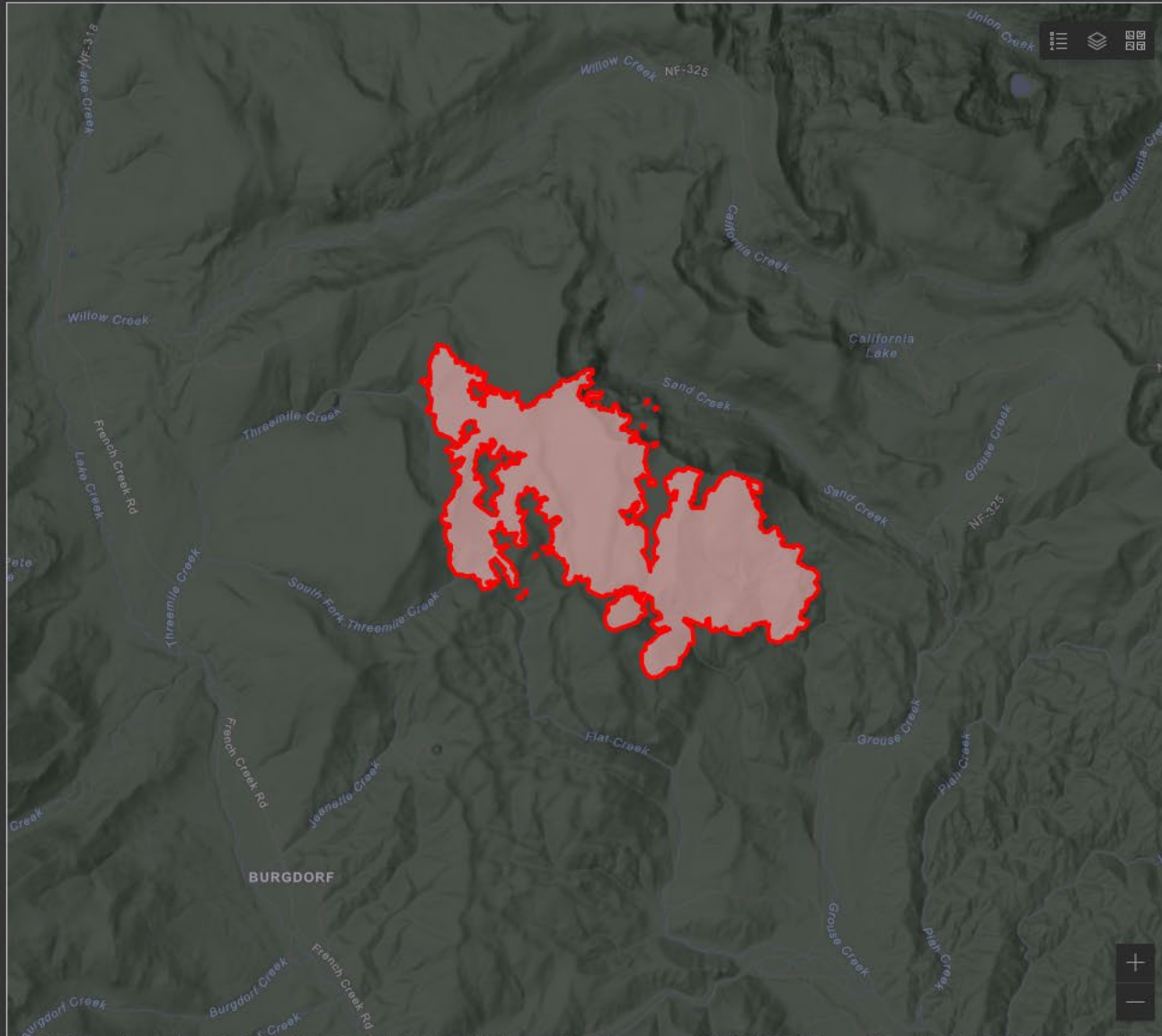
# TENMILE

1,713 Ac

Percent Contained  
0%

Estimated Cost to Date  
\$1.1M

Total Incident Personnel  
315



# MIDDLE

54 Ac

Percent Contained  
0%

Estimated Cost to Date  
\$53k

Total Incident Personnel  
42



# Tenmile and Middle Fire Weather Outlook

For Planning Purposes Only, see the IAP for the Official Forecast



Forecast made Monday, September 12, 2022 - IMET Terry Lebo

Conditions at 7000 Ft	Tue	Wed	Thu	Fri	Sat	Sun
	13-Sep	14-Sep	15-Sep	16-Sep	17-Sep	18-Sep
Clouds @ 1500 (%)	75	35	70	80	60	50
Average Max Temp (F)	63	65	58	61	59	58
Daytime Min RH (%)	45	35	45	30	35	45
LAL	2	2	2	2	2	2
Haines Index	3	3	3	3	3	3
Ridge Gusts (mph)	15	20	19	20	20	22
Wind Direction*	SW-W	W-NW	NW	NW	W-NW	W
Precip Chance	50%	40%	60%	20%	30%	30%
Wetting Rain Chance	20%	10%	30%	0%	5%	5%

**KEY:**

**Moderate Burning  
Conditions**

**Caution - Elevated  
Burning Conditions**

**Extreme Burning  
Conditions**

Clouds	> 40 %	15 to 40 %	< 15 %
Avg Max Temp	< 70 F	70 to 79 F	> 79 F
Min Humidity	> 39 %	26 to 39 %	< 26 %
LAL	1	2 to 5	6
Haines Index	< 4	4	5 to 6
Ridge Wind	< 20 mph	20 to 25 mph	> 25 mph
*Wind Direction	Criticality of wind direction highly dependent on burn operations and/or structures threatened		

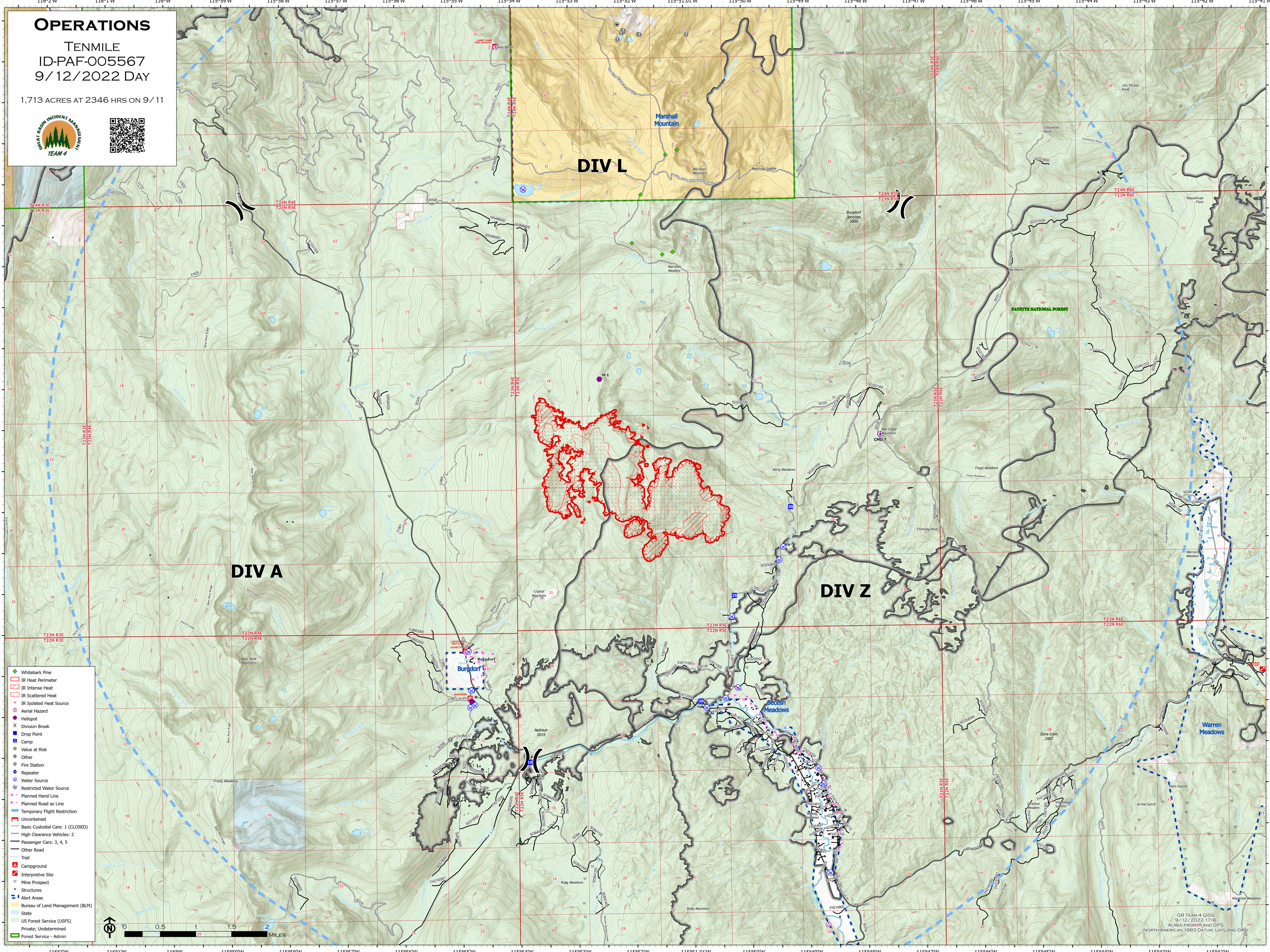
**4 or more EXTREME blocks in a day equals  
the potential for a Critical Weather Day**



# OPERATIONS

TENMILE  
ID-PAF-005567  
9/12/2022 DAY

1,713 ACRES AT 2346 HRS ON 9/11

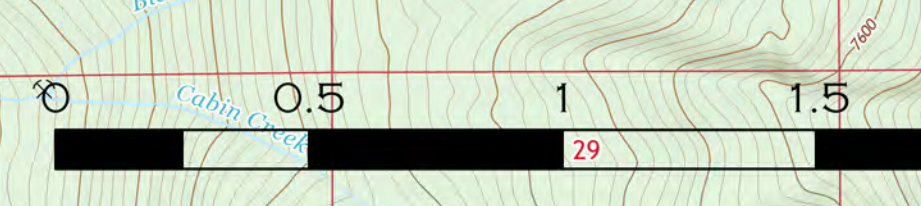


**DIV A**

**DIV L**

**DIV Z**

- Whitebark Pine
- IR Heat Perimeter
- IR Intense Heat
- IR Scattered Heat
- IR Isolated Heat Source
- Aerial Hazard
- Helispot
- Division Break
- Drop Point
- Camp
- Value at Risk
- Other
- Fire Station
- Repeater
- Water Source
- Restricted Water Source
- Planned Hand Line
- Planned Road as Line
- Temporary Flight Restriction
- Uncontained
- Basic Custodial Care: 1 (CLOSED)
- High Clearance Vehicles: 2
- Passenger Cars: 3, 4, 5
- Other Road
- Trail
- Campground
- Interpretive Site
- Mine Prospect
- Structures
- Alert Areas
- Bureau of Land Management (BLM)
- State
- US Forest Service (USFS)
- Private; Undetermined
- Forest Service - Admin



GB TEAM 4 GIS  
9/12/2022 1716  
ACRES FROM IR AND GPS  
NORTH AMERICAN 1983 DATUM - LAT/LONG GRID