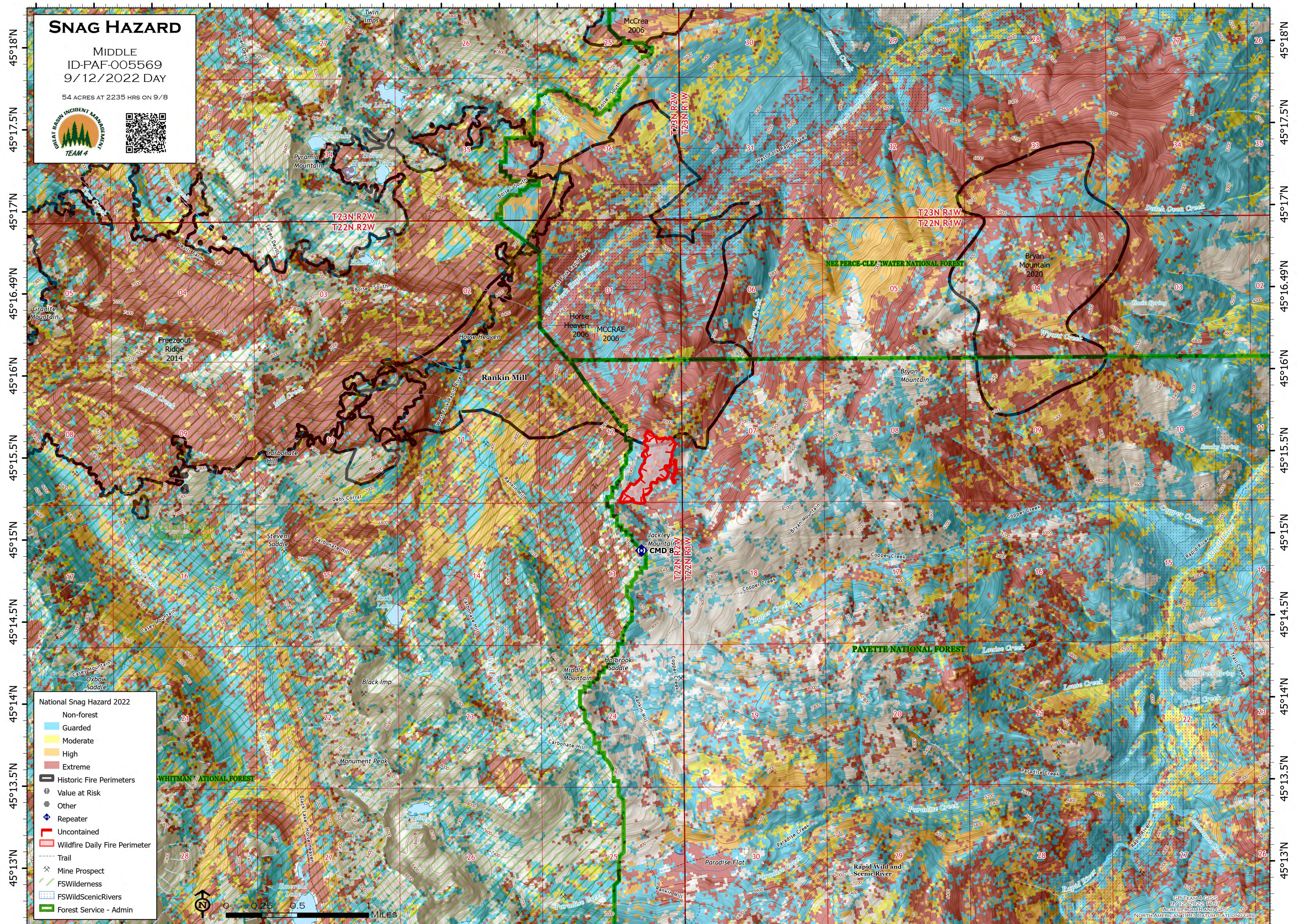


116°36.5'W 116°36.01'W 116°35.5'W 116°35'W 116°34.5'W 116°34'W 116°33.5'W 116°33'W 116°32.5'W 116°32'W 116°31.5'W 116°31'W 116°30.5'W 116°30'W 116°29.5'W 116°29'W 116°28.51'W 116°28'W 116°27.5'W 116°27'W 116°26.5'W 116°26'W



**SNAG HAZARD**

MIDDLE  
ID-PAF-005569  
9/12/2022 DAY

54 ACRES AT 2235 HRS ON 9/8




**National Snag Hazard 2022**

- Non-forest
- Guarded
- Moderate
- High
- Extreme

**Historic Fire Perimeters**

- Value at Risk
- Other
- Repeater
- Uncontained
- Wildfire Daily Fire Perimeter

**Other Features**

- Trail
- Mine Prospect
- FS Wilderness
- FS Wild Scenic Rivers
- Forest Service - Admin



© TEAM 4 GIS  
9/12/2022 17:57  
Aerial Imagery and GPS  
NORTH AMERICAN 1983 DATUM, LAT/LONG GRID

116°36.5'W 116°36.01'W 116°35.5'W 116°35'W 116°34.5'W 116°34'W 116°33.5'W 116°33'W 116°32.5'W 116°32'W 116°31.5'W 116°31'W 116°30.5'W 116°30'W 116°29.5'W 116°29'W 116°28.51'W 116°28'W 116°27.5'W 116°27'W 116°26.5'W 116°26'W