

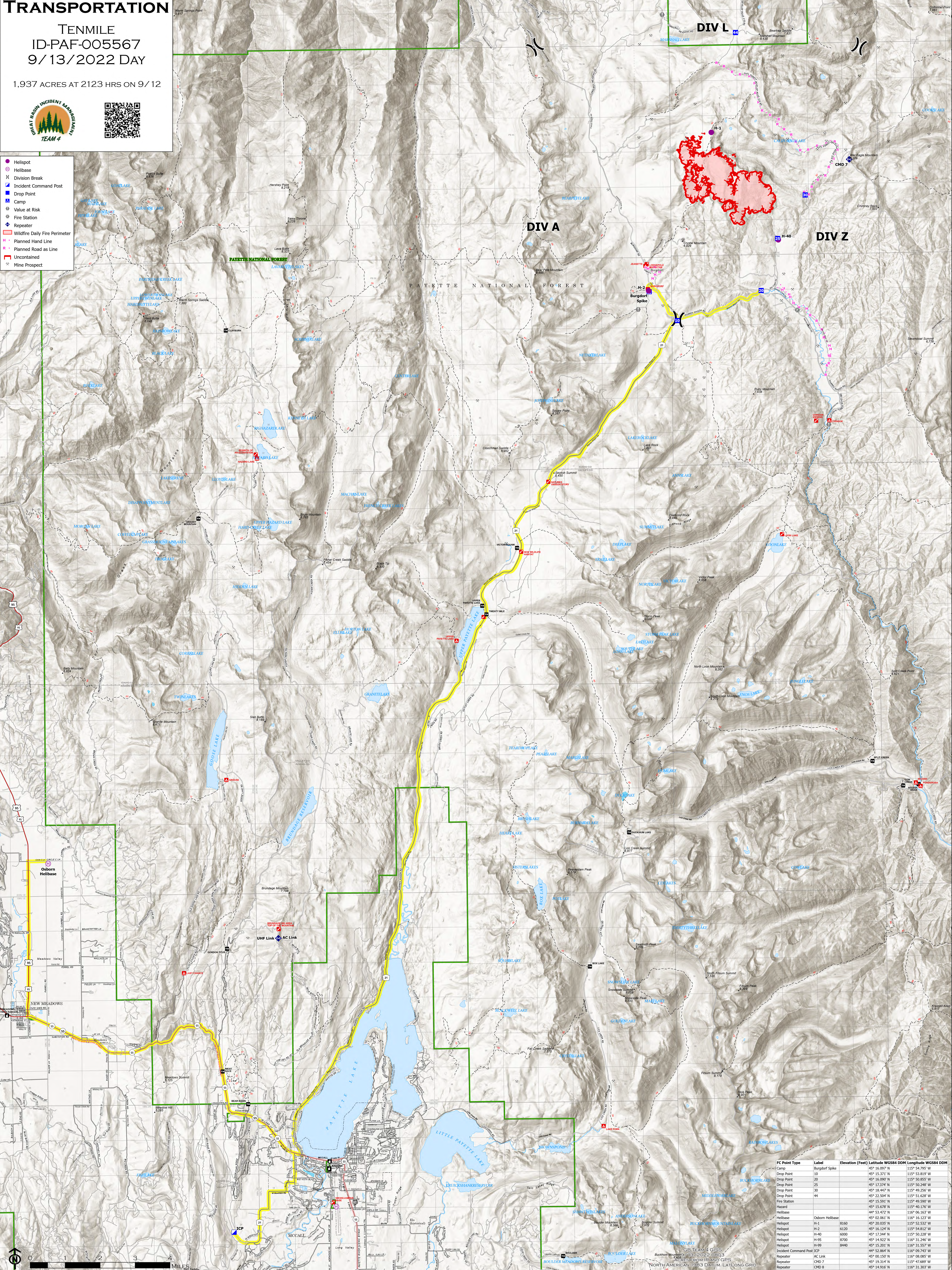
TRANSPORTATION

TENMILE
ID-PAF-005567
9/13/2022 DAY

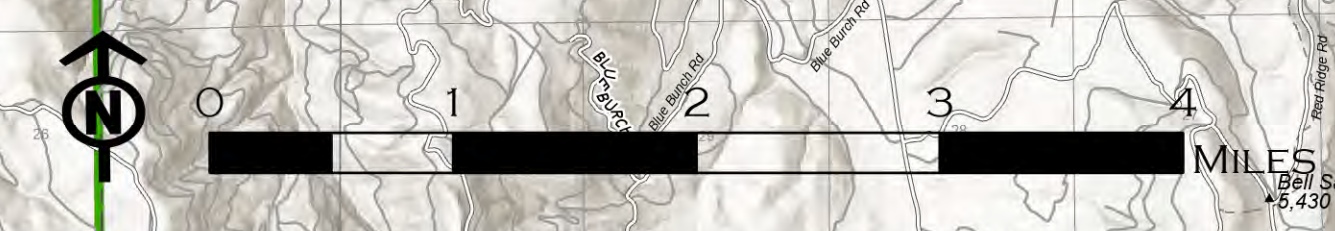
1,937 ACRES AT 2123 HRS ON 9/12



- Helispot
- Helibase
- X Division Break
- Incident Command Post
- Drop Point
- Camp
- Value at Risk
- Fire Station
- Repeater
- Wildfire Daily Fire Perimeter
- Planned Hand Line
- Planned Road as Line
- Uncontained
- Mine Prospect



FC Point Type	Label	Elevation (Feet)	Latitude WGS84 DDM	Longitude WGS84 DDM
Camp	Burdorf Spike	45° 16.097' N	115° 54.795' W	
Drop Point	10	45° 15.371' N	115° 53.819' W	
Drop Point	20	45° 16.096' N	115° 50.855' W	
Drop Point	25	45° 17.274' N	115° 50.248' W	
Drop Point	30	45° 18.447' N	115° 49.256' W	
Drop Point	44	45° 22.504' N	115° 51.628' W	
Fire Station	H-99	45° 15.501' N	115° 49.597' W	
Hazard		45° 15.678' N	115° 40.176' W	
Helibase		44° 53.472' N	116° 06.163' W	
Helibase	Osborn Helibase	45° 02.061' N	116° 16.123' W	
Helispot	H-1	45° 10.025' N	115° 52.332' W	
Helispot	H-2	45° 16.124' N	115° 54.812' W	
Helispot	H-40	45° 17.344' N	115° 50.228' W	
Helispot	H-95	45° 14.922' N	116° 31.246' W	
Helispot	H-99	45° 15.501' N	115° 49.597' W	
Incident Command Post	ICP	44° 52.864' N	116° 09.743' W	
Repeater	AC Link	45° 00.150' N	116° 08.085' W	
Repeater	CHD 7	45° 19.314' N	115° 47.689' W	
Repeater	CHD 8	45° 14.916' N	116° 21.203' W	
Repeater	UHF Link	45° 00.150' N	116° 08.089' W	



© TEAM 4 GIS
AMERICAN LAND SURVEYING SYSTEMS
NORTH AMERICAN 1983 DATUM, LAT-LONG GRID