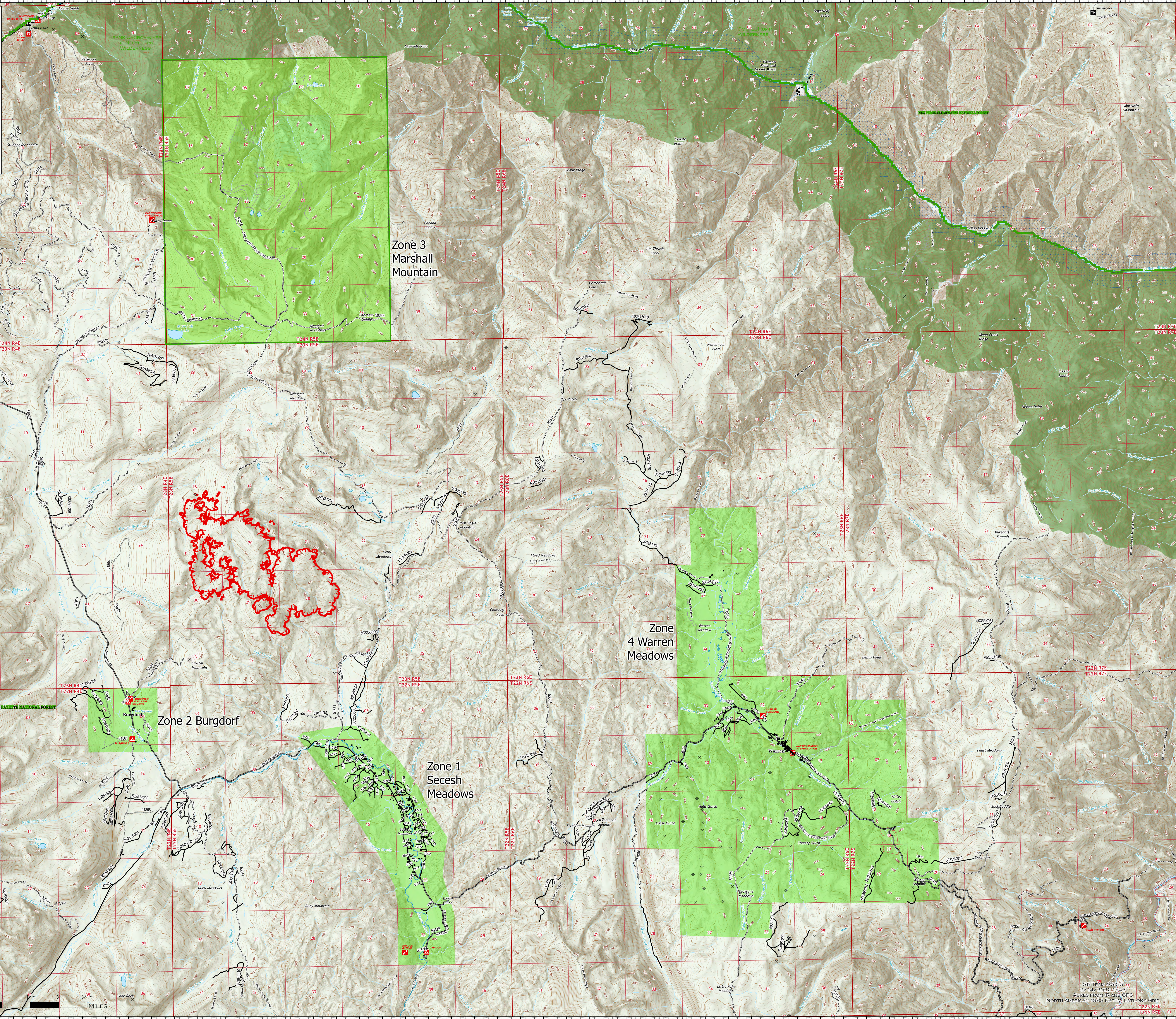


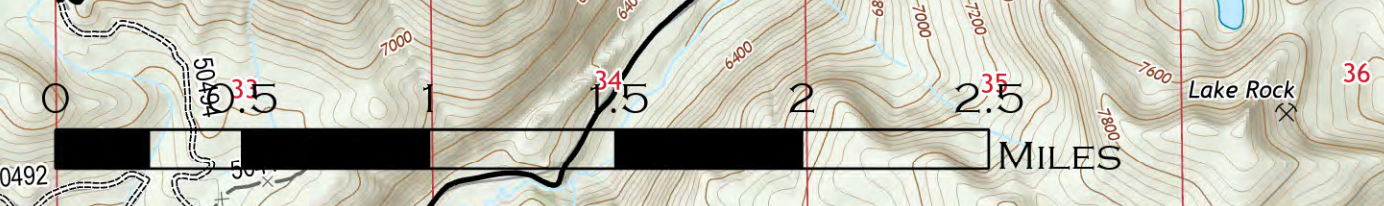
ALERT AREAS

TENMILE
ID-PAF-005567
9/14/2022 DAY

1,937 ACRES AT 2123 HRS ON 9/12



- Alert Areas
- Uncontained
- Basic Custodial Care: 1 (CLOSED)
- High Clearance Vehicles: 2
- Passenger Cars: 3, 4, 5
- Other Road
- Trail
- Campground
- Trailhead
- Picnic Site
- Boating Site
- Interpretive Site
- Mine Prospect
- Structures
- FS Wilderness
- FS Wildscenic Rivers
- Bureau of Land Management (BLM)
- State
- US Forest Service (USFS)
- Private; Undetermined
- Forest Service - Admin



GB TEAM 4 GIS
9/14/2022 15:43
ACRES FROM IRM AND GPS
NORTH AMERICAN 1983 DATUM, LAT/LONG GRID