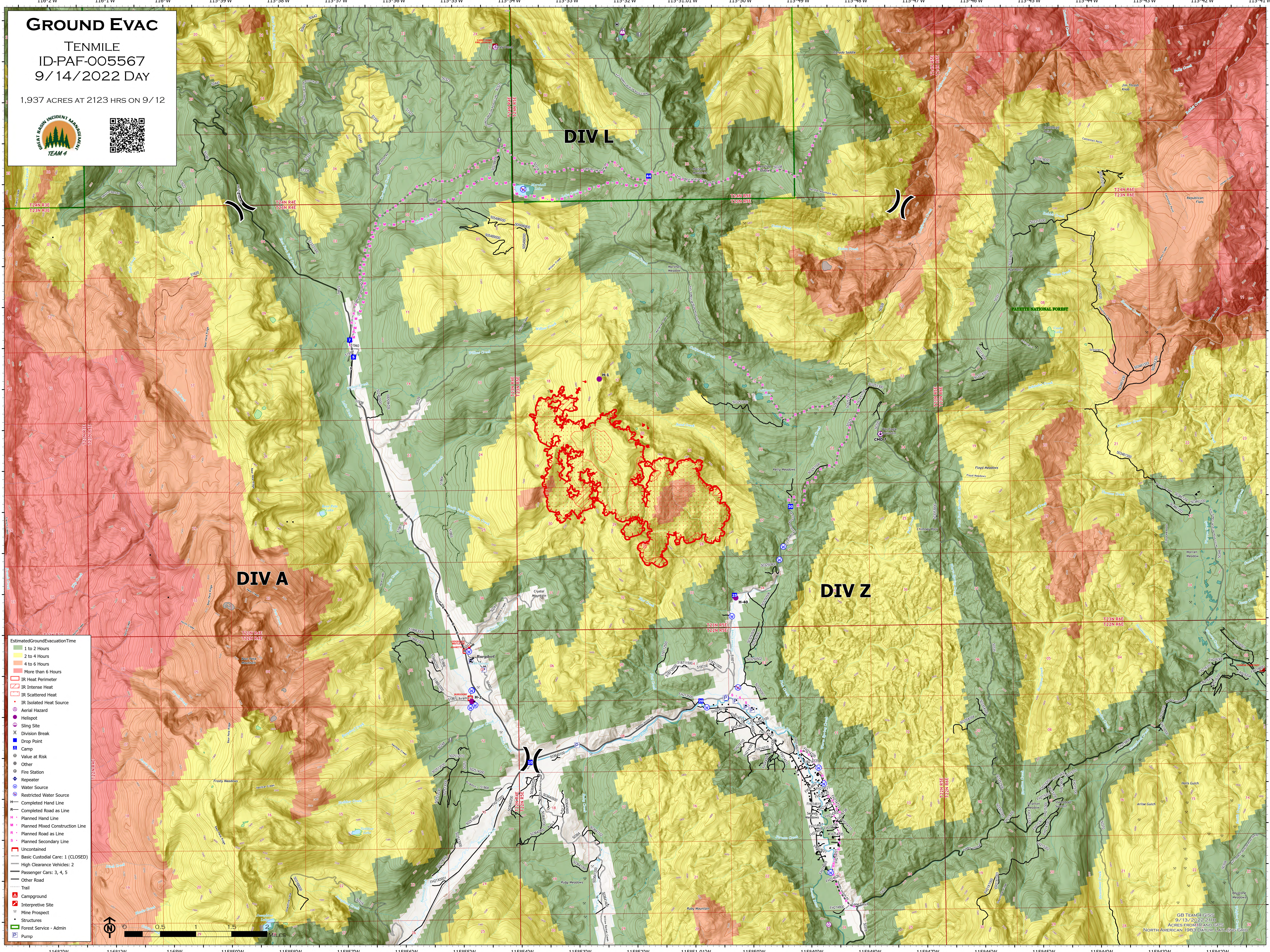


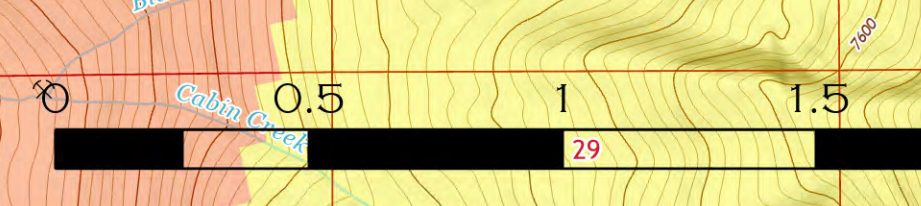
GROUND EVAC

TENMILE
ID-PAF-005567
9/14/2022 DAY

1,937 ACRES AT 2123 HRS ON 9/12



- Estimated Ground Evacuation Time
 - 1 to 2 Hours
 - 2 to 4 Hours
 - 4 to 6 Hours
 - More than 6 Hours
- IR Heat Perimeter
- IR Intense Heat
- IR Scattered Heat
- IR Isolated Heat Source
- Aerial Hazard
- Helispot
- Sling Site
- Division Break
- Drop Point
- Camp
- Value at Risk
- Other
- Fire Station
- Repeater
- Water Source
- Restricted Water Source
- Completed Hand Line
- Completed Road as Line
- Planned Hand Line
- Planned Mixed Construction Line
- Planned Road as Line
- Planned Secondary Line
- Uncontained
- Basic Custodial Care: 1 (CLOSED)
- High Clearance Vehicles: 2
- Passenger Cars: 3, 4, 5
- Other Road
- Trail
- Campground
- Interpretive Site
- Mine Prospect
- Structures
- Forest Service - Admin
- Pump



GB TEAM 4 GIS
9/13/2022 2118
ACRES FROM IAN/GSRS
NORTH AMERICAN 1983 DATUM LANTIS 30