

BRIEFING

TENMILE
ID-PAF-005567
9/14/2022 DAY

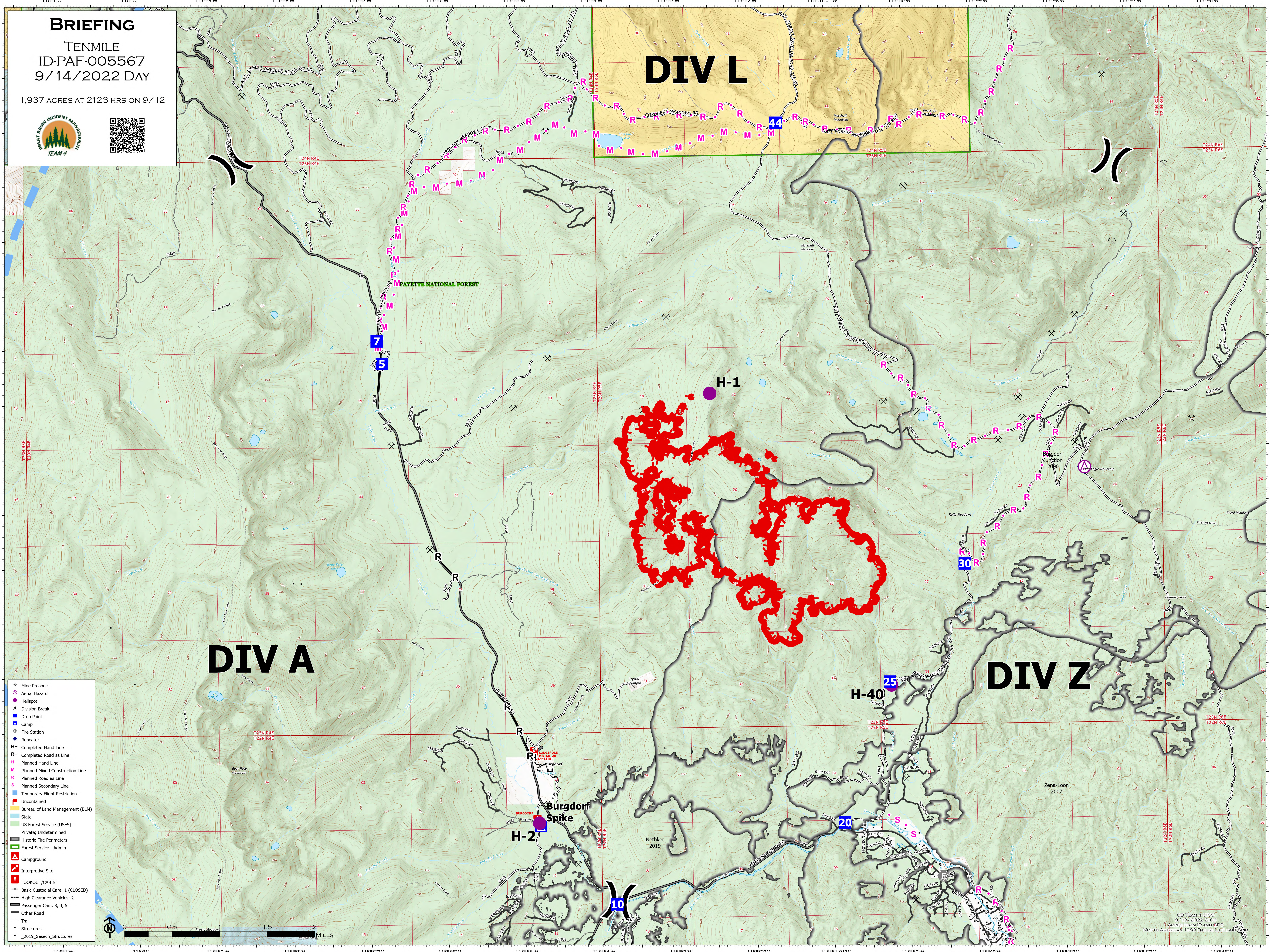
1,937 ACRES AT 2123 HRS ON 9/12



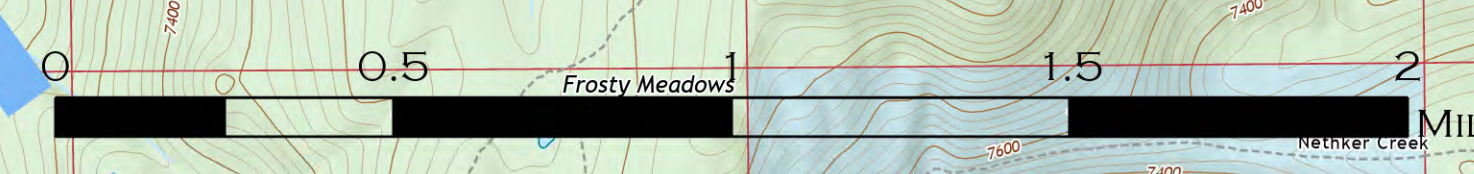
DIV L

DIV A

DIV Z



- Mine Prospect
- Aerial Hazard
- Helispot
- Division Break
- Drop Point
- Camp
- Fire Station
- Repeater
- H - Completed Hand Line
- R - Completed Road as Line
- P - Planned Hand Line
- M - Planned Mixed Construction Line
- S - Planned Road as Line
- S - Planned Secondary Line
- Temporary Flight Restriction
- Uncontained
- Bureau of Land Management (BLM)
- State
- US Forest Service (USFS)
- Private; Undetermined
- Historic Fire Perimeters
- Forest Service - Admin
- Campground
- Interpretive Site
- LOOKOUT/CABIN
- Basic Custodial Care: 1 (CLOSED)
- High Clearance Vehicles: 2
- Passenger Cars: 3, 4, 5
- Other Road
- Trail
- Structures
- _2019_Sesech_Structures



GB TEAM 4 GISS
9/13/2022 2106
ACRES FROM IIR AND GPS
NORTH AMERICAN 1983 DATUM, LATLONG