

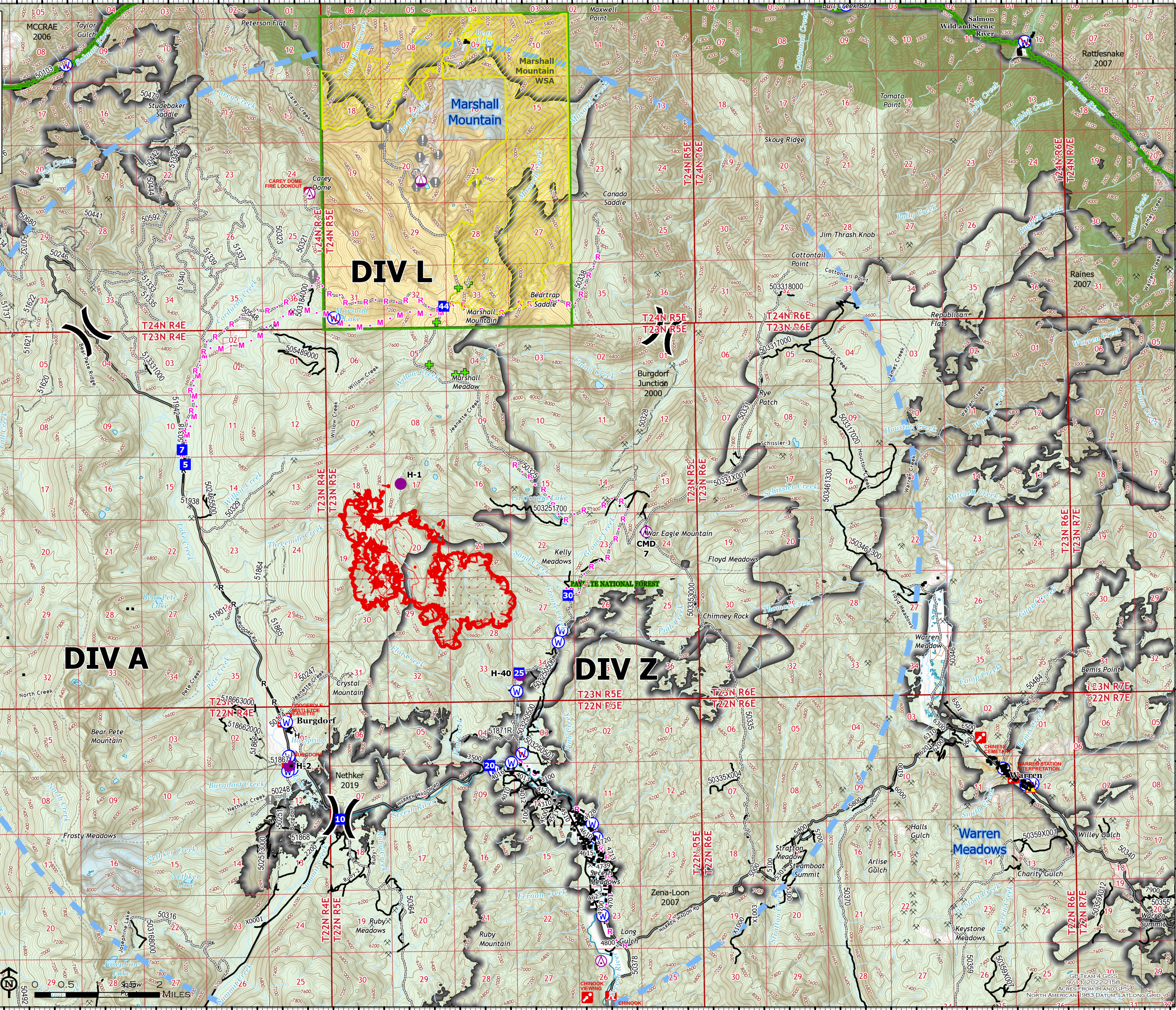
116°2'W 116°W 115°58'W 115°56'W 115°54'W 115°52'W 115°50'W 115°48'W 115°46'W 115°44'W 115°42'W 115°40'W 115°38'W

**OPERATIONS**

TENMILE  
ID-PAF-005567  
9/14/2022 DAY

1,937 ACRES AT 2123 HRS ON 9/12





**DIV L**

**DIV A**

**DIV Z**



- IR Heat Perimeter
- IR Intense Heat
- IR Scattered Heat
- IR Isolated Heat Source
- Aerial Hazard
- Helispot
- Sling Site
- Division Break
- Drop Point
- Camp
- Value at Risk
- Other
- Fire Station
- Repeater
- Hazard
- Water Source
- Restricted Water Source
- Completed Hand Line
- Completed Road as Line
- Planned Hand Line
- Planned Mixed Construction Line
- Planned Road as Line
- Planned Secondary Line
- Temporary Flight Restriction
- Uncontained Campground
- Interpretive Site
- Basic Custodial Care: 1 (CLOSED)
- High Clearance Vehicles: 2
- Passenger Cars: 3, 4, 5
- Other Road
- Trail
- Mine Prospect
- Structures
- Alert Areas - labels only
- FSI Wilderness
- FSI Wild/Scenic/Rivers
- Bureau of Land Management (BLM)
- State
- US Forest Service (USFS)
- Private; Undetermined



0.5 MILES

GB TEAM 4 GIS 9/13/2022 2:15P ACRES FROM ITRAKO GFS2 NORTH AMERICAN 1983 DATUM, LAT/LONG GRID

45°26'N 45°23.99'N 45°22'N 45°20'N 45°18'N 45°16'N 45°14'N

45°26'N 45°23.99'N 45°22'N 45°20'N 45°18'N 45°16'N 45°14'N

116°4'W 116°2'W 116°W 115°58'W 115°56'W 115°54'W 115°52'W 115°50'W 115°48'W 115°46'W 115°44'W 115°42'W 115°40'W 115°38'W