

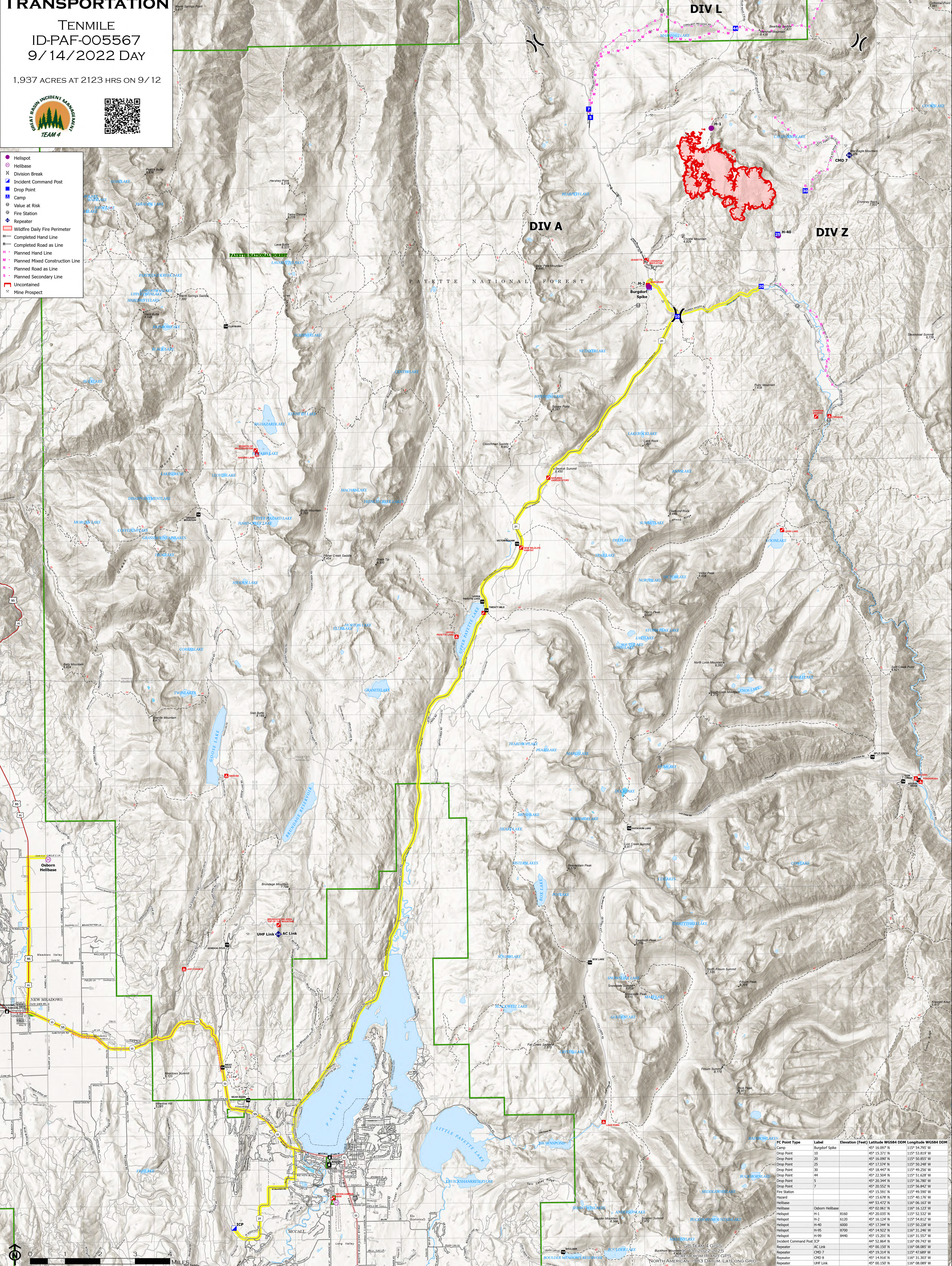
TRANSPORTATION

TENMILE
ID-PAF-005567
9/14/2022 DAY

1,937 ACRES AT 2123 HRS ON 9/12



- Helispot
- Helibase
- X Division Break
- Incident Command Post
- Drop Point
- Camp
- Value at Risk
- Fire Station
- Repeater
- Wildfire Daily Fire Perimeter
- H Completed Hand Line
- R Completed Road as Line
- M Planned Hand Line
- Planned Mixed Construction Line
- P Planned Road as Line
- S Planned Secondary Line
- Uncontained
- Mine Prospect



FC Point Type	Label	Elevation (Feet)	Latitude WGS84 DDM	Longitude WGS84 DDM
Camp	Burgdorf Spike	45° 16.097' N	115° 54.795' W	
Drop Point	10	45° 15.371' N	115° 53.819' W	
Drop Point	20	45° 16.090' N	115° 50.855' W	
Drop Point	25	45° 17.374' N	115° 50.248' W	
Drop Point	30	45° 18.447' N	115° 49.256' W	
Drop Point	44	45° 22.548' N	115° 51.608' W	
Drop Point	5	45° 20.344' N	115° 56.787' W	
Drop Point	7	45° 20.552' N	115° 56.842' W	
Fire Station		45° 15.591' N	115° 49.590' W	
Helibase	Osborn Helibase	45° 15.371' N	115° 49.176' W	
Helibase		44° 53.472' N	116° 06.163' W	
Helispot	H-1	45° 02.061' N	116° 16.123' W	
Helispot	H-2	45° 20.035' N	115° 52.532' W	
Helispot	H-3	6123	45° 16.244' N	115° 54.812' W
Helispot	H-40	6000	45° 17.344' N	115° 50.228' W
Helispot	H-95	8700	45° 14.922' N	116° 31.246' W
Helispot	H-99	45° 15.201' N	116° 31.527' W	
Incident Command Post	ICP	44° 53.364' N	116° 09.743' W	
Repeater	AC Link	45° 19.314' N	115° 48.085' W	
Repeater	CMD 7	45° 19.314' N	115° 47.689' W	
Repeater	CMD 8	45° 14.916' N	116° 31.303' W	
Repeater	UHF Link	45° 21.157' N	116° 08.289' W	
Shing Site		45° 24.254' N	115° 52.046' W	



GT TEAM 4 GIS
AMERICAN DATUM BINARY GPS
NORTH AMERICAN 1983 DATUM LAT-LONG GRID