

BRIEFING

TENMILE
ID-PAF-005567
9/15/2022 DAY

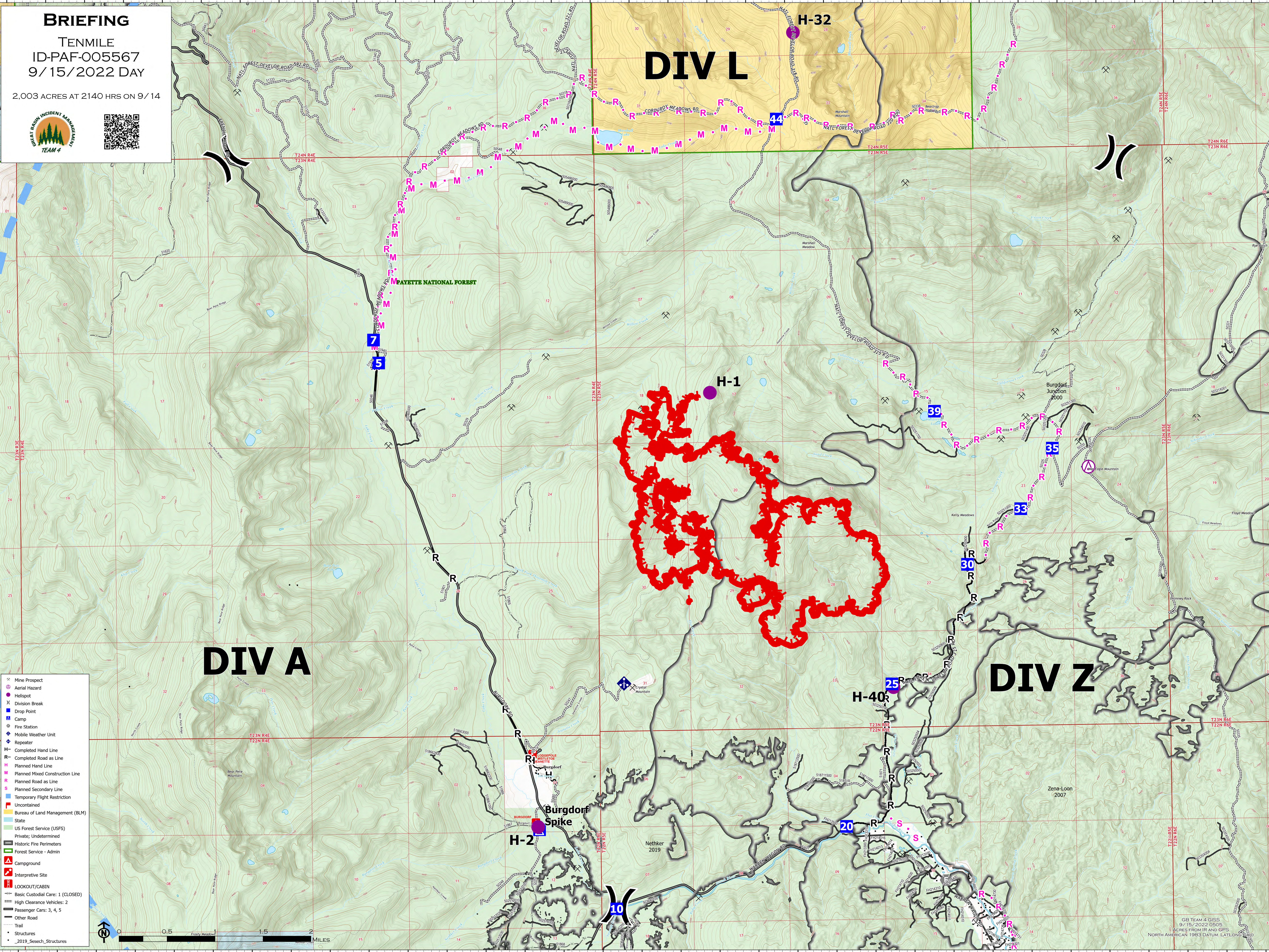
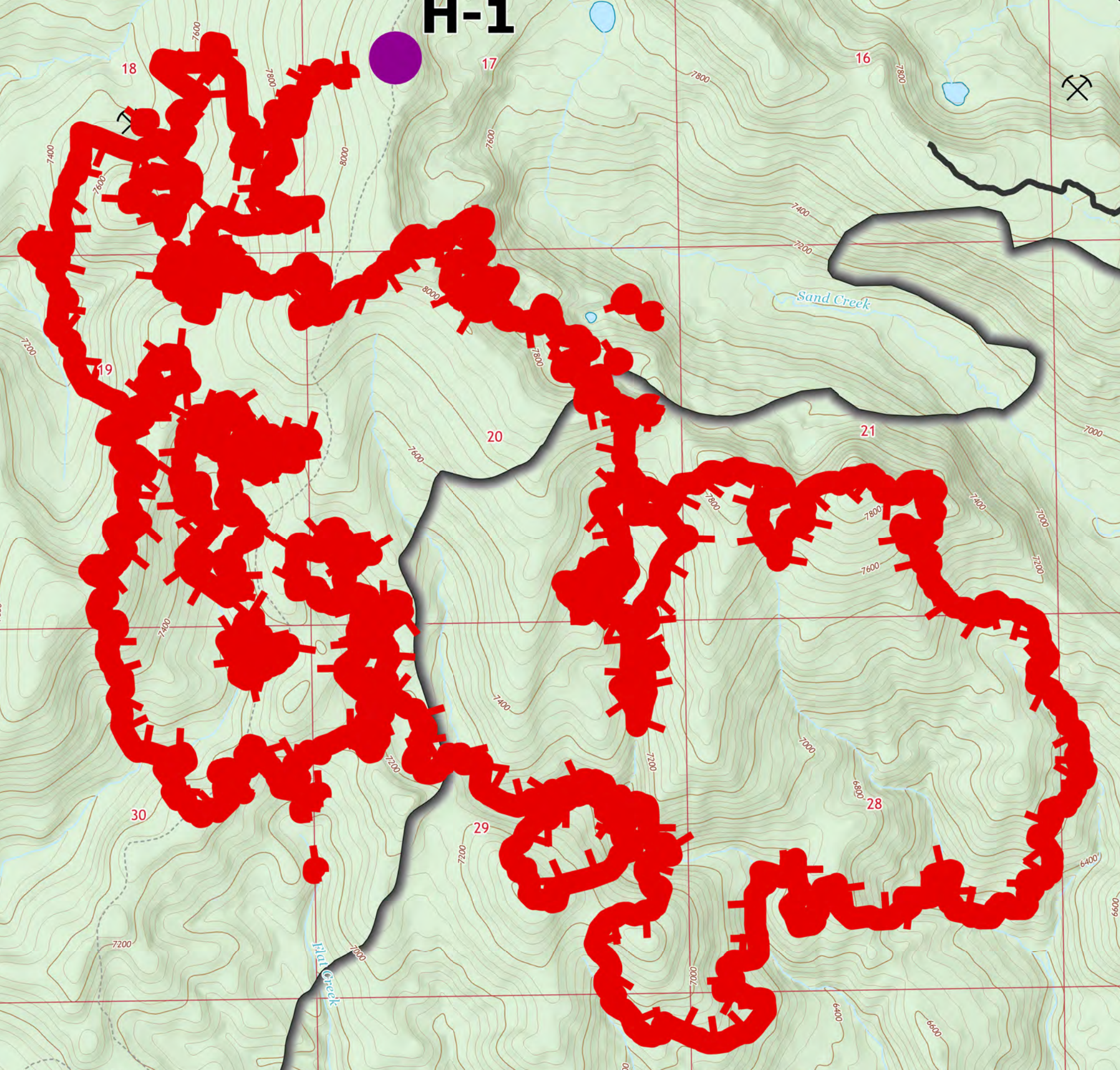
2,003 ACRES AT 2140 HRS ON 9/14



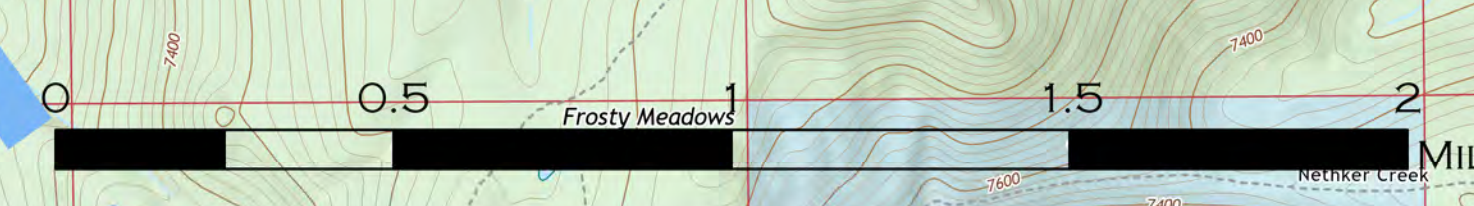
DIV L

DIV A

DIV Z



- ⊗ Mine Prospect
- ⊗ Aerial Hazard
- Helispot
- ⊗ Division Break
- Drop Point
- ⊗ Camp
- ⊗ Fire Station
- ⊗ Mobile Weather Unit
- ⊗ Repeater
- H- Completed Hand Line
- R- Completed Road as Line
- M- Planned Hand Line
- M- Planned Mixed Construction Line
- R- Planned Road as Line
- S- Planned Secondary Line
- ⊗ Temporary Flight Restriction
- Uncontained
- Bureau of Land Management (BLM)
- State
- US Forest Service (USFS)
- Private; Undetermined
- Historic Fire Perimeters
- Forest Service - Admin
- Campground
- Interpretive Site
- LOOKOUT/CABIN
- Basic Custodial Care: 1 (CLOSED)
- High Clearance Vehicles: 2
- Passenger Cars: 3, 4, 5
- Other Road
- Trail
- Structures
- 2019_Sesech_Structures



GB TEAM 4 GISS
9/15/2022 0905
ACRES FROM IIR AND GPS
NORTH AMERICAN 1983 DATUM - LATLONG