

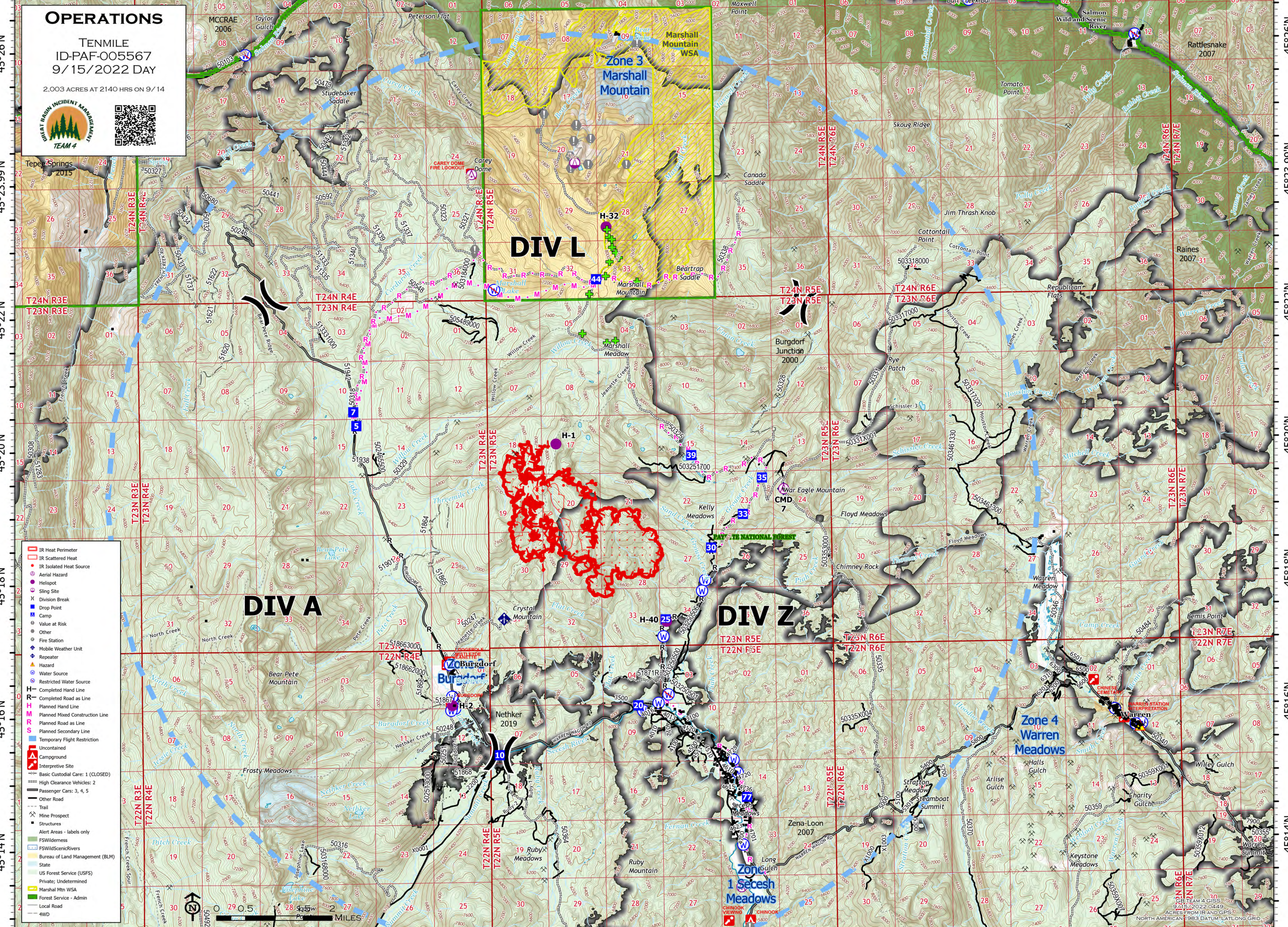
116°2'W 116°W 115°58'W 115°56'W 115°54'W 115°52'W 115°50'W 115°48'W 115°46'W 115°44'W 115°42'W 115°40'W 115°38'W

**OPERATIONS**

TENMILE  
ID-PAF-005567  
9/15/2022 DAY

2,003 ACRES AT 2140 HRS ON 9/14





- ▭ IR Heat Perimeter
- ▭ IR Scattered Heat
- IR Isolated Heat Source
- Aerial Hazard
- Helispot
- Sling Site
- X Division Break
- Drop Point
- Camp
- Value at Risk
- Other
- Fire Station
- Mobile Weather Unit
- Repeater
- ▲ Hazard
- Water Source
- Restricted Water Source
- H Completed Hand Line
- R Completed Road as Line
- H Planned Hand Line
- M Planned Mixed Construction Line
- R Planned Road as Line
- S Planned Secondary Line
- Temporary Flight Restriction
- Uncountained
- Campground
- Interpretive Site
- Basic Custodial Care: 1 (CLOSED)
- High Clearance Vehicles: 2
- Passenger Cars: 3, 4, 5
- Other Road
- Trail
- X Mine Prospect
- Structures
- Alert Areas - labels only
- FSWilderness
- FSWildScenicRivers
- Bureau of Land Management (BLM)
- State
- US Forest Service (USFS)
- Private; Undetermined
- Marshall Mtn WSA
- Forest Service - Admin
- Local Road
- AWD

116°4'W 116°2'W 116°W 115°58'W 115°56'W 115°54'W 115°52'W 115°50'W 115°48'W 115°46'W 115°44'W 115°42'W 115°40'W 115°38'W

45°26'N  
45°23.99'N  
45°22'N  
45°20'N  
45°18'N  
45°16'N  
45°14'N

45°26'N  
45°23.99'N  
45°22'N  
45°20'N  
45°18'N  
45°16'N  
45°14'N

0.5 1 2 3 4 5 6 7 8 9 10 11 12 13 14 15 16 17 18 19 20 21 22 23 24 25 26 27 28 29 30  
MILES

9/23/2022 0449  
2,003 ACRES FROM IFR AND GPS  
NORTH AMERICAN 1983 DATUM: LAT/LONG GRID