

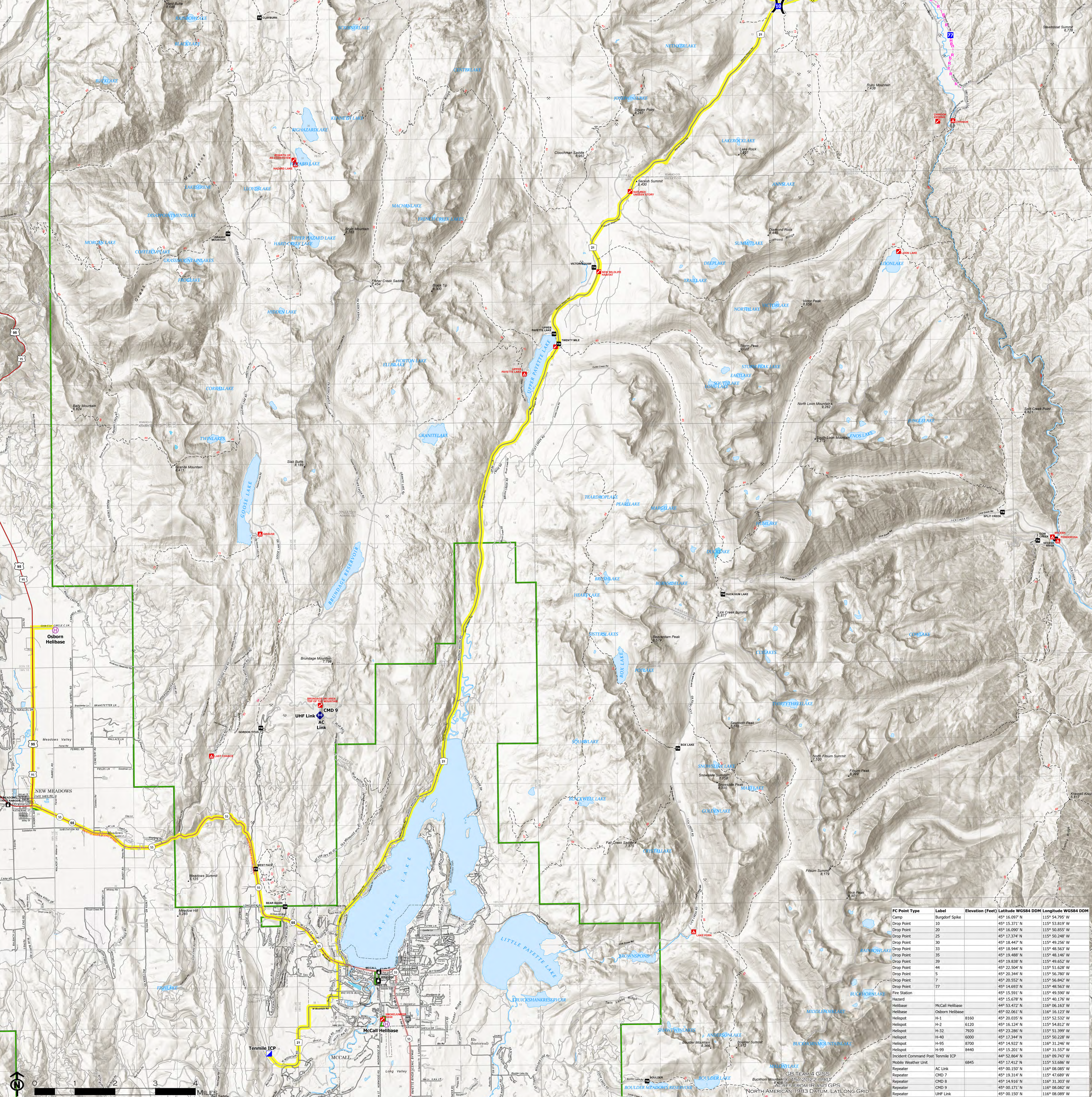
TRANSPORTATION

TENMILE
ID-PAF-005567
9/15/2022 DAY

2.003 ACRES AT 2140 HRS ON 9/14



- Helispot
- Helibase
- ✕ Division Break
- Incident Command Post
- Drop Point
- Camp
- Value at Risk
- Fire Station
- Mobile Weather Unit
- Repeater
- ▭ Wildfire Daily Fire Perimeter
- Completed Hand Line
- Completed Road as Line
- Planned Hand Line
- Planned Mixed Construction Line
- Planned Road as Line
- Planned Secondary Line
- ▭ Uncontaminated
- ✕ Mine Prospect



FC Point Type	Label	Elevation (Feet)	Latitude WGS84 DDM	Longitude WGS84 DDM
Camp	Burgdorf Spike	45° 16.097' N	115° 54.797' W	
Drop Point	10	45° 15.321' N	115° 53.819' W	
Drop Point	20	45° 16.090' N	115° 50.855' W	
Drop Point	25	45° 17.274' N	115° 50.248' W	
Drop Point	30	45° 18.447' N	115° 49.246' W	
Drop Point	33	45° 18.948' N	115° 48.943' W	
Drop Point	35	45° 19.488' N	115° 48.146' W	
Drop Point	39	45° 19.838' N	115° 49.652' W	
Drop Point	44	45° 22.284' N	115° 51.828' W	
Drop Point	5	45° 20.344' N	115° 56.787' W	
Drop Point	7	45° 20.552' N	115° 56.842' W	
Drop Point	77	45° 14.693' N	115° 48.563' W	
Fire Station		45° 15.591' N	115° 49.590' W	
Harshard		45° 15.678' N	115° 40.176' W	
Helibase	McCall Helibase	44° 53.472' N	116° 06.163' W	
Helibase	Osborn Helibase	45° 02.061' N	116° 16.123' W	
Helispot	H-1	45° 20.057' N	115° 52.532' W	
Helispot	H-2	6120	45° 16.124' N	115° 54.812' W
Helispot	H-32	7920	45° 23.286' N	115° 51.399' W
Helispot	H-40	6000	45° 17.344' N	115° 50.228' W
Helispot	H-95	6700	45° 14.927' N	116° 31.246' W
Helispot	H-99	9440	45° 15.201' N	116° 31.557' W
Incident Command Post	Tennile ICP	44° 52.864' N	116° 09.743' W	
Mobile Weather Unit		6845	45° 17.412' N	115° 53.686' W
Repeater	AC Link	45° 20.157' N	116° 08.065' W	
Repeater	CMD 7	45° 19.314' N	115° 47.689' W	
Repeater	CMD 8	45° 14.916' N	116° 31.303' W	
Repeater	CMD 9	45° 00.171' N	116° 08.082' W	
Repeater	UHF Link	45° 20.157' N	116° 08.065' W	
Sling Site		45° 24.254' N	115° 52.046' W	



GTEAM4 GIS
AMERICAN STANDARD MAP PROJECTION
NORTH AMERICAN 1983 DATUM, LAT-LONG GRID