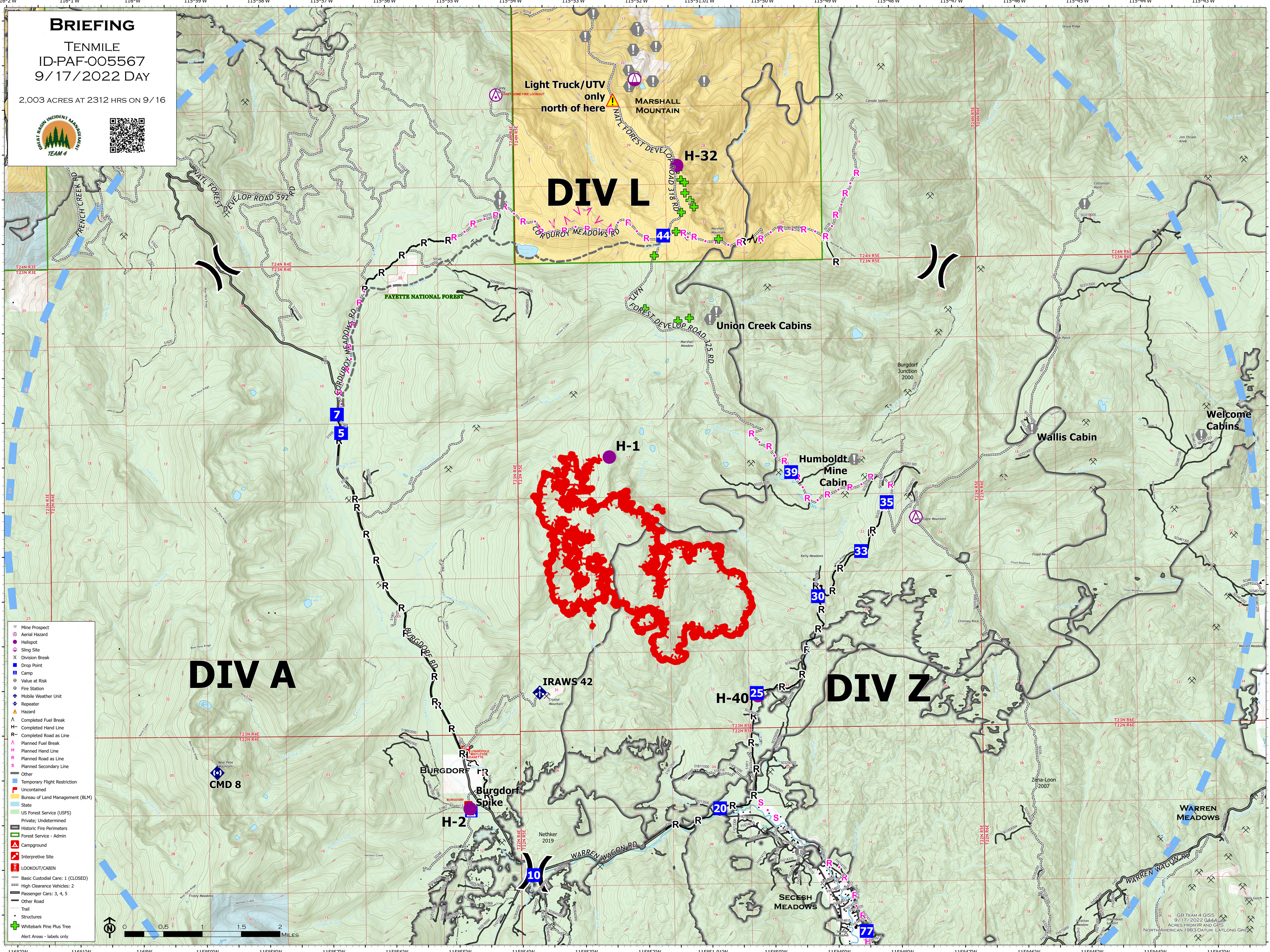


BRIEFING

TENMILE
ID-PAF-005567
9/17/2022 DAY

2,003 ACRES AT 2312 HRS ON 9/16



- Mine Prospect
- Aerial Hazard
- Helispot
- Sling Site
- Division Break
- Drop Point
- Camp
- Value at Risk
- Fire Station
- Mobile Weather Unit
- Repeater
- Hazard
- Completed Fuel Break
- Completed Hand Line
- Completed Road as Line
- Planned Fuel Break
- Planned Hand Line
- Planned Road as Line
- Planned Secondary Line
- Other
- Temporary Flight Restriction
- Uncontained
- Bureau of Land Management (BLM)
- State
- US Forest Service (USFS)
- Private; Undetermined
- Historic Fire Perimeters
- Forest Service - Admin
- Campground
- Interpretive Site
- LOOKOUT/CABIN
- Basic Custodial Care: 1 (CLOSED)
- High Clearance Vehicles: 2
- Passenger Cars: 3, 4, 5
- Other Road
- Trail
- Structures
- Whitebark Pine Plus Tree
- Alert Areas - labels only

DIV A

DIV L

DIV Z

Light Truck/UTV
only
north of here

IRAWS 42

10

H-32

H-1

H-40

Humboldt Mine Cabin

35

33

30

25

20

77

Union Creek Cabins

Wallis Cabin

Welcome Cabins

BURGDOF

Burgdorf Spike

H-2

SECESH MEADOWS

WARREN MEADOWS

CMD 8

0 0.5 1 1.5 2 MILES

16 GB TEAM 4 GISS
9/17/2022 0444Z
ACRES FROM IIR AND GIS
NORTH AMERICAN 1983 DATUM LAT/LONG GRID