

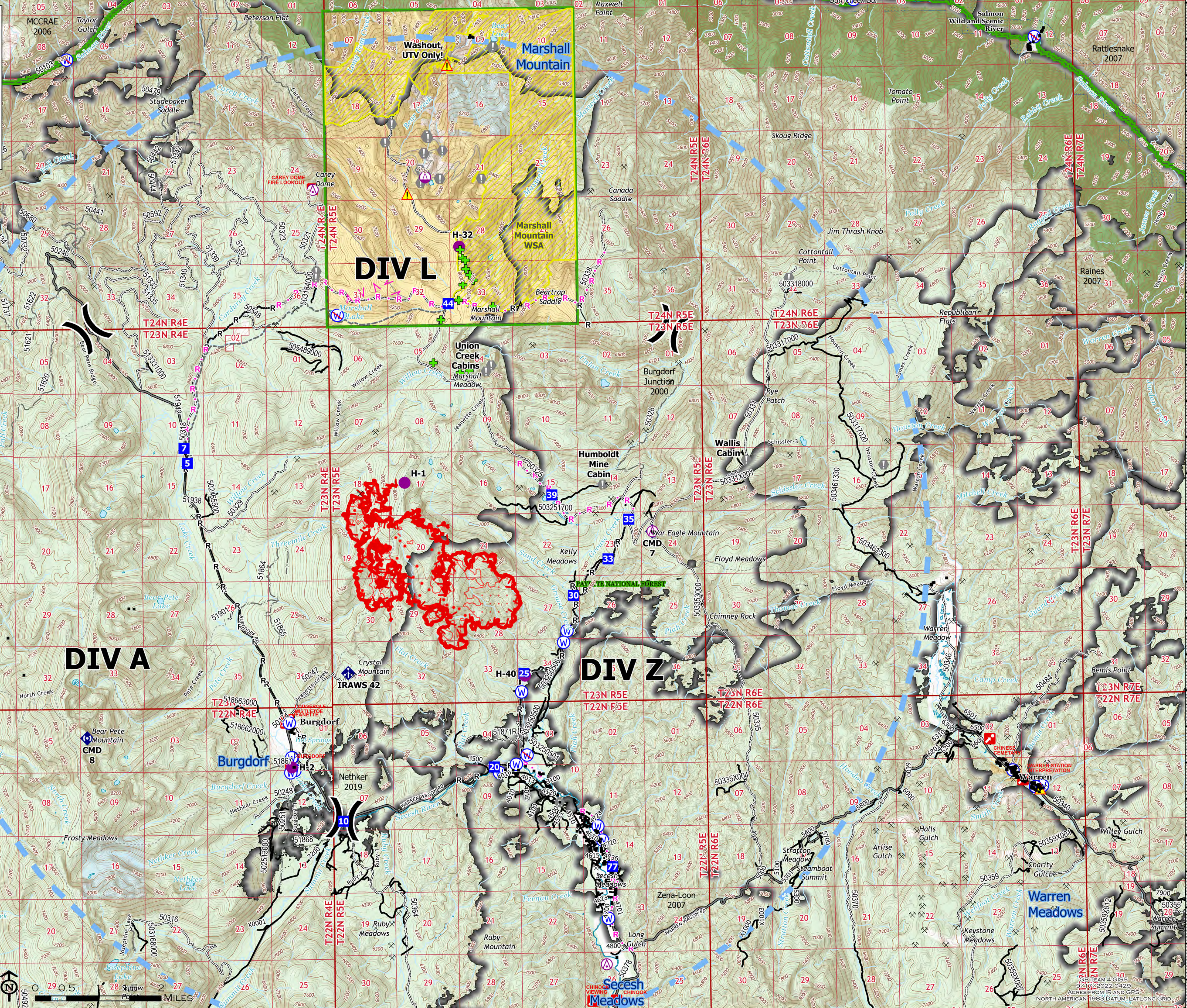
116°2'W 116°W 115°58'W 115°56'W 115°54'W 115°52'W 115°50'W 115°48'W 115°46'W 115°44'W 115°42'W 115°40'W 115°38'W

**OPERATIONS**

TENMILE  
ID-PAF-005567  
9/17/2022 DAY

2,003 ACRES AT 2312 HRS ON 9/16





**DIV L**

**DIV A**

**DIV Z**

**Legend**

- IR Isolated Heat Source
- IR Heat Perimeter
- IR Intense Heat
- IR Scattered Heat
- Aerial Hazard
- Helispot
- Sling Site
- Division Break
- Drop Point
- Camp
- Value at Risk
- Fire Station
- Mobile Weather Unit
- Repeater
- Hazard
- Water Source
- Restricted Water Source
- Completed Fuel Break
- Completed Hand Line
- Planned Fuel Break
- Planned Hand Line
- Planned Road as Line
- Planned Secondary Line
- Other
- Temporary Flight Restriction
- Uncountained
- Campground
- Interpretive Site
- Basic Custodial Care: 1 (CLOSED)
- High Clearance Vehicles: 2
- Passenger Cars: 3, 4, 5
- Other Road
- Trail
- Mine Prospect
- Structures
- Alert Areas - labels only
- FS Wilderness
- FS Wild&Scenic Rivers
- Bureau of Land Management (BLM)
- State
- US Forest Service (USFS)
- Private: Undetermined
- Marshall Mtn WSA
- Forest Service - Admin
- Local Road
- AWD



116°4'W 116°2'W 116°W 115°58'W 115°56'W 115°54'W 115°52'W 115°50'W 115°48'W 115°46'W 115°44'W 115°42'W 115°40'W 115°38'W

45°26'N  
45°23.99'N  
45°22'N  
45°20'N  
45°18'N  
45°16'N  
45°14'N

45°26'N  
45°23.99'N  
45°22'N  
45°20'N  
45°18'N  
45°16'N  
45°14'N

9/27/2022 04:29  
ACRES FROM IFR AND GPS  
NORTH AMERICAN 1983 DATUM: LAT/LONG GRID