

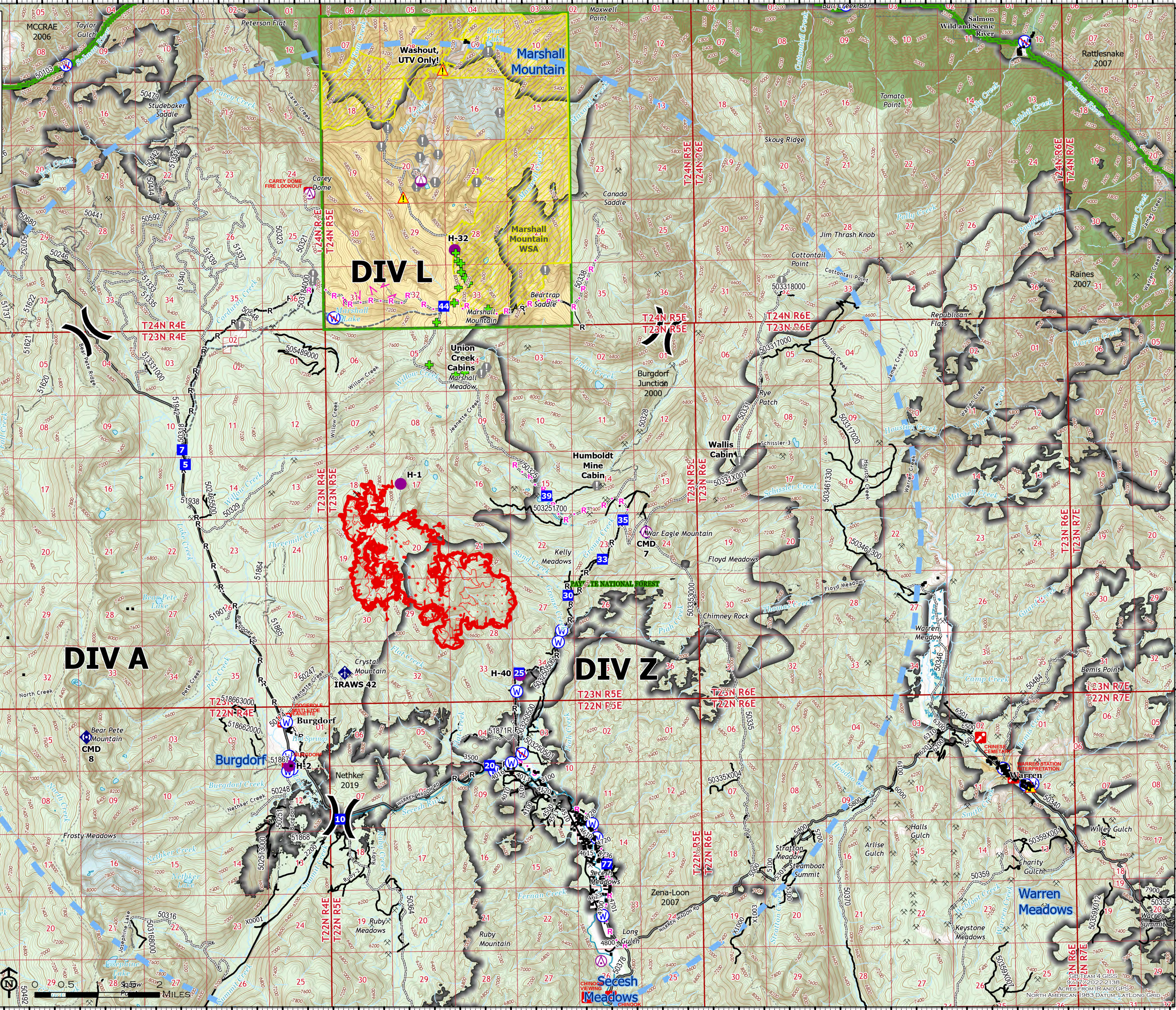
116°2'W 116°W 115°58'W 115°56'W 115°54'W 115°52'W 115°50'W 115°48'W 115°46'W 115°44'W 115°42'W 115°40'W 115°38'W

OPERATIONS

TENMILE
ID-PAF-00567
9/18/2022 DAY

2,003 ACRES AT 2312 HRS ON 9/16





45°26'N
45°23.99'N
45°22'N
45°20'N
45°18'N
45°16'N
45°14'N

45°26'N
45°23.99'N
45°22'N
45°20'N
45°18'N
45°16'N
45°14'N

- IR Isolated Heat Source
- IR Heat Perimeter
- IR Intense Heat
- IR Scattered Heat
- Aerial Hazard
- Heliport
- Sling Site
- Division Break
- Drop Point
- Camp
- Value at Risk
- Fire Station
- Mobile Weather Unit
- Repeater
- Hazard
- Water Source
- Restricted Water Source
- Completed Fuel Break
- Completed Hand Line
- Planned Fuel Break
- Planned Hand Line
- Planned Road as Line
- Planned Secondary Line
- Other
- Temporary Flight Restriction
- Uncountained
- Campground
- Interpretive Site
- Basic Custodial Care: 1 (CLOSED)
- High Clearance Vehicles: 2
- Passenger Cars: 3, 4, 5
- Other Road
- Trail
- Mine Prospect
- Structures
- Alert Areas - labels only
- FS Wilderness
- FS Wild&Scenic Rivers
- Bureau of Land Management (BLM)
- State
- US Forest Service (USFS)
- Private: Undetermined
- Marshall Mtn WSA
- Forest Service - Admin
- Local Road
- AWD

116°4'W 116°2'W 116°W 115°58'W 115°56'W 115°54'W 115°52'W 115°50'W 115°48'W 115°46'W 115°44'W 115°42'W 115°40'W 115°38'W

© TEAM 4 GIS 2022
9/22/2022 2:13P
ACRES FROM IRASD GFS 2
NORTH AMERICAN 1983 DATUM, LAT/LON GRID