

# OPERATIONS

## TENMILE

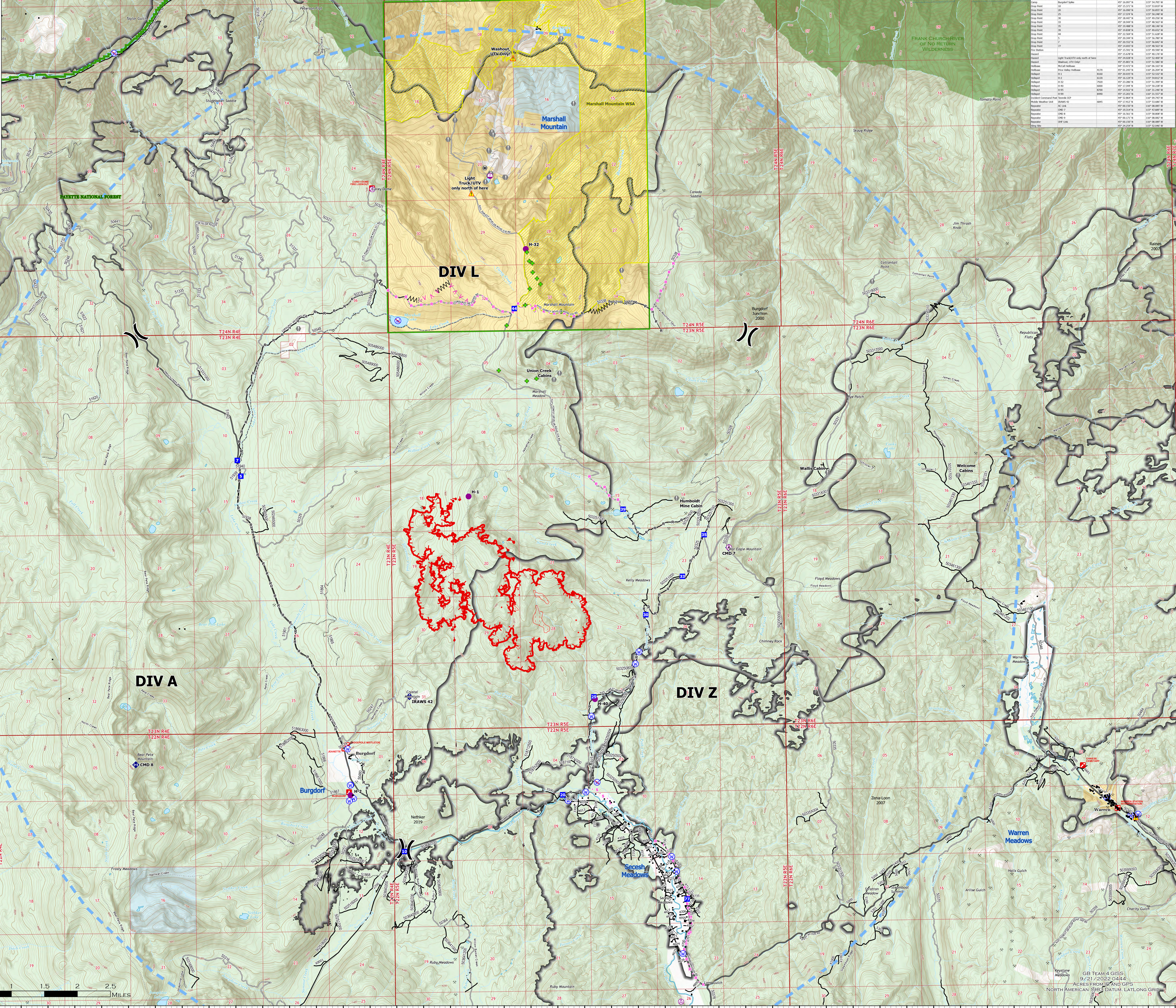
### ID-PAF-005567

### 9/21/2022 DAY

2,024 ACRES AT 2329 HRS ON 9/20



Point Type	Label	Elevation (feet)	North (feet)	East (feet)
IR Isolated Heat Source	H-32	407.15.000	1507.45.000	1507.15.000
Whitebark Pine Plus Tree	H-33	407.15.000	1507.45.000	1507.15.000
Aerial Hazard	H-34	407.15.000	1507.45.000	1507.15.000
Heliport	H-35	407.15.000	1507.45.000	1507.15.000
Sling Site	H-36	407.15.000	1507.45.000	1507.15.000
Division Break	H-37	407.15.000	1507.45.000	1507.15.000
Drop Point	H-38	407.15.000	1507.45.000	1507.15.000
Camp	H-39	407.15.000	1507.45.000	1507.15.000
Value at Risk	H-40	407.15.000	1507.45.000	1507.15.000
Fire Station	H-41	407.15.000	1507.45.000	1507.15.000
Mobile Weather Unit	H-42	407.15.000	1507.45.000	1507.15.000
Repeater	H-43	407.15.000	1507.45.000	1507.15.000
Hazard	H-44	407.15.000	1507.45.000	1507.15.000
Water Source	H-45	407.15.000	1507.45.000	1507.15.000
Restricted Water Source	H-46	407.15.000	1507.45.000	1507.15.000
Completed Fuel Break	H-47	407.15.000	1507.45.000	1507.15.000
Completed Hand Line	H-48	407.15.000	1507.45.000	1507.15.000
Completed Road as Line	H-49	407.15.000	1507.45.000	1507.15.000
Planned Fuel Break	H-50	407.15.000	1507.45.000	1507.15.000
Planned Hand Line	H-51	407.15.000	1507.45.000	1507.15.000
Planned Road as Line	H-52	407.15.000	1507.45.000	1507.15.000
Planned Secondary Line	H-53	407.15.000	1507.45.000	1507.15.000
Other	H-54	407.15.000	1507.45.000	1507.15.000
Temporary Flight Restriction	H-55	407.15.000	1507.45.000	1507.15.000
Uncontained	H-56	407.15.000	1507.45.000	1507.15.000
Basic Custodial Care: 1 (CLOSED)	H-57	407.15.000	1507.45.000	1507.15.000
High Clearance Vehicles: 2	H-58	407.15.000	1507.45.000	1507.15.000
Passenger Cars: 3, 4, 5	H-59	407.15.000	1507.45.000	1507.15.000
Other Road	H-60	407.15.000	1507.45.000	1507.15.000
Trail	H-61	407.15.000	1507.45.000	1507.15.000
Campground	H-62	407.15.000	1507.45.000	1507.15.000
Interpretive Site	H-63	407.15.000	1507.45.000	1507.15.000
Mine Prospect	H-64	407.15.000	1507.45.000	1507.15.000
Structures	H-65	407.15.000	1507.45.000	1507.15.000
FS Wilderness	H-66	407.15.000	1507.45.000	1507.15.000
FS Wild&Scenic Rivers	H-67	407.15.000	1507.45.000	1507.15.000
Bureau of Land Management (BLM)	H-68	407.15.000	1507.45.000	1507.15.000
State	H-69	407.15.000	1507.45.000	1507.15.000
US Forest Service (USFS)	H-70	407.15.000	1507.45.000	1507.15.000
Private; Undetermined	H-71	407.15.000	1507.45.000	1507.15.000
Marshall Mtn WSA	H-72	407.15.000	1507.45.000	1507.15.000
Forest Service - Admin	H-73	407.15.000	1507.45.000	1507.15.000



116°4'W 116°3'W 116°2'W 116°1'W 116°W 115°59'W 115°58'W 115°57'W 115°56'W 115°55'W 115°54'W 115°53'W 115°52'W 115°51.01'W 115°50'W 115°49'W 115°48'W 115°47'W 115°46'W 115°45'W 115°44'W 115°43'W 115°42'W 115°41'W 115°40'W

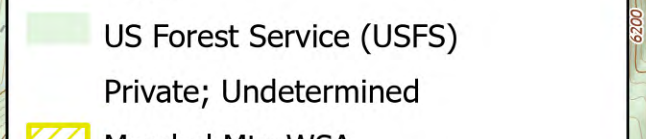
45°13.5N 45°14N 45°14.5N 45°15N 45°15.5N 45°16N 45°16.5N 45°17N 45°17.5N 45°18N 45°18.5N 45°19N 45°19.5N 45°20N 45°20.5N 45°21N 45°21.5N 45°22N 45°22.5N 45°23N 45°23.5N 45°24N 45°24.5N 45°25N 45°25.5N 45°26N

45°13.5N 45°14N 45°14.5N 45°15N 45°15.5N 45°16N 45°16.5N 45°17N 45°17.5N 45°18N 45°18.5N 45°19N 45°19.5N 45°20N 45°20.5N 45°21N 45°21.5N 45°22N 45°22.5N 45°23N 45°23.5N 45°24N 45°24.5N 45°25N 45°25.5N 45°26N



0 0.5 1 1.5 2 2.5  
MILES

- IR Scattered Heat
- IR Isolated Heat Source
- Whitebark Pine Plus Tree
- Aerial Hazard
- Heliport
- Sling Site
- Division Break
- Drop Point
- Camp
- Value at Risk
- Fire Station
- Mobile Weather Unit
- Repeater
- Hazard
- Water Source
- Restricted Water Source
- Completed Fuel Break
- Completed Hand Line
- Completed Road as Line
- Planned Fuel Break
- Planned Hand Line
- Planned Road as Line
- Planned Secondary Line
- Other
- Temporary Flight Restriction
- Uncontained
- Basic Custodial Care: 1 (CLOSED)
- High Clearance Vehicles: 2
- Passenger Cars: 3, 4, 5
- Other Road
- Trail
- Campground
- Interpretive Site
- Mine Prospect
- Structures
- FS Wilderness
- FS Wild&Scenic Rivers
- Bureau of Land Management (BLM)
- State
- US Forest Service (USFS)
- Private; Undetermined
- Marshall Mtn WSA
- Forest Service - Admin



N

GB TEAM 4 GIS  
9/21/2022 0444  
ACRES FROM LIDAR GPS  
NORTH AMERICAN 83 DATUM: LAT/LONG GRID