

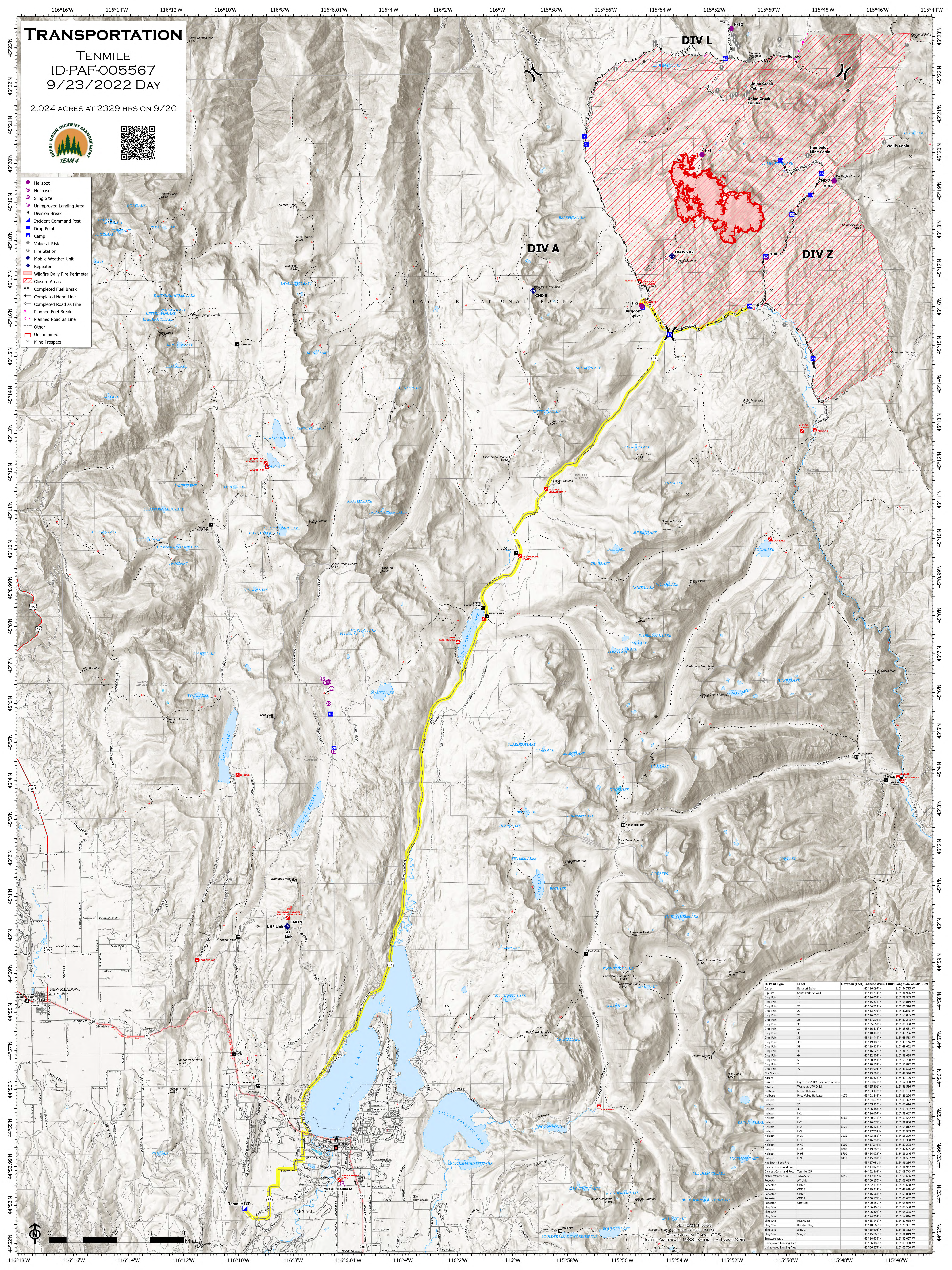
# TRANSPORTATION

TENMILE  
ID-PAF-005567  
9/23/2022 DAY

2,024 ACRES AT 2329 HRS ON 9/20



- Helispot
- Helibase
- Slingsite
- Unimproved Landing Area
- X Division Break
- X Incident Command Post
- Drop Point
- Camp
- Value at Risk
- Fire Station
- Mobile Weather Unit
- Repeater
- Wildfire Daily Fire Perimeter
- Closure Areas
- Completed Fuel Break
- Completed Hand Line
- Planned Fuel Break
- Planned Road as Line
- Other
- Uncontaminated
- Mine Prospect



FC Point Type	Label	Elevation (Feet)	Latitude WGS84 DDM	Longitude WGS84 DDM
Camp	Burgess Spike	45° 16.077 N	115° 54.790 W	
Drop Point	South Fork Helispot	45° 14.556 N	115° 51.937 W	
Drop Point	10	45° 15.071 N	115° 53.853 W	
Drop Point	15	45° 04.510 N	115° 56.310 W	
Drop Point	20	45° 13.798 N	115° 57.820 W	
Drop Point	25	45° 16.007 N	115° 59.460 W	
Drop Point	30	45° 17.314 N	115° 59.248 W	
Drop Point	35	45° 05.632 N	115° 56.650 W	
Drop Point	40	45° 16.017 N	115° 59.460 W	
Drop Point	45	45° 19.488 N	115° 59.460 W	
Drop Point	50	45° 19.838 N	115° 59.460 W	
Drop Point	55	45° 22.504 N	115° 51.628 W	
Drop Point	60	45° 20.344 N	115° 56.790 W	
Drop Point	65	45° 20.552 N	115° 56.460 W	
Drop Point	70	45° 14.667 N	115° 48.567 W	
Drop Point	75	45° 15.991 N	115° 49.990 W	
Drop Point	80	45° 15.991 N	115° 49.990 W	
Drop Point	85	45° 01.247 N	115° 52.400 W	
Drop Point	90	45° 04.437 N	115° 51.780 W	
Drop Point	95	44° 53.472 N	115° 56.167 W	
Drop Point	100	45° 05.926 N	115° 56.494 W	
Drop Point	105	45° 06.407 N	115° 56.494 W	
Drop Point	110	45° 14.607 N	115° 51.628 W	
Drop Point	115	45° 20.317 N	115° 53.537 W	
Drop Point	120	45° 16.007 N	115° 59.460 W	
Drop Point	125	45° 16.124 N	115° 54.852 W	
Drop Point	130	45° 17.268 N	115° 59.967 W	
Drop Point	135	45° 18.304 N	115° 59.967 W	
Drop Point	140	45° 16.708 N	115° 33.330 W	
Drop Point	145	45° 17.344 N	115° 50.228 W	
Drop Point	150	45° 16.007 N	115° 59.460 W	
Drop Point	155	45° 14.922 N	115° 31.240 W	
Drop Point	160	45° 15.001 N	115° 51.947 W	
Drop Point	165	45° 17.017 N	115° 51.947 W	
Drop Point	170	45° 17.412 N	115° 53.680 W	
Drop Point	175	45° 05.157 N	115° 58.890 W	
Drop Point	180	45° 22.117 N	115° 47.689 W	
Drop Point	185	45° 19.314 N	115° 47.689 W	
Drop Point	190	45° 16.561 N	115° 58.890 W	
Drop Point	195	45° 00.011 N	115° 50.228 W	
Drop Point	200	45° 00.157 N	115° 08.089 W	
Drop Point	205	45° 06.407 N	115° 56.494 W	
Drop Point	210	45° 06.407 N	115° 56.494 W	
Drop Point	215	45° 24.254 N	115° 52.040 W	
Drop Point	220	45° 18.146 N	115° 30.350 W	
Drop Point	225	45° 18.560 N	115° 29.381 W	
Drop Point	230	45° 18.560 N	115° 29.381 W	
Drop Point	235	45° 18.560 N	115° 29.381 W	
Drop Point	240	45° 18.560 N	115° 29.381 W	
Drop Point	245	45° 18.560 N	115° 29.381 W	
Drop Point	250	45° 18.560 N	115° 29.381 W	
Drop Point	255	45° 18.560 N	115° 29.381 W	
Drop Point	260	45° 18.560 N	115° 29.381 W	
Drop Point	265	45° 18.560 N	115° 29.381 W	
Drop Point	270	45° 18.560 N	115° 29.381 W	
Drop Point	275	45° 18.560 N	115° 29.381 W	
Drop Point	280	45° 18.560 N	115° 29.381 W	
Drop Point	285	45° 18.560 N	115° 29.381 W	
Drop Point	290	45° 18.560 N	115° 29.381 W	
Drop Point	295	45° 18.560 N	115° 29.381 W	
Drop Point	300	45° 18.560 N	115° 29.381 W	

