

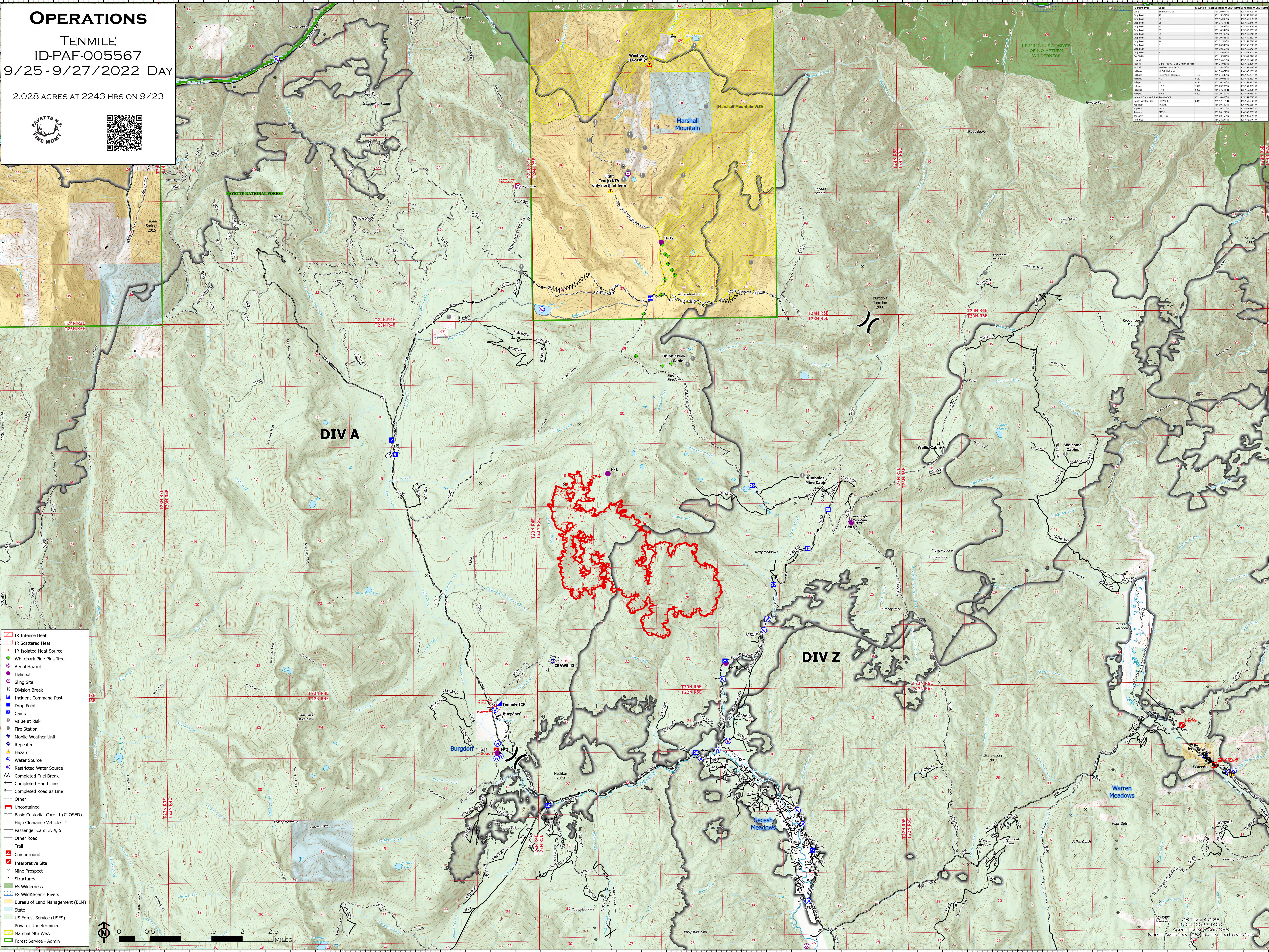
# OPERATIONS

TENMILE  
ID-PAF-005567  
9/25 - 9/27/2022 DAY

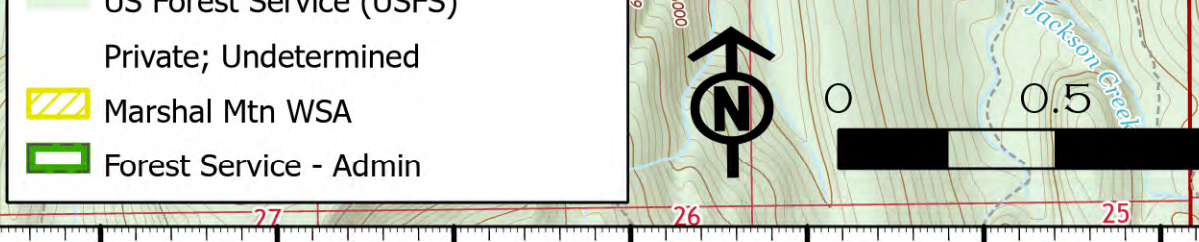
2,028 ACRES AT 2243 HRS ON 9/23



Point Type	Label	Elevation (feet)	Contour Interval (feet)	Longitude (degrees West)	Latitude (degrees North)
Spot Height	507	15,267.76	100	115°49'00.00"	45°26'00.00"
Spot Height	508	15,268.00	100	115°49'00.00"	45°26'00.00"
Spot Height	509	15,268.24	100	115°49'00.00"	45°26'00.00"
Spot Height	510	15,268.48	100	115°49'00.00"	45°26'00.00"
Spot Height	511	15,268.72	100	115°49'00.00"	45°26'00.00"
Spot Height	512	15,268.96	100	115°49'00.00"	45°26'00.00"
Spot Height	513	15,269.20	100	115°49'00.00"	45°26'00.00"
Spot Height	514	15,269.44	100	115°49'00.00"	45°26'00.00"
Spot Height	515	15,269.68	100	115°49'00.00"	45°26'00.00"
Spot Height	516	15,269.92	100	115°49'00.00"	45°26'00.00"
Spot Height	517	15,270.16	100	115°49'00.00"	45°26'00.00"
Spot Height	518	15,270.40	100	115°49'00.00"	45°26'00.00"
Spot Height	519	15,270.64	100	115°49'00.00"	45°26'00.00"
Spot Height	520	15,270.88	100	115°49'00.00"	45°26'00.00"
Spot Height	521	15,271.12	100	115°49'00.00"	45°26'00.00"
Spot Height	522	15,271.36	100	115°49'00.00"	45°26'00.00"
Spot Height	523	15,271.60	100	115°49'00.00"	45°26'00.00"
Spot Height	524	15,271.84	100	115°49'00.00"	45°26'00.00"
Spot Height	525	15,272.08	100	115°49'00.00"	45°26'00.00"
Spot Height	526	15,272.32	100	115°49'00.00"	45°26'00.00"
Spot Height	527	15,272.56	100	115°49'00.00"	45°26'00.00"
Spot Height	528	15,272.80	100	115°49'00.00"	45°26'00.00"
Spot Height	529	15,273.04	100	115°49'00.00"	45°26'00.00"
Spot Height	530	15,273.28	100	115°49'00.00"	45°26'00.00"
Spot Height	531	15,273.52	100	115°49'00.00"	45°26'00.00"
Spot Height	532	15,273.76	100	115°49'00.00"	45°26'00.00"
Spot Height	533	15,274.00	100	115°49'00.00"	45°26'00.00"
Spot Height	534	15,274.24	100	115°49'00.00"	45°26'00.00"
Spot Height	535	15,274.48	100	115°49'00.00"	45°26'00.00"
Spot Height	536	15,274.72	100	115°49'00.00"	45°26'00.00"
Spot Height	537	15,274.96	100	115°49'00.00"	45°26'00.00"
Spot Height	538	15,275.20	100	115°49'00.00"	45°26'00.00"
Spot Height	539	15,275.44	100	115°49'00.00"	45°26'00.00"
Spot Height	540	15,275.68	100	115°49'00.00"	45°26'00.00"
Spot Height	541	15,275.92	100	115°49'00.00"	45°26'00.00"
Spot Height	542	15,276.16	100	115°49'00.00"	45°26'00.00"
Spot Height	543	15,276.40	100	115°49'00.00"	45°26'00.00"
Spot Height	544	15,276.64	100	115°49'00.00"	45°26'00.00"
Spot Height	545	15,276.88	100	115°49'00.00"	45°26'00.00"
Spot Height	546	15,277.12	100	115°49'00.00"	45°26'00.00"
Spot Height	547	15,277.36	100	115°49'00.00"	45°26'00.00"
Spot Height	548	15,277.60	100	115°49'00.00"	45°26'00.00"
Spot Height	549	15,277.84	100	115°49'00.00"	45°26'00.00"
Spot Height	550	15,278.08	100	115°49'00.00"	45°26'00.00"
Spot Height	551	15,278.32	100	115°49'00.00"	45°26'00.00"
Spot Height	552	15,278.56	100	115°49'00.00"	45°26'00.00"
Spot Height	553	15,278.80	100	115°49'00.00"	45°26'00.00"
Spot Height	554	15,279.04	100	115°49'00.00"	45°26'00.00"
Spot Height	555	15,279.28	100	115°49'00.00"	45°26'00.00"
Spot Height	556	15,279.52	100	115°49'00.00"	45°26'00.00"
Spot Height	557	15,279.76	100	115°49'00.00"	45°26'00.00"
Spot Height	558	15,280.00	100	115°49'00.00"	45°26'00.00"
Spot Height	559	15,280.24	100	115°49'00.00"	45°26'00.00"
Spot Height	560	15,280.48	100	115°49'00.00"	45°26'00.00"
Spot Height	561	15,280.72	100	115°49'00.00"	45°26'00.00"
Spot Height	562	15,280.96	100	115°49'00.00"	45°26'00.00"
Spot Height	563	15,281.20	100	115°49'00.00"	45°26'00.00"
Spot Height	564	15,281.44	100	115°49'00.00"	45°26'00.00"
Spot Height	565	15,281.68	100	115°49'00.00"	45°26'00.00"
Spot Height	566	15,281.92	100	115°49'00.00"	45°26'00.00"
Spot Height	567	15,282.16	100	115°49'00.00"	45°26'00.00"
Spot Height	568	15,282.40	100	115°49'00.00"	45°26'00.00"
Spot Height	569	15,282.64	100	115°49'00.00"	45°26'00.00"
Spot Height	570	15,282.88	100	115°49'00.00"	45°26'00.00"
Spot Height	571	15,283.12	100	115°49'00.00"	45°26'00.00"
Spot Height	572	15,283.36	100	115°49'00.00"	45°26'00.00"
Spot Height	573	15,283.60	100	115°49'00.00"	45°26'00.00"
Spot Height	574	15,283.84	100	115°49'00.00"	45°26'00.00"
Spot Height	575	15,284.08	100	115°49'00.00"	45°26'00.00"
Spot Height	576	15,284.32	100	115°49'00.00"	45°26'00.00"
Spot Height	577	15,284.56	100	115°49'00.00"	45°26'00.00"
Spot Height	578	15,284.80	100	115°49'00.00"	45°26'00.00"
Spot Height	579	15,285.04	100	115°49'00.00"	45°26'00.00"
Spot Height	580	15,285.28	100	115°49'00.00"	45°26'00.00"
Spot Height	581	15,285.52	100	115°49'00.00"	45°26'00.00"
Spot Height	582	15,285.76	100	115°49'00.00"	45°26'00.00"
Spot Height	583	15,286.00	100	115°49'00.00"	45°26'00.00"
Spot Height	584	15,286.24	100	115°49'00.00"	45°26'00.00"
Spot Height	585	15,286.48	100	115°49'00.00"	45°26'00.00"
Spot Height	586	15,286.72	100	115°49'00.00"	45°26'00.00"
Spot Height	587	15,286.96	100	115°49'00.00"	45°26'00.00"
Spot Height	588	15,287.20	100	115°49'00.00"	45°26'00.00"
Spot Height	589	15,287.44	100	115°49'00.00"	45°26'00.00"
Spot Height	590	15,287.68	100	115°49'00.00"	45°26'00.00"
Spot Height	591	15,287.92	100	115°49'00.00"	45°26'00.00"
Spot Height	592	15,288.16	100	115°49'00.00"	45°26'00.00"
Spot Height	593	15,288.40	100	115°49'00.00"	45°26'00.00"
Spot Height	594	15,288.64	100	115°49'00.00"	45°26'00.00"
Spot Height	595	15,288.88	100	115°49'00.00"	45°26'00.00"
Spot Height	596	15,289.12	100	115°49'00.00"	45°26'00.00"
Spot Height	597	15,289.36	100	115°49'00.00"	45°26'00.00"
Spot Height	598	15,289.60	100	115°49'00.00"	45°26'00.00"
Spot Height	599	15,289.84	100	115°49'00.00"	45°26'00.00"
Spot Height	600	15,290.08	100	115°49'00.00"	45°26'00.00"



- IR Intense Heat
- IR Scattered Heat
- IR Isolated Heat Source
- Whitebark Pine Plus Tree
- Aerial Hazard
- Helispot
- Sling Site
- Division Break
- Incident Command Post
- Drop Point
- Camp
- Value at Risk
- Fire Station
- Mobile Weather Unit
- Repeater
- Hazard
- Water Source
- Restricted Water Source
- Completed Fuel Break
- Completed Hand Line
- Completed Road as Line
- Other
- Uncontained
- Basic Custodial Care: 1 (CLOSED)
- High Clearance Vehicles: 2
- Passenger Cars: 3, 4, 5
- Other Road
- Trail
- Campground
- Interpretive Site
- Mine Prospect
- Structures
- FS Wilderness
- FS Wild&Scenic Rivers
- Bureau of Land Management (BLM)
- State
- US Forest Service (USFS)
- Private; Undetermined
- Marshall Mtn WSA
- Forest Service - Admin



GB TEAM 4 GIS  
9/24/2022 1420  
ACRES FROM LAND GPS  
NORTH AMERICAN 1983 DATUM - LAT/LONG GRID