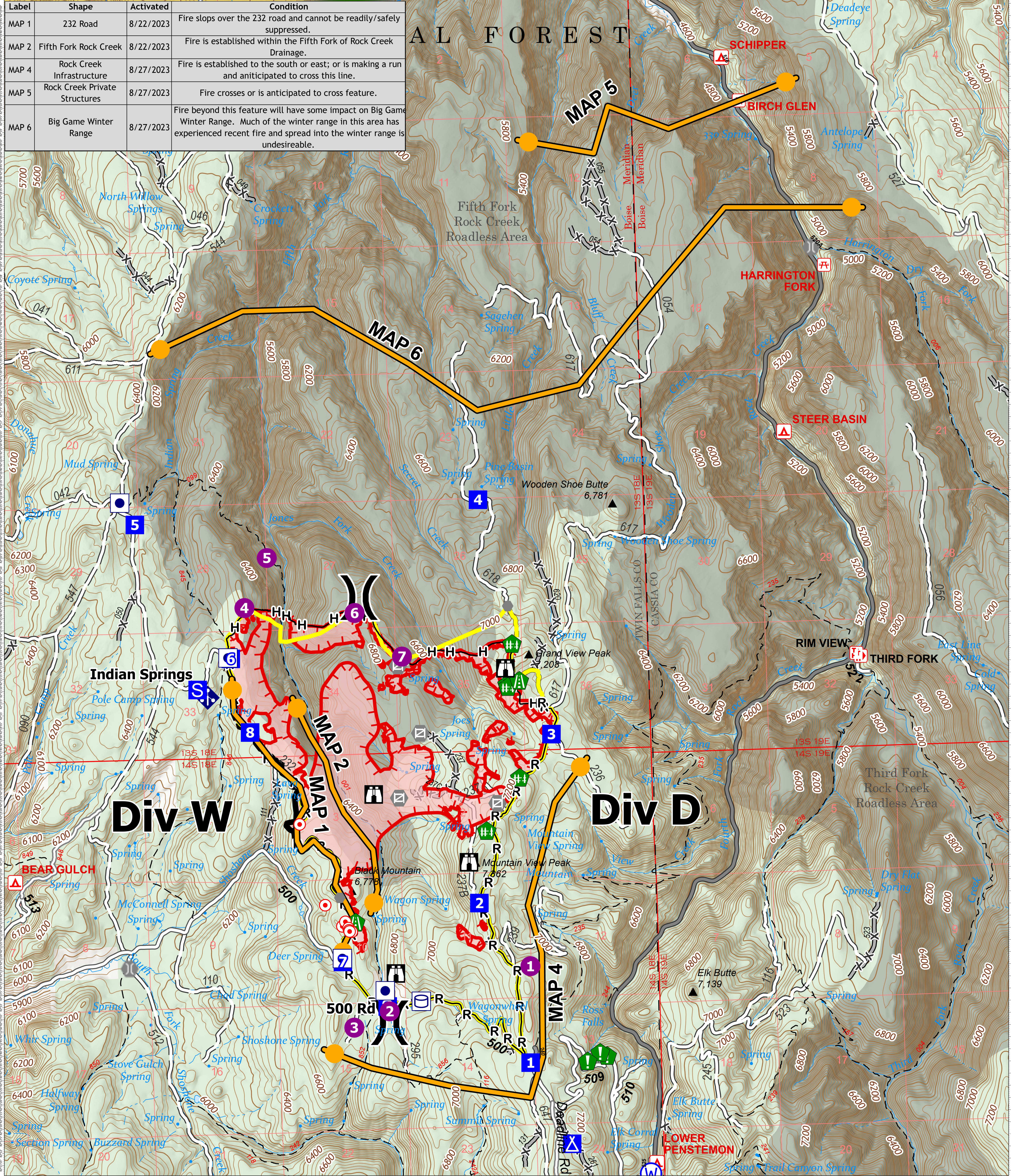
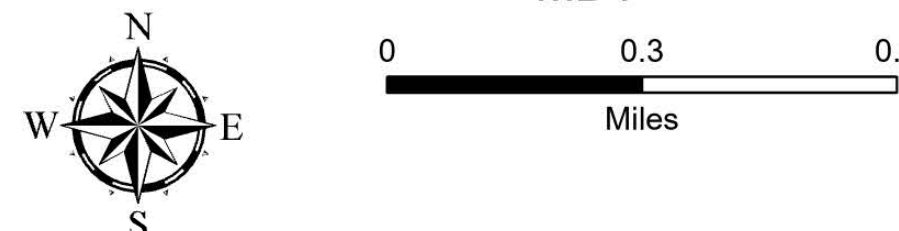


Label	Shape	Activated	Condition
MAP 1	232 Road	8/22/2023	Fire stops over the 232 road and cannot be readily/safely suppressed.
MAP 2	Fifth Fork Rock Creek	8/22/2023	Fire is established within the Fifth Fork of Rock Creek Drainage.
MAP 4	Rock Creek Infrastructure	8/27/2023	Fire is established to the south or east; or is making a run and anticipated to cross this line.
MAP 5	Rock Creek Private Structures	8/27/2023	Fire crosses or is anticipated to cross feature.
MAP 6	Big Game Winter Range	8/27/2023	Fire beyond this feature will have some impact on Big Game Winter Range. Much of the winter range in this area has experienced recent fire and spread into the winter range is undesirable.



Planning
 Black Mountain
 ID-STF-000212
 1,218 acres
 09/24/2023
 Fire perimeter updated from IR & GPS on 9/18/2023 15:00 MDT



Scale: 1:14,326

- Planning Area
- Wildfire Daily Fire Perimeter
- Contained
- Uncontained
- Structure
- Helispot
- Division Break
- Drop Point
- Camp
- Staging Area
- Lookout
- Hot Spot - Spot Fire
- Other
- Gate
- Water Development or Draft Site
- Road Repair
- Resource Location
- Fence - Cut/Damaged
- Mobile Weather Unit
- Water Source
- Completed Hand Line
- Completed Road as Line
- Management Action Point
- Paved
- Gravel Road
- Dirt Road
- Unimproved Road
- Forest Service Roads Closed
- USFS Roadless Areas
- Forest Service Land
- Bureau of Land Management Lands

