

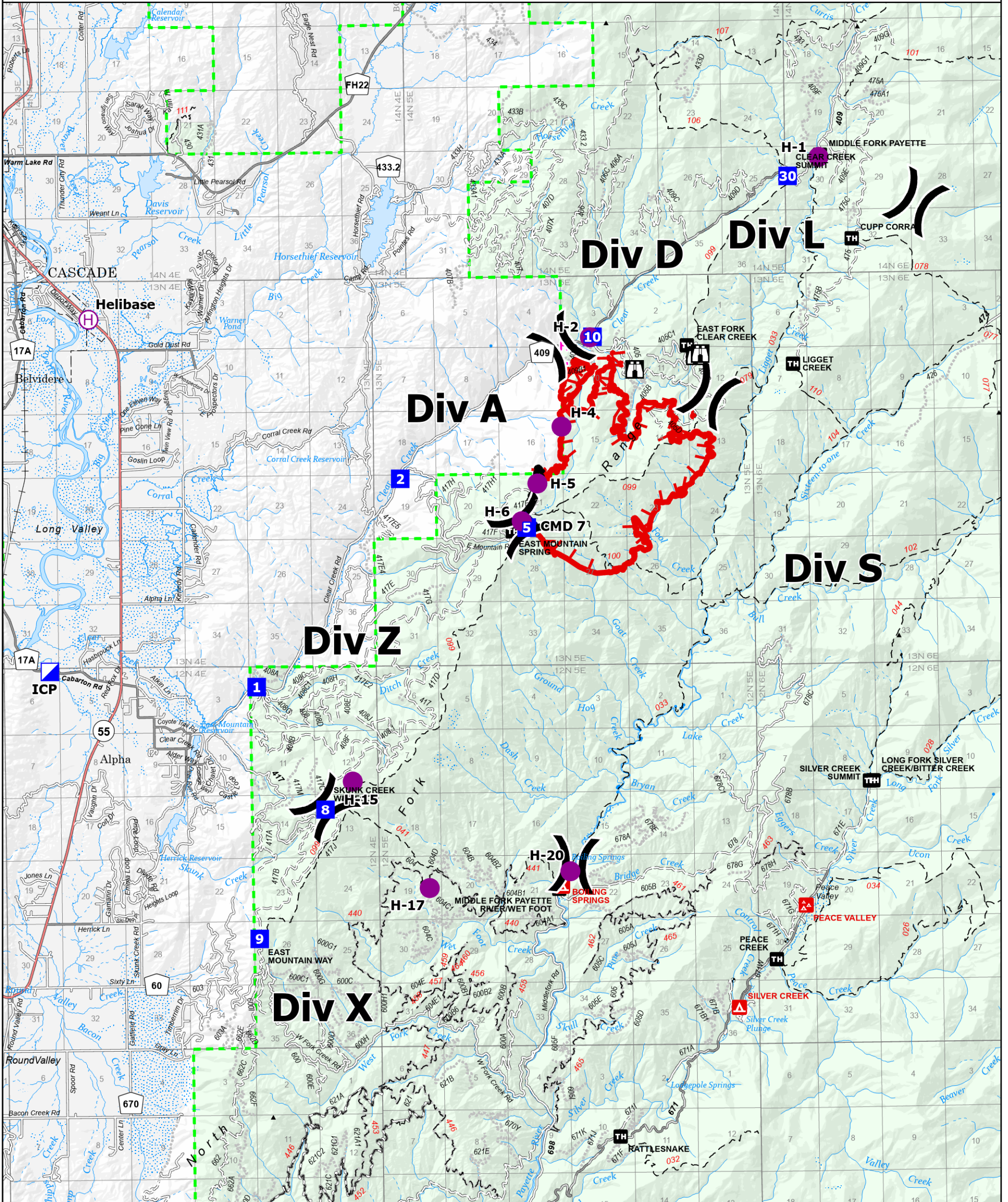
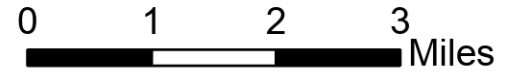
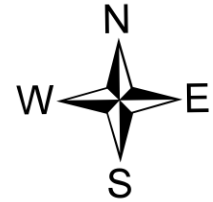


IAP

East

ID-BOF-000740

3,342 acres at 8/24/2022 00:44



■ Contained Perimeter	■ Drop Point	■ Trailhead	— Gravel Road	— Stream / River	□ Incorporated Place
▬ Uncontained Perimeter	▣ Lookout	— Trail	— Dirt Roads	— Stream/River; Artificial Path	□ Lake / Pond
● Helispot	◆ Repeater	— Secondary Highway	— Unimproved Roads	— Canal / Ditch	▣ Lake / Pond (Intermittent)
⊕ Helibase	⊕ Planned Hand Line	— Paved Roads	— Closed Roads	— Stream/River Intermittent	▣ Reservoir
× Division Break	▣ Campground	— Dirt (Not Paved)	— Railroad	— Administrative FS Boundary	▣ Forest Service Land
▣ Incident Command Post	▣ Group Campground	— Paved Road	□ Runway	— County Boundary	