

Pilot Map

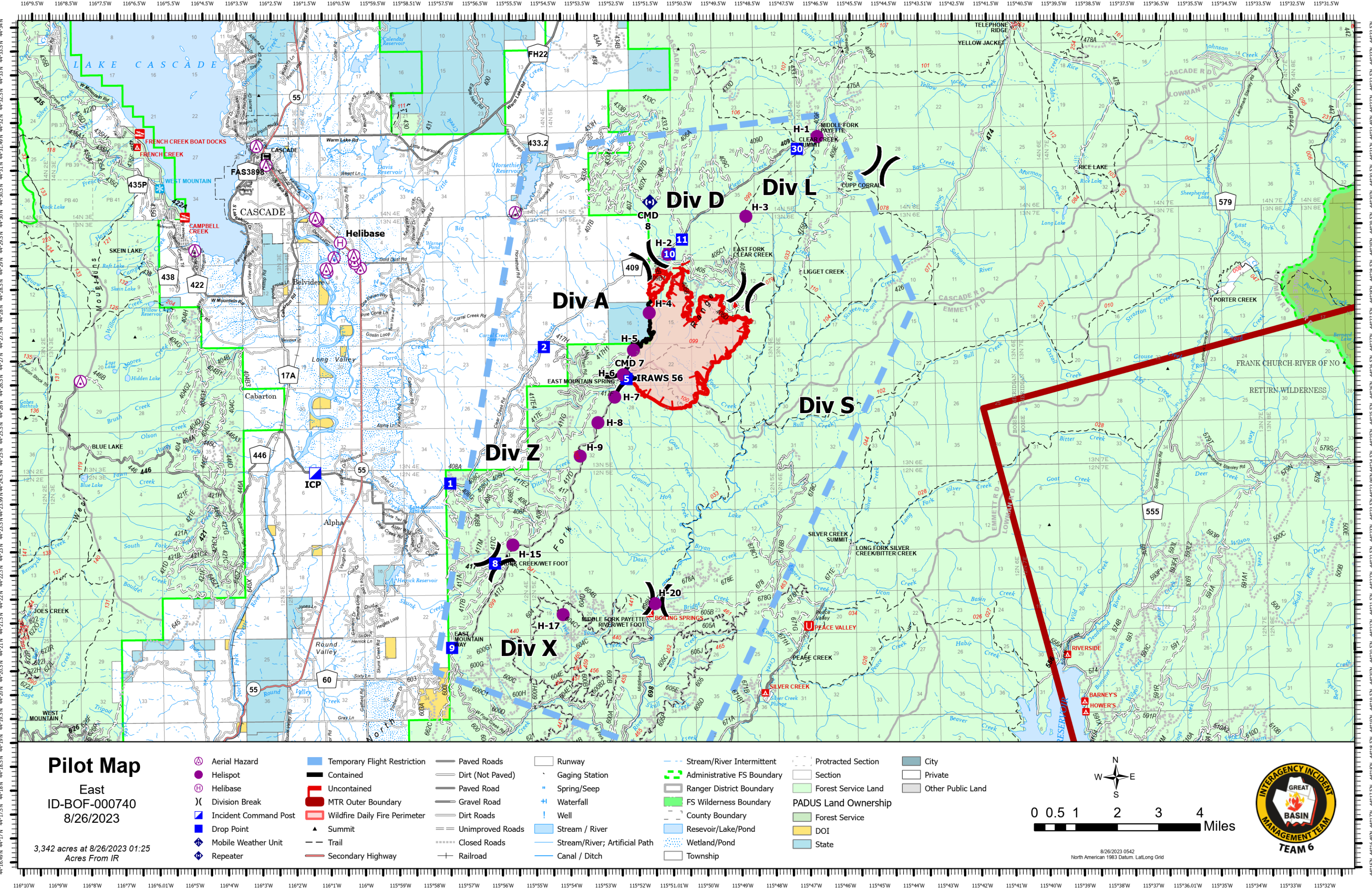
East
ID-BOF-000740
8/26/2023

3,342 acres at 8/26/2023 01:25
Acres From IR

- | | | | | | | |
|---|---|--|--|---|--|---|
| <ul style="list-style-type: none"> Aerial Hazard Helispot Helibase Division Break Incident Command Post Drop Point Mobile Weather Unit Repeater | <ul style="list-style-type: none"> Temporary Flight Restriction Uncontained MTR Outer Boundary Wildfire Daily Fire Perimeter Summit Trail Secondary Highway | <ul style="list-style-type: none"> Paved Roads Dirt (Not Paved) Paved Road Gravel Road Dirt Roads Unimproved Roads Closed Roads Railroad | <ul style="list-style-type: none"> Runway Gaging Station Spring/Seep Waterfall Well Stream / River Stream/River; Artificial Path Canal / Ditch | <ul style="list-style-type: none"> Stream/River Intermittent Administrative FS Boundary Ranger District Boundary FS Wilderness Boundary County Boundary Reservoir/Lake/Pond Wetland/Pond Township | <ul style="list-style-type: none"> Protracted Section Section Forest Service Land Forest Service DOI State | <ul style="list-style-type: none"> City Private Other Public Land |
|---|---|--|--|---|--|---|

0 0.5 1 2 3 4 Miles

8/26/2023 0542
North American 1983 Datum, Lat,Long Grid



FC Point Type	Label	Comments	Elevation (Feet)	Latitude WGS84 DDM	Longitude WGS84 DDM
Repeater	CMD 7			44° 26.542' N	115° 52.212' W
Repeater	CMD 8			44° 30.181' N	115° 51.439' W
Incident Command Post	ICP			44° 24.587' N	116° 01.351' W
Helispot	H-2	Type 2 & 3. Dust abatement recommended.	5400	44° 29.080' N	115° 50.933' W
Helispot	H-6	Type 2 & 3	7650	44° 26.570' N	115° 52.289' W
Helispot	H-4	Type 2 & 3	7150	44° 27.860' N	115° 51.501' W
Helispot	H-20	Type 2 & 3		44° 21.754' N	115° 51.450' W
Helispot	H-17	Type 3		44° 21.550' N	115° 54.141' W
Helispot	H-5	Few small trees need cleared. Rigs will have to move if used.		44° 27.085' N	115° 51.978' W
Helispot	H-15	Type 2 & 3		44° 23.032' N	115° 55.586' W
Helispot	H-1	Type 2 & 3		44° 31.508' N	115° 46.505' W
Helispot	H-3	Good		44° 29.855' N	115° 48.628' W
Helispot	H-7	Good h-7		44° 26.104' N	115° 52.546' W
Helispot	H-8	Type 2		44° 25.573' N	115° 53.048' W
Helispot	H-9	Type 3		44° 24.877' N	115° 53.581' W
Helibase	Helibase			44° 29.410' N	116° 00.531' W
Drop Point	8			44° 22.649' N	115° 56.114' W
Drop Point	2			44° 27.174' N	115° 54.602' W
Drop Point	5			44° 26.482' N	115° 52.194' W
Drop Point	9			44° 20.883' N	115° 57.403' W
Drop Point	10	DP10		44° 29.087' N	115° 50.884' W
Drop Point	30			44° 31.253' N	115° 47.101' W
Drop Point	1			44° 24.338' N	115° 57.395' W
Drop Point	11			44° 29.388' N	115° 50.511' W